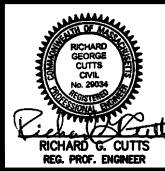


**LOT A**  
 AREA=1,045,535± S.F.  
 (24.00± ACRES)

DATE	BY	REV#	REVISIONS
3/18/2022	RGC	▲	ISSUED FOR PLANNING BOARD
2/15/2022	RGC	▲	ISSUED FOR PERMITTING

CALC. BY:	WAJ
DR. BY:	WAJ
CKD. BY:	RGC/WAJ
APPD. BY:	RGC
JOB NO.:	21055
SCALE:	1" = 40'
DATE:	FEB. 15, 2022



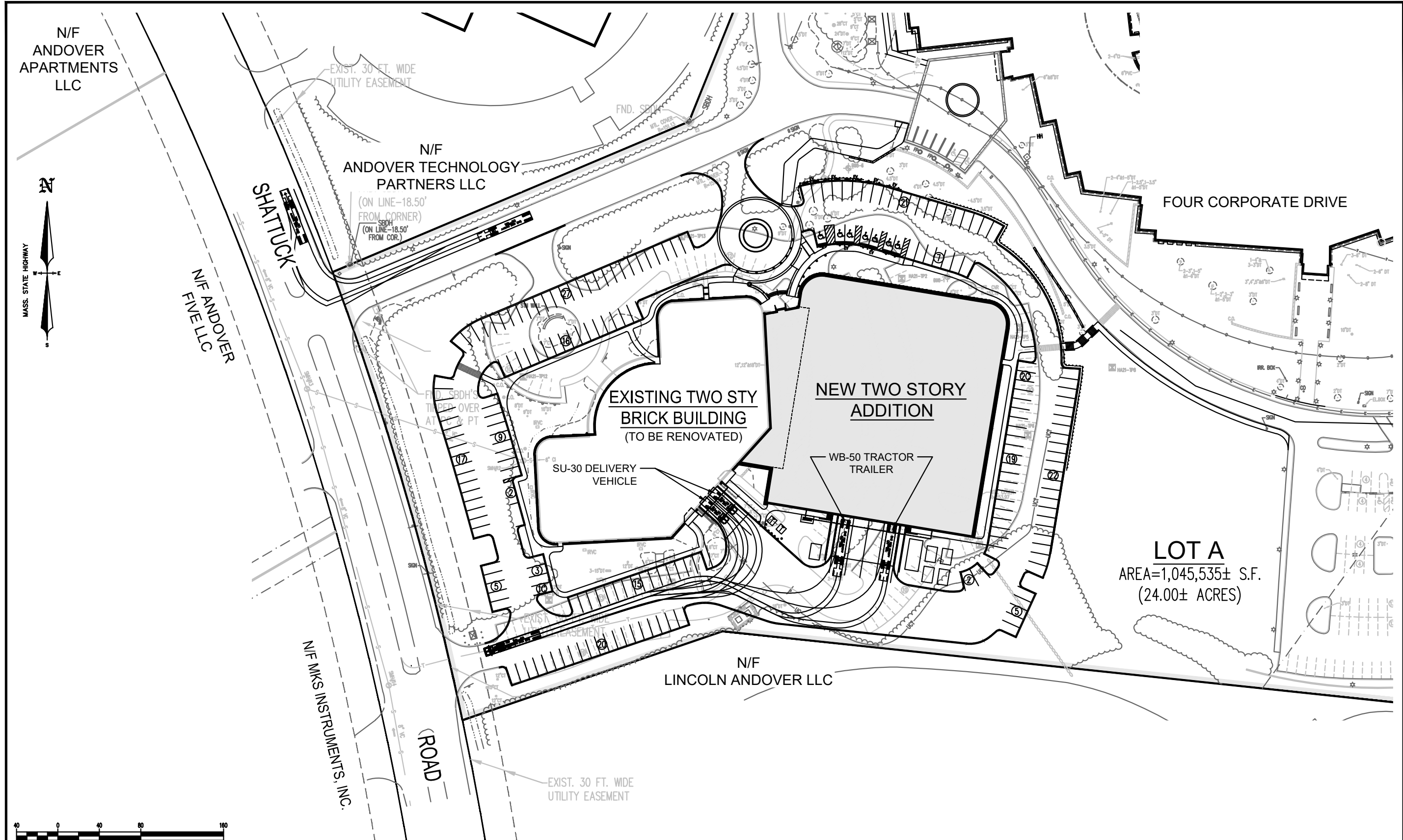
**OLINDEN ENGINEERING PARTNERS LLC**  
 100 TradeCenter Suite G700  
 Woburn, MA 01801-1851  
 Tel: (781) 933-3711  
 Fax: (781) 287-1277

Civil - Environmental Engineering including Storm water, Wastewater, Water Supply, Highway & Infrastructure Design, Land Planning, Land Subdivision, Site Design, Environmental Permitting, Wetlands Permitting & Land Development Permitting

PREPARED FOR:  
 IQHQ-1 CORPORATE, LLC AND IQHQ-4 CORPORATE, LLC  
 ATTN: MR. WILLIAM ASHTON  
 ONE BOSTON PLACE, 201 WASHINGTON STREET, SUITE 3920  
 BOSTON, MASSACHUSETTS 02108  
 TEL: (617) 314-7951

ENTERING TRUCK TURNING EXHIBIT  
 REQUEST FOR DETERMINATION OF APPLICABILITY  
 FOUR CORPORATE DRIVE  
 ANDOVER, MASSACHUSETTS

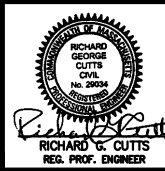
SHEET  
 TTE-1



**LOT A**  
 AREA=1,045,535± S.F.  
 (24.00± ACRES)

DATE	BY	REV#	REVISIONS
3/18/2022	RGC	▲	ISSUED FOR PLANNING BOARD
2/15/2022	RGC	▲	ISSUED FOR PERMITTING

CALC. BY:	WAJ
DR. BY:	WAJ
CKD. BY:	RGC/WAJ
APPD. BY:	RGC
JOB NO.:	21055
SCALE:	1" = 40'
DATE:	FEB. 15, 2022



**OLINDEN ENGINEERING PARTNERS LLC**  
 100 TradeCenter Suite G700  
 Woburn, MA 01801-1851  
 Tel: (781) 933-3711  
 Fax: (781) 287-1277

Civil - Environmental Engineering including Storm water, Wastewater, Water Supply, Highway & Infrastructure Design, Land Planning, Land Subdivision, Site Design, Environmental Permitting, Wetlands Permitting & Land Development Permitting

PREPARED FOR:  
 IQHQ-1 CORPORATE, LLC AND IQHQ-4 CORPORATE, LLC  
 ATTN: MR. WILLIAM ASHTON  
 ONE BOSTON PLACE, 201 WASHINGTON STREET, SUITE 3920  
 BOSTON, MASSACHUSETTS 02108  
 TEL: (617) 314-7951

*EXITING TRUCK TURNING EXHIBIT  
 REQUEST FOR DETERMINATION OF APPLICABILITY  
 FOUR CORPORATE DRIVE  
 ANDOVER, MASSACHUSETTS*

SHEET  
 TTE-2