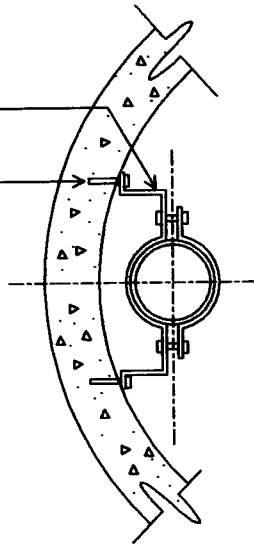
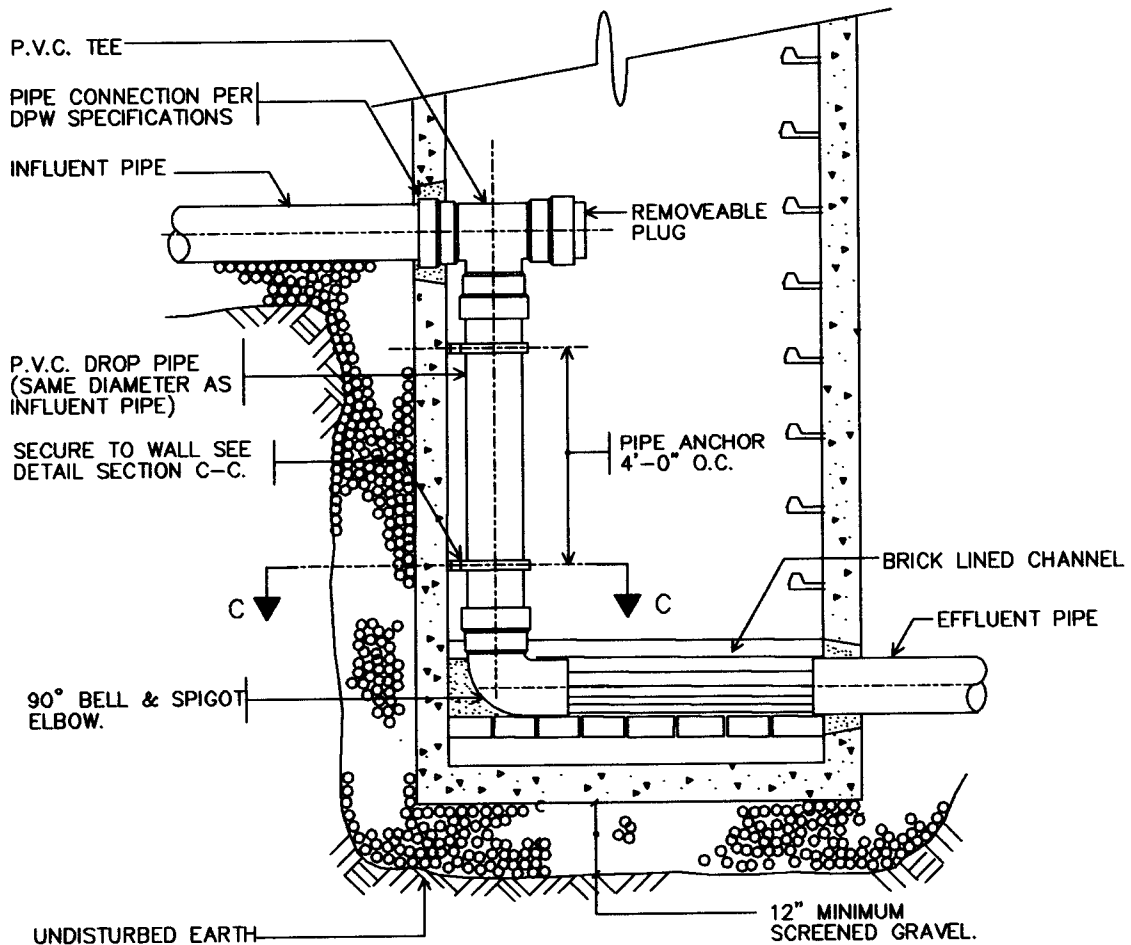


STAINLESS STEEL PIPE
CLAMPS AS SPECIFIED.

1/2" EXPANSION
ANCHORS



SECTION C-C



NOTE:

MINIMUM 5'-0" INSIDE DIA. MANHOLES SHALL
BE USED AT ALL DROP MANHOLE CONNECTIONS

SANITARY SEWER
PVC DROP CONNECTION (INTERNAL)
N.T.S.