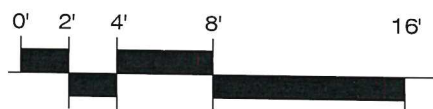




1 NORTH ELEVATION - EXISTING
Scale: 1/8" = 1'-0"



1 NORTH ELEVATION - PROPOSED
Scale: 1/8" = 1'-0"

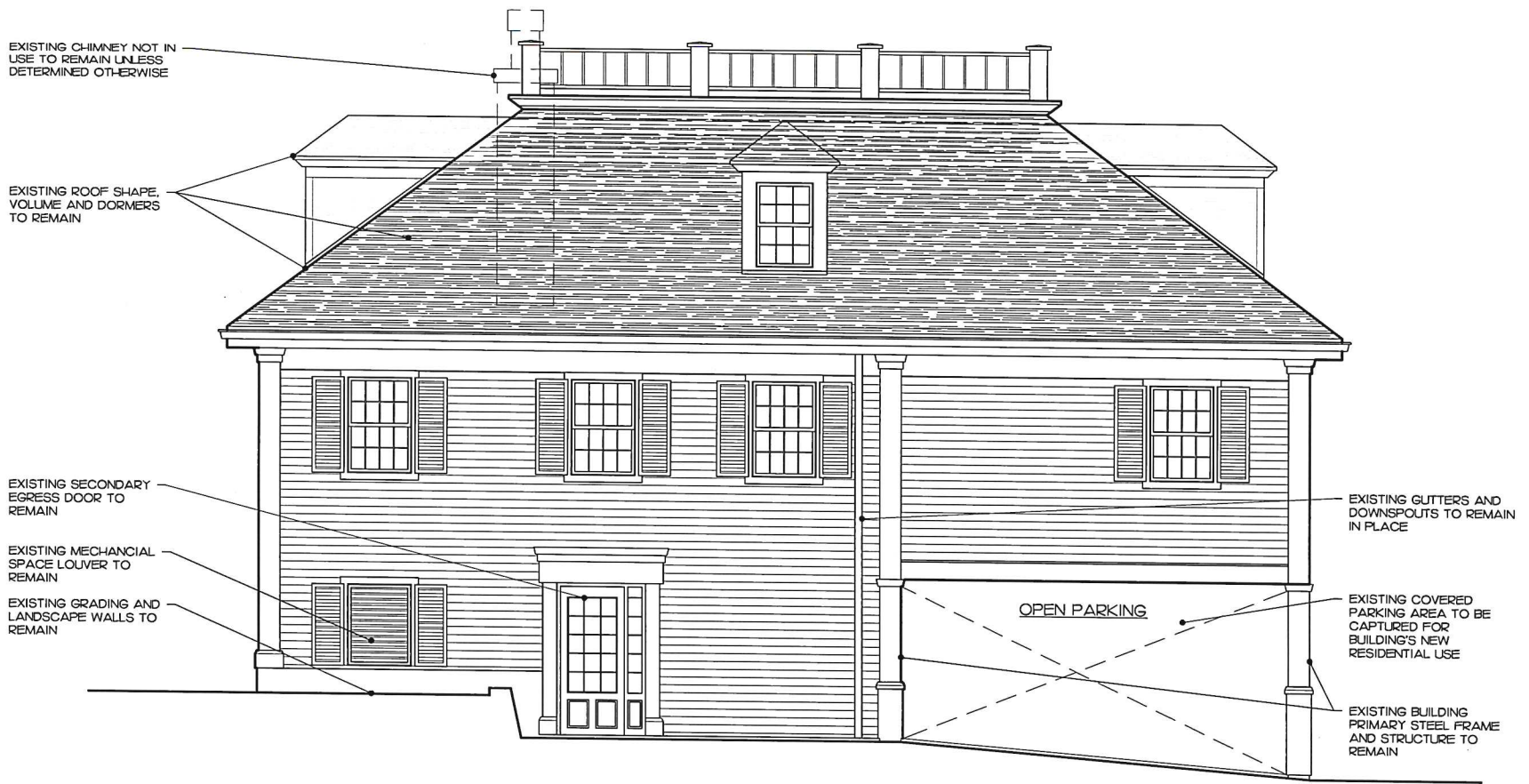
33 Chestnut Street
Andover, MA
Proposed Residential Layout
Scale: As Shown



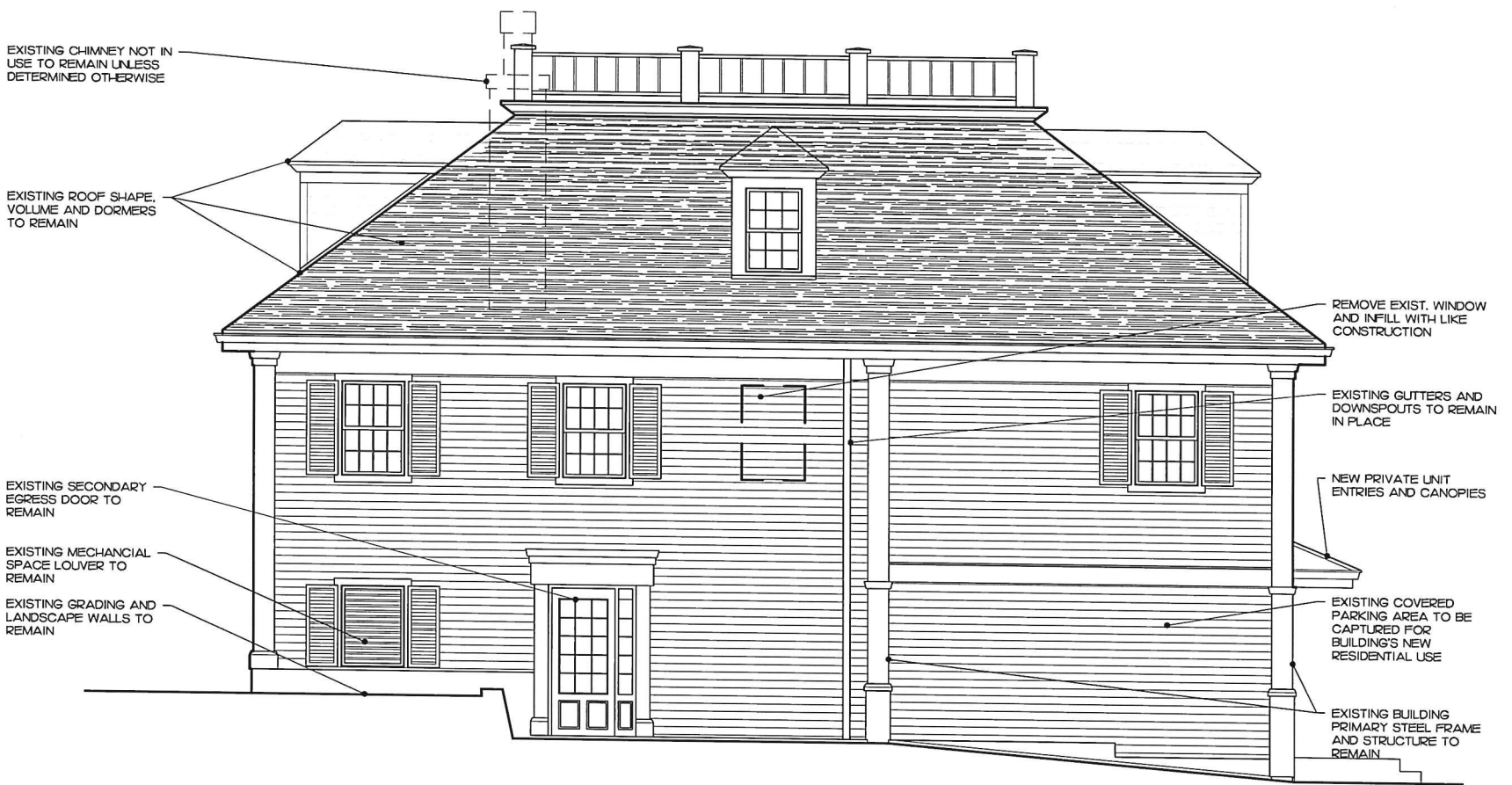
O'SULLIVAN ARCHITECTS, INC.
ARCHITECTURE ■ INTERIORS ■ PLANNING
606 MAIN STREET, SUITE 3001 ■ READING, MA 01867
Tel: (781) 439-6166 ■ Fax: (781) 439-6170 ■ www.osullivanarchitects.com
© 2022 O'Sullivan Architects Inc.

ISSUED	November 30, 2022
REVISED / REVISED BY	3-17-2023

SHEET NUMBER
A3.01
JOB NO:
22044



3 SOUTH ELEVATION - EXISTING
Scale: 1/8" = 1'-0"



3 SOUTH ELEVATION - PROPOSED
Scale: 1/8" = 1'-0"

33 Chestnut Street
Andover, MA
Proposed Residential Layout
Scale: As Shown



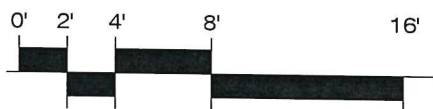
O'SULLIVAN ARCHITECTS, INC.
ARCHITECTURE ■ INTERIORS ■ PLANNING
606 MAIN STREET, SUITE 3001 ■ READING, MA 01867
Tel: (781) 439-6166 ■ Fax: (781) 439-6170 ■ www.osullivanarchitects.com
© 2022 O'Sullivan Architects Inc.

ISSUED	November 30, 2022
REVISED / REVISED BY	3-17-2023

SHEET NUMBER
A3.03
JOB NO:
22044



2 EAST ELEVATION - EXISTING
Scale: 1/8" = 1'-0"



2 EAST ELEVATION - PROPOSED
Scale: 1/8" = 1'-0"

33 Chestnut Street
Andover, MA
Proposed Residential Layout
Scale: As Shown

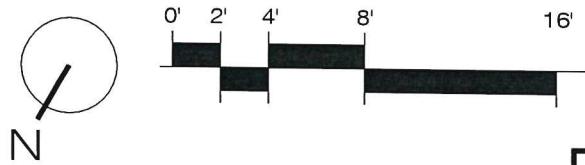
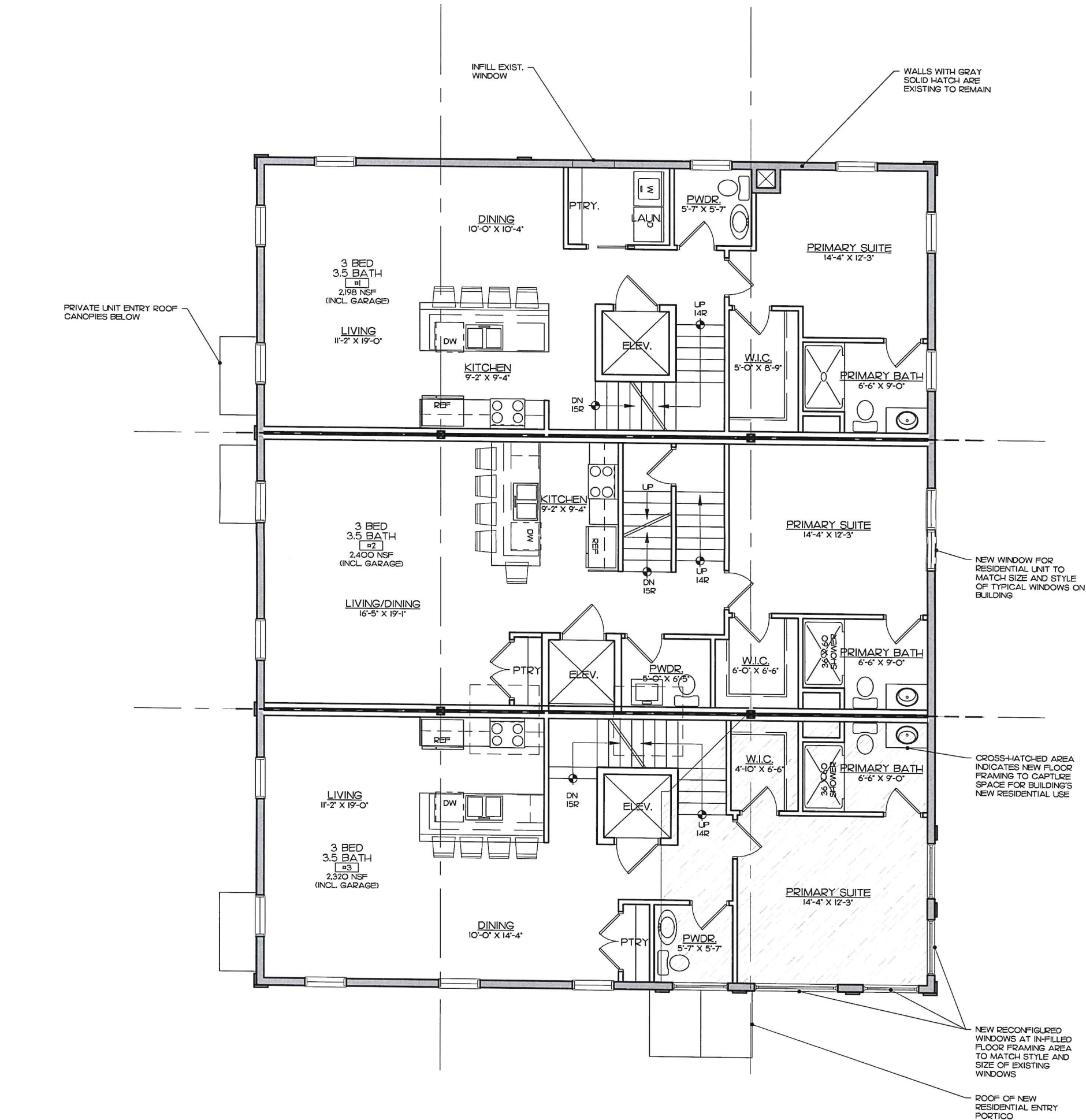


O'SULLIVAN ARCHITECTS, INC.
ARCHITECTURE ■ INTERIORS ■ PLANNING

606 MAIN STREET, SUITE 3001 ■ READING, MA 01867
Tel: (781) 439-6166 ■ Fax: (781) 439-6170 ■ www.osullivanarchitects.com
© 2022 O'Sullivan Architects Inc.

ISSUED	November 30, 2022
REVISED / REVISED BY	3-17-2023

SHEET NUMBER	A3.02
JOB NO:	22044



2 SECOND LEVEL PLAN - PROPOSED

Scale: 1/8" = 1'-0"

33 Chestnut Street
 Andover, MA
 Proposed Residential Layout
 Scale: As Shown



O'SULLIVAN ARCHITECTS, INC.
 ARCHITECTURE ■ INTERIORS ■ PLANNING
 606 MAIN STREET, SUITE 3001 ■ READING, MA 01867
 Tel: (781) 439-6166 ■ Fax: (781) 439-6170 ■ www.osullivanarchitects.com
 © 2022 O'Sullivan Architects Inc.

ISSUED	November 30, 2022
REVISED / REVISED BY	3-8-2023
	3-14-2023

SHEET NUMBER	A1.02
JOB NO:	22044

