

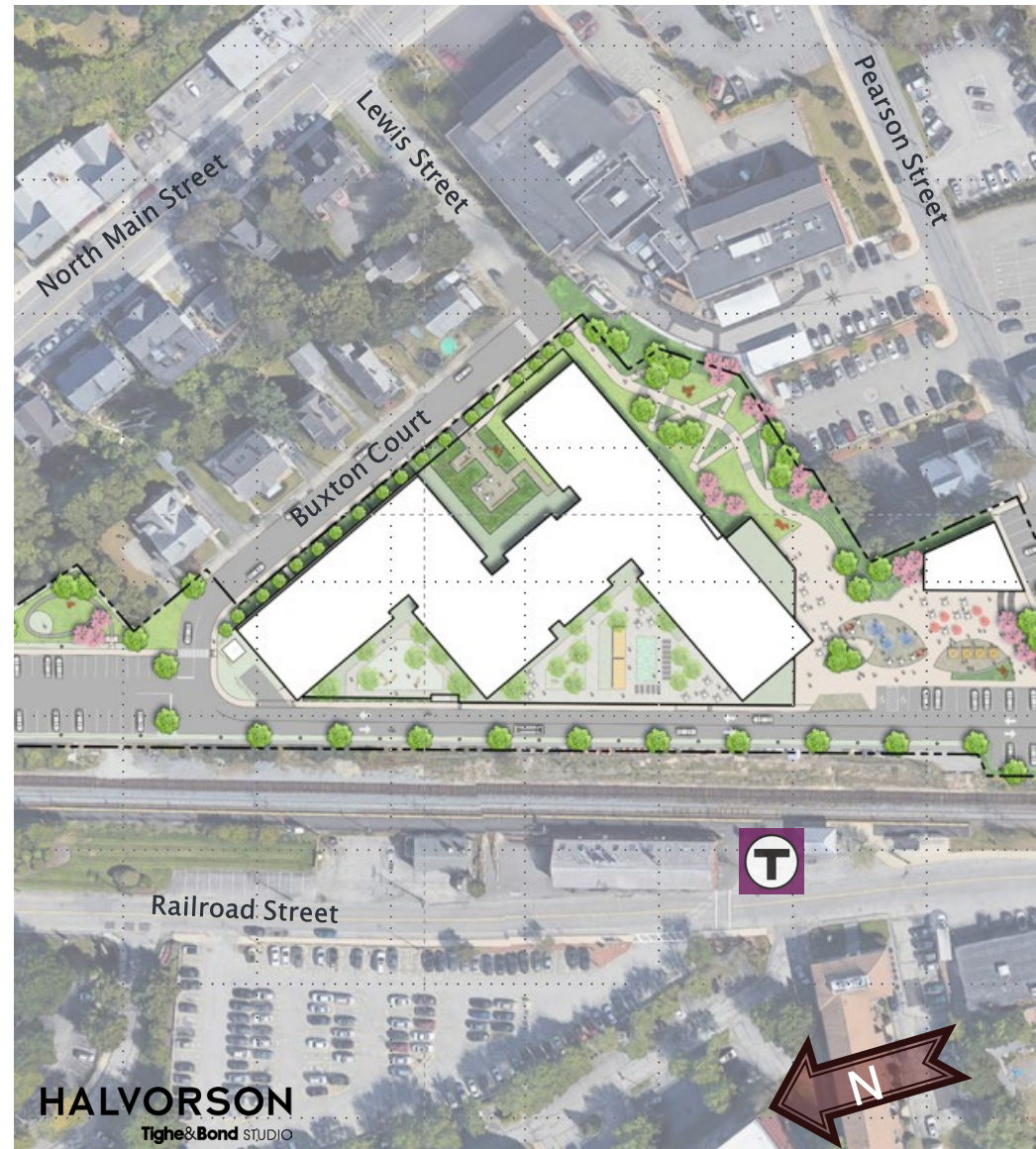
Transportation Impact Assessment

TIA Components

- Identify Traffic Impact of Project
- Study Area determined with Town Staff and Planning Board input
- Review of Safety/Crash Data
- Estimate of Project Trip Generation
- Overall Traffic Impact Results
- Community Building/Pearson Street Parking
- MassWORKS aspects of TIA

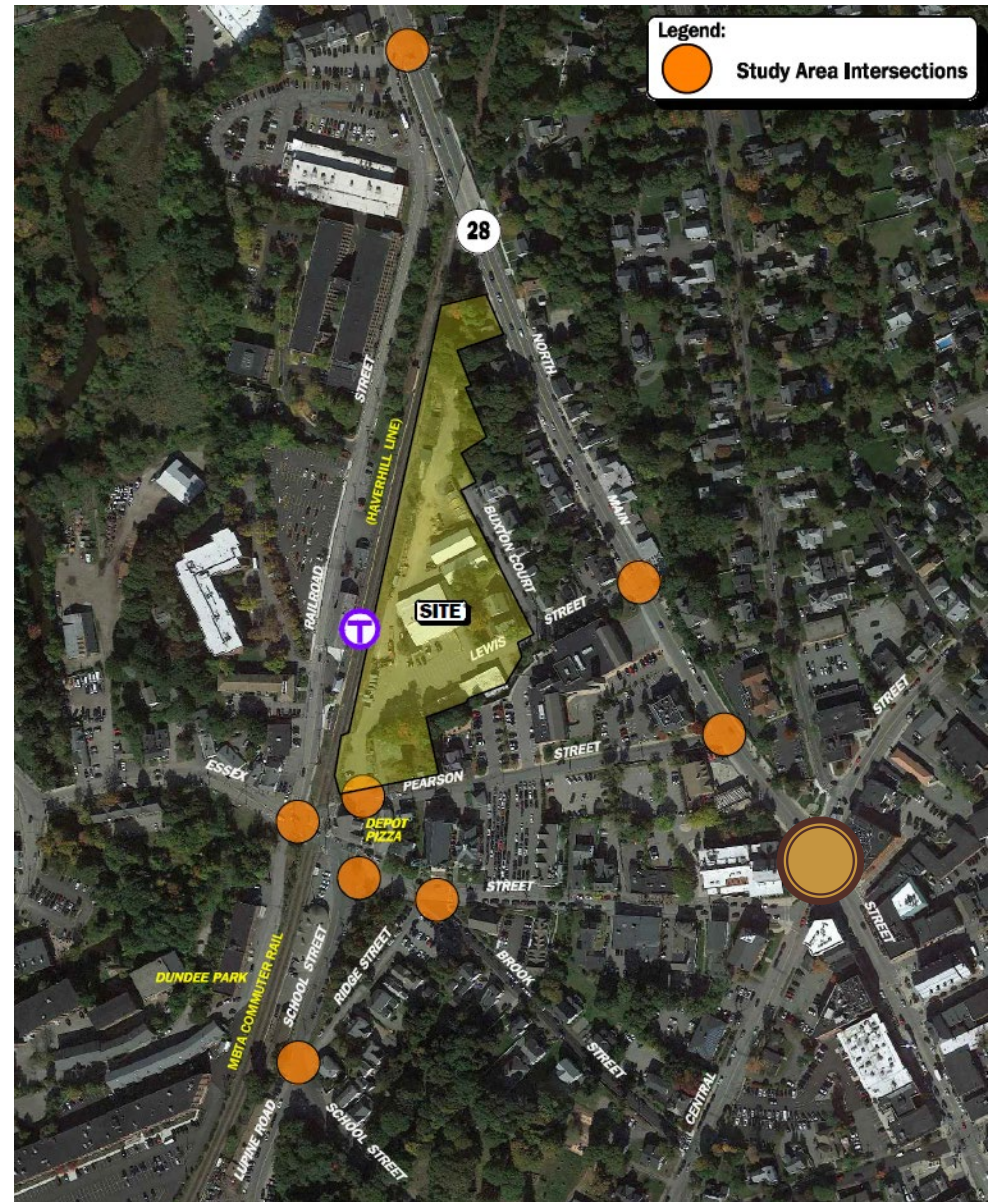
Site Plan

- Mix of residential and accessory uses
- Convenient to MBTA Andover Commuter Rail station and MVRTA Bus Route 21 and Bus Route 2
- Access through Lewis Street and Buxton Court to the north and east
- Access through Pearson Street to the south



Study Area and Site Location Map

- 8 intersections as identified with Town Staff and Planning Board in August 2023
- 9th intersection (Elm Square) added by Town Staff following IDR meeting in December 2023
- Traffic counts conducted in September 2023
- Reviews for existing volumes, crash data, and traffic operations conducted



Multi-Use Development

- Mix of uses on or near site complimenting each other
- Non-residential uses appeal to neighborhood or local existing patrons
- Opportunity for trips to be made without need for personal autos, including walking trips from neighborhood, site, commuter rail stop, and others



Project Vehicle Trip Generation

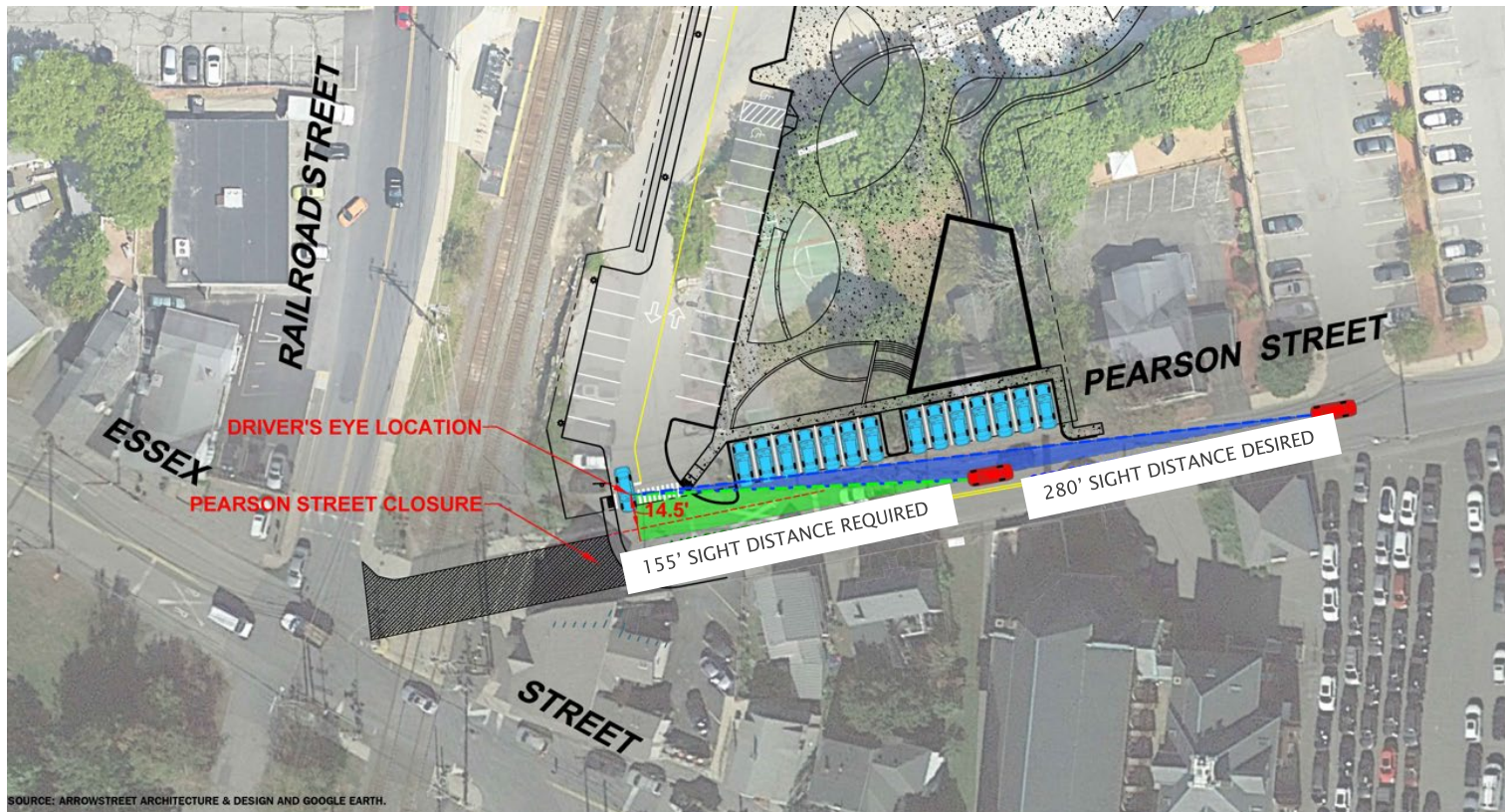
Time Period/ Directional Distribution	Multi- Family Residential Units (A)	Gym (B)	Office Space (C)	Recreational Community Center (D)	Coffee Shop (E)	Total
Weekday Daily	276	24	8	64	154	526
Weekday Morning Peak Hour:						
Entering	5	1	1	3	13	23
<u>Exiting</u>	<u>17</u>	<u>1</u>	<u>0</u>	<u>1</u>	<u>12</u>	<u>31</u>
Total	22	2	1	4	25	54
Weekday Evening Peak Hour:						
Entering	15	2	0	3	6	26
<u>Exiting</u>	<u>9</u>	<u>1</u>	<u>1</u>	<u>3</u>	<u>6</u>	<u>20</u>
Total	24	3	1	6	12	46

Overall TIA Comments

- Project vehicle trips represent 1 additional vehicle trip per minute or less entering or exiting the site during peak morning and evening peak hours
- Project related traffic volume increases are 0.5 to 1.6 percent during peak hours
- No changes in overall intersection LOS due to Project
- No changes to Elm Square operations due to the Project
- Review of closure of Pearson Street due to MassWorks project, resulting 4-way intersection did not meet warrants for traffic signal installation

Community Building Parking

- Closure of Pearson Street improves safety for motorists exiting Community Building parking spaces.
- Review of sight distance indicates between 140 feet and 280 feet of sight distance exists for vehicles exiting site driveway.

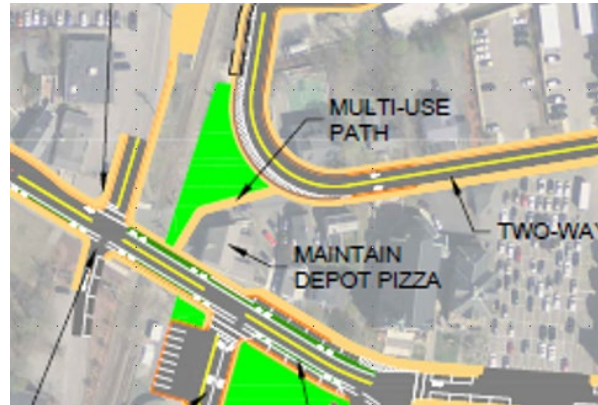


MassWorks Pearson Street Closure

Option 1 – Roundabout



Option 2 – Direct Connection



Option 3 – Expansion to School Street



All options are preliminary in MassWorks materials and presentations, but all depict Pearson Street as closed in all MassWorks drawings.

Next Steps

- Working with Town Departments and Staff on Pearson Street configuration as requested
- Working on responses to comments from Peer Reviewer, some responses will be informed by Pearson Street configuration

THANK YOU!