

# Traffic Discussion

---

## Agenda

- Peer Review Comments/VAI Responses
- Mitigation at Intersections
- Circulation
- Pedestrian Safety
- Site Plan Updates

# Peer Review Comments/VAI Responses

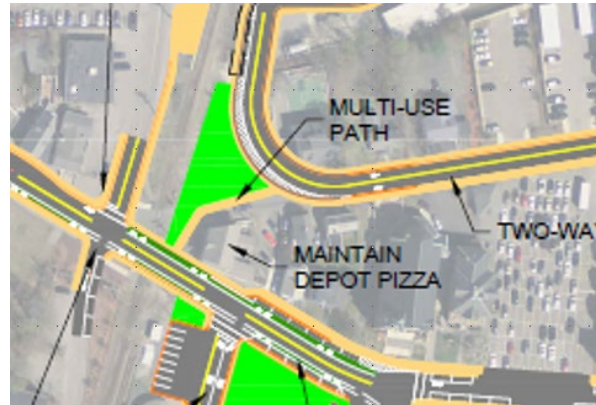
- Peer Reviewer provided 25 comments on traffic study and 22 comments on site plans
- Updated TIA included new analysis of impacts on study area due to reconfigured Pearson Street
- Town Staff confirmed they preferred Pearson Street as 2-way, reflected in updated MassWorks analysis
- Issue areas requiring response/clarification included:
  - Existing Conditions (counts, volumes, transit, crash history)
  - Future Conditions (growth, background projects, MassWorks)
  - Project (trip generation, mode split, distribution)
  - Sight Distances (Pearson Street Driveway, Lewis St/Buxton Ct)
  - Traffic Analysis
  - Mitigation
  - Elm Square

# MassWorks Pearson Street Closure

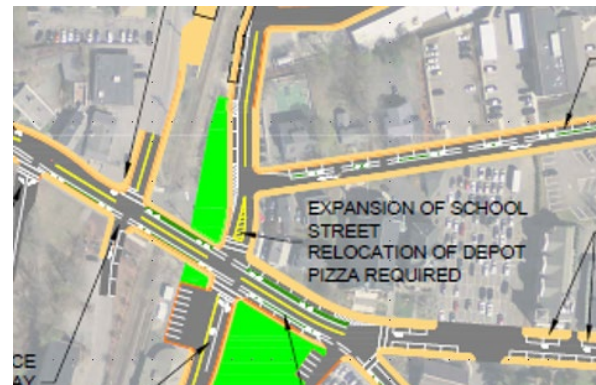
## Option 1 – Roundabout



## Option 2 – Direct Connection



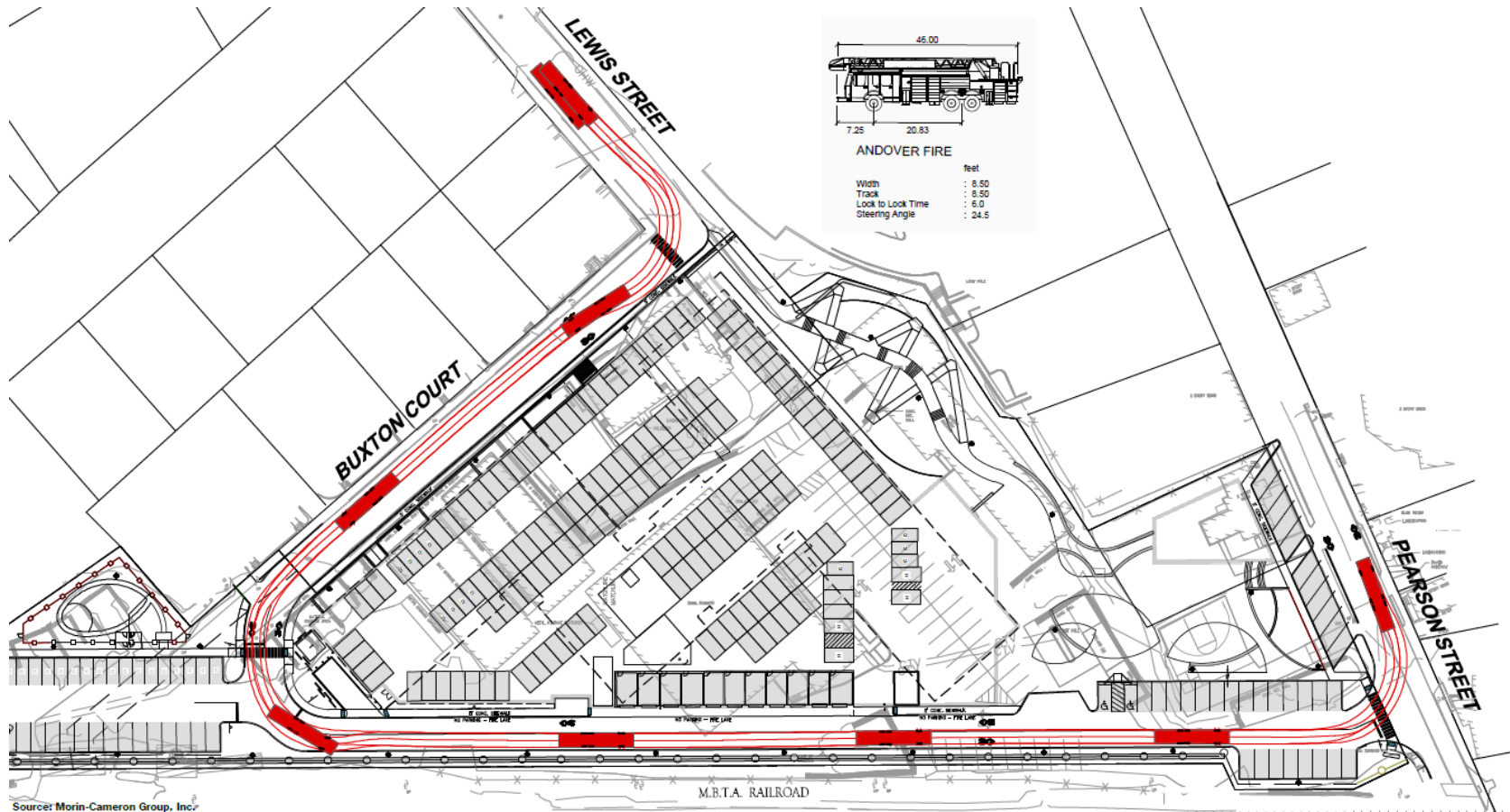
## Option 3 – Expansion to School Street



All options are preliminary in MassWorks materials and presentations, but all depict Pearson Street as closed in all MassWorks drawings.



# Vehicle Circulation



Truck turning templates prepared for Andover Fire Department ladder truck, trash truck, moving van, and delivery vehicles as requested.

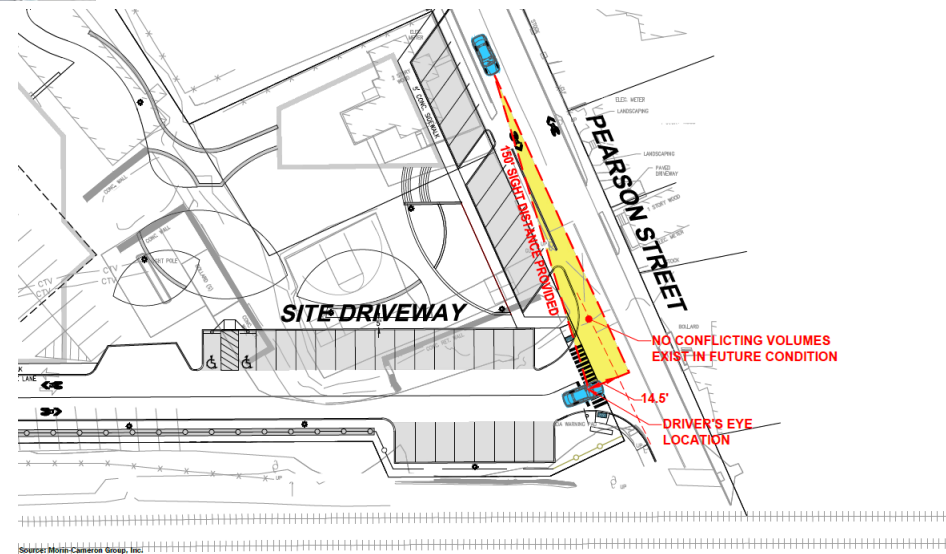
# Sight Distance



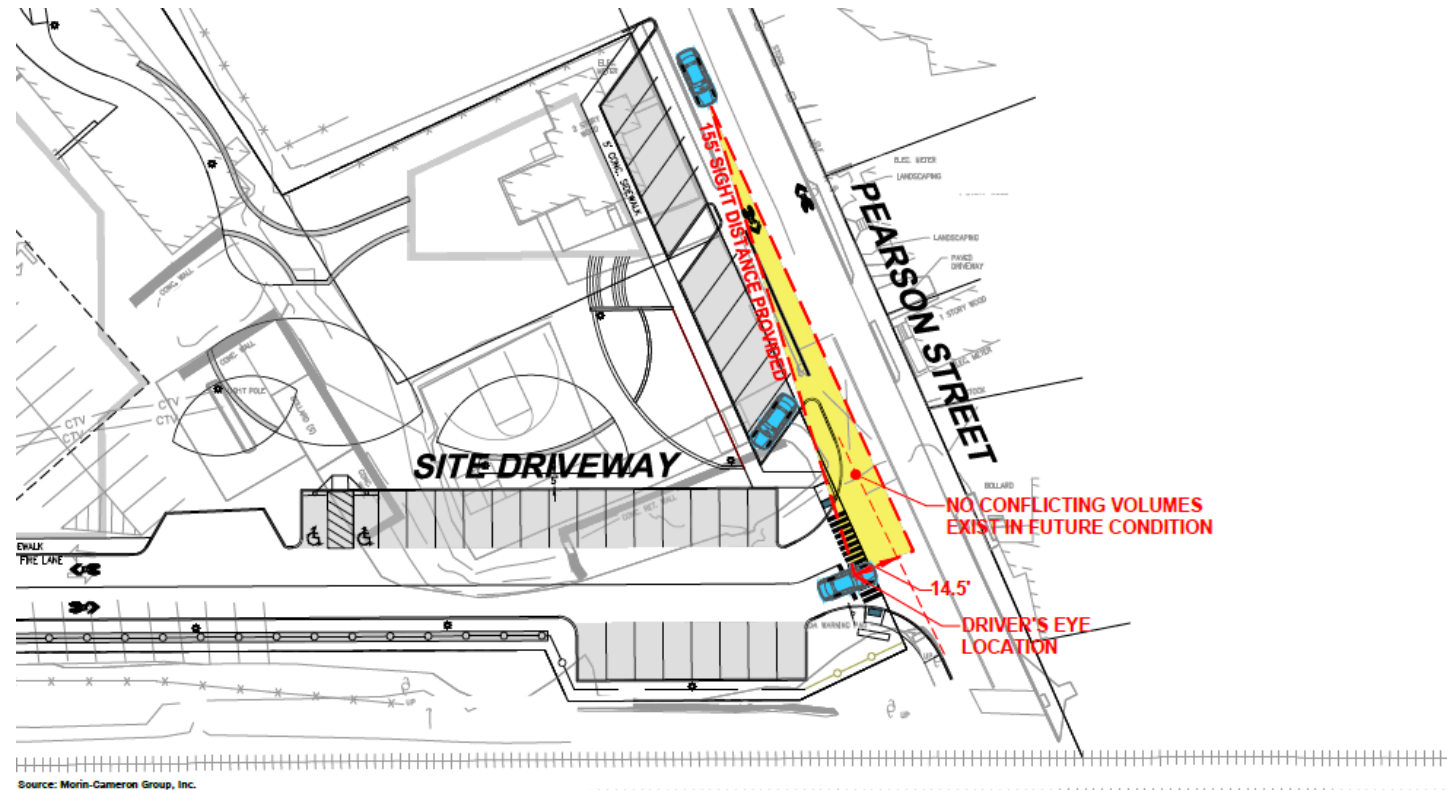
Lewis Street at Buxton Court has right-turn in/left-turn out movements, generally considered non-conflicting. Existing retaining wall at corner is limiting factor.

Pearson Street at Site Driveway sight distance improved with angled parking spaces.

Pearson Street closure also results in right-turn in/left-turn out movements.



# Additional Sight Distance Review



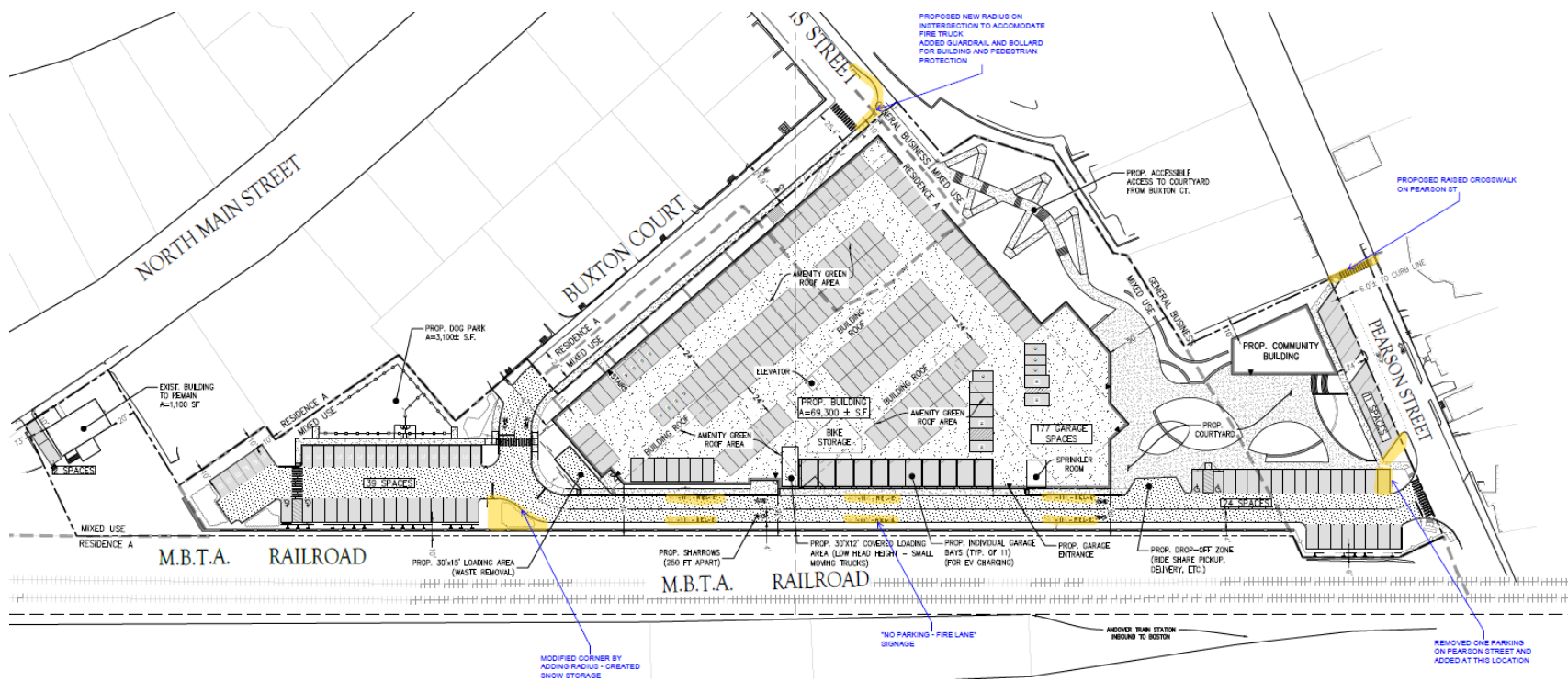
Sight distance reviewed with parked vehicle in place.  
155 feet of Intersection Sight Distance available (25 mph).

# Pedestrian Safety



Raised Pedestrian Crosswalk proposed as traffic calming feature.  
Advance warning signage proposed to alert motorists.

# Site Plan Updates



- Parking layout on Pearson Street revised; one space removed and island width changed to improve visibility. Space added near courtyard.
- Raised crosswalk added on Pearson Street.
- Updated community building footprint.
- Added radius on driveway intersection and accommodated snow storage area.
- Added radius at Lewis St/Buxton Ct and added “No Parking” and “Fire Lane” signage per Fire Department requests.

**THANK YOU!**