

© Channel Building, Inc. expressly reserves its common law copyright and other property rights in these plans. These plans are not to be reproduced, changed or copied in any form or manner whatsoever nor are they to be assigned to any third party without first obtaining the expressed written permission and consent of Channel Building, Inc.

MEDICAL OFFICE BUILDING
140 HAVERHILL STREET
ANDOVER, MA

PROJECT #Project Number

REVISIONS

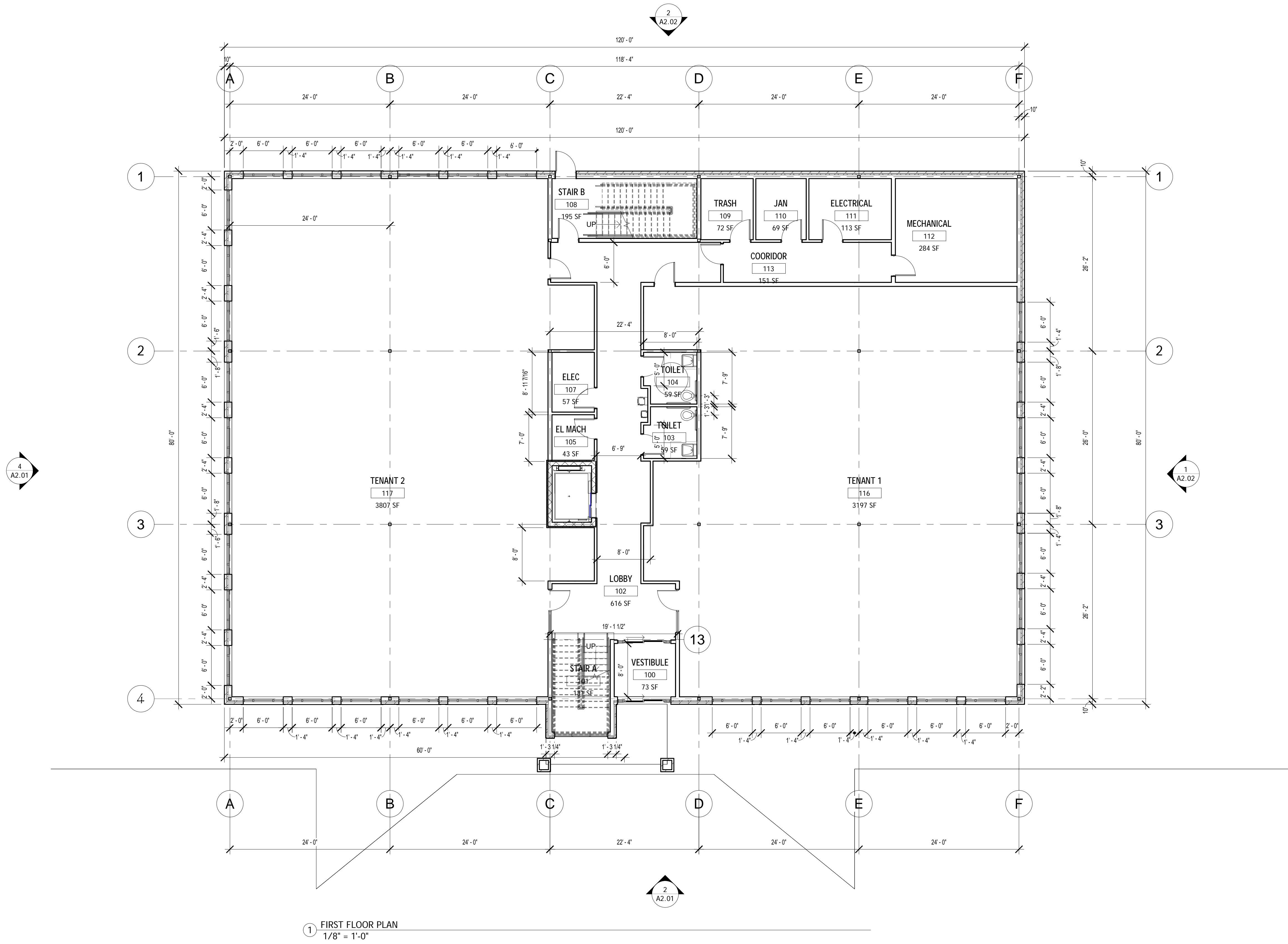
- 1
- 2

DOCUMENT PHASE
CONSTRUCTION SET

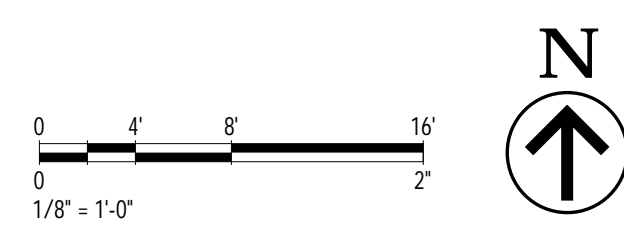
DATE ISSUED
06/12/24

FIRST FLOOR PLAN

A1.01



1 FIRST FLOOR PLAN
1/8" = 1'-0"



© Channel Building, Inc. expressly reserves its common law copyright and other property rights in these plans. These plans are not to be reproduced, changed or copied in any form or manner whatsoever nor are they to be assigned to any third party without first obtaining the expressed written permission and consent of Channel Building, Inc.

MEDICAL OFFICE BUILDING
140 HAVERHILL STREET
ANDOVER, MA

PROJECT #Project Number

REVISIONS

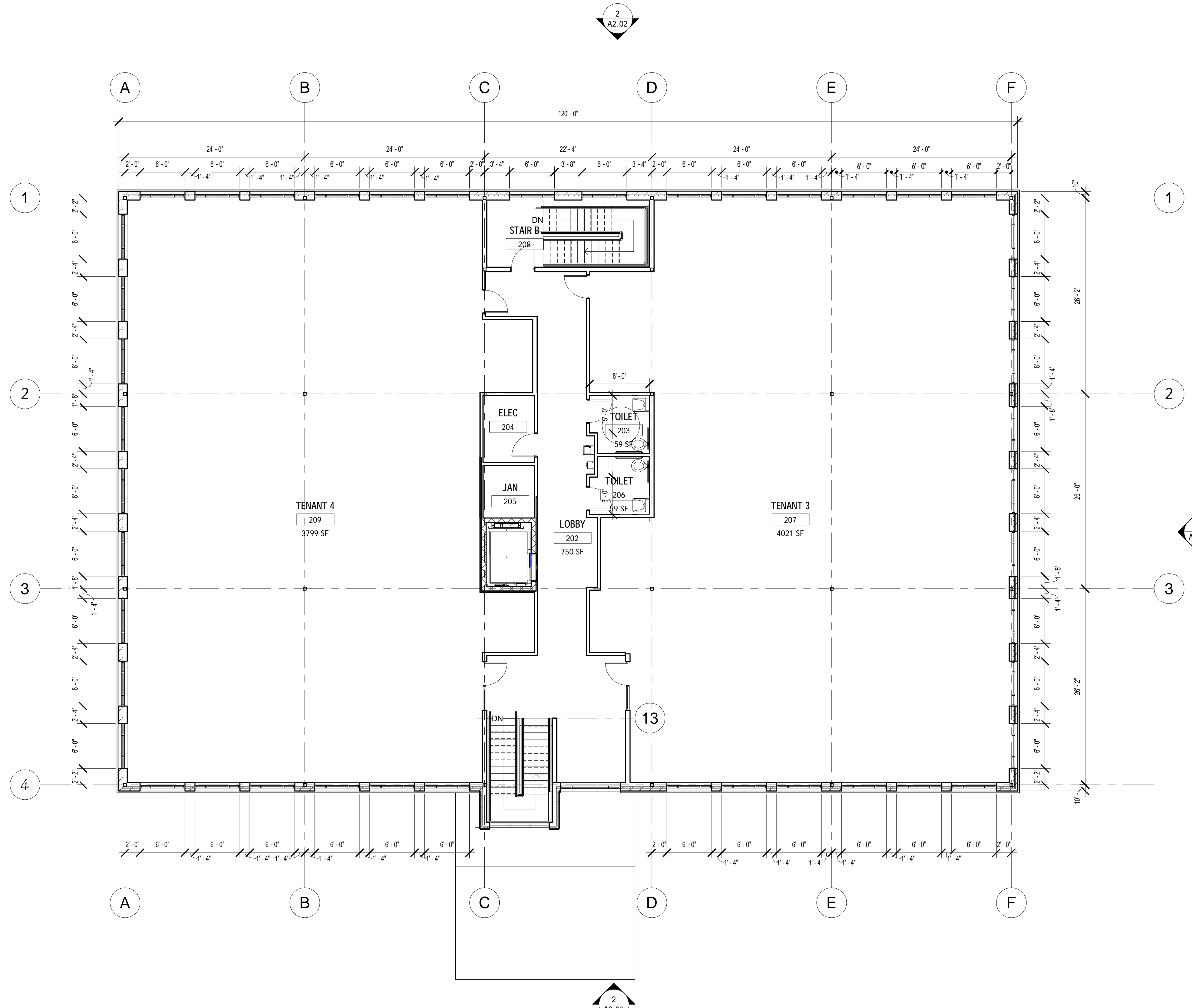
- 1
- 2

DOCUMENT PHASE
CONSTRUCTION SET

DATE ISSUED
06/12/24

SECOND FLOOR
PLAN

A1.02



1 SECOND FLOOR PLAN
1/8" = 1'-0"

© Channel Building, Inc. expressly reserves its common law copyright and other property rights in these plans. These plans are not to be reproduced, changed or copied in any form or manner whatsoever nor are they to be assigned to any third party without first obtaining the expressed written permission and consent of Channel Building, Inc.

MEDICAL OFFICE BUILDING
140 HAVERHILL STREET
ANDOVER, MA

PROJECT #Project Number

REVISIONS

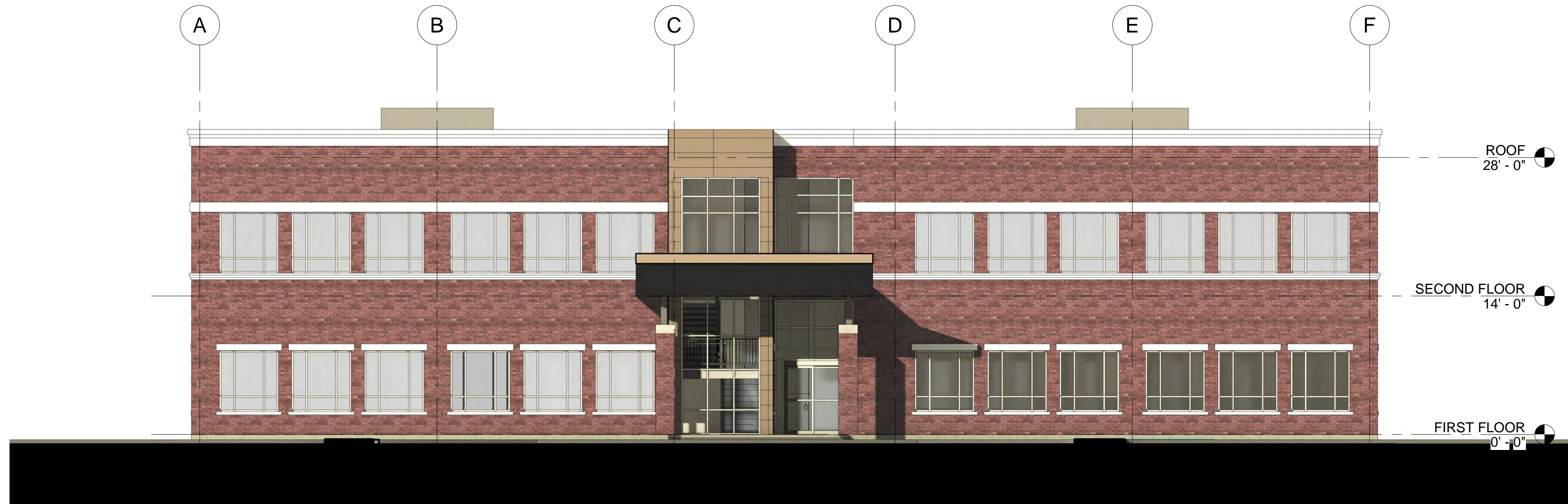
- 1
- 2

DOCUMENT PHASE
CONSTRUCTION SET

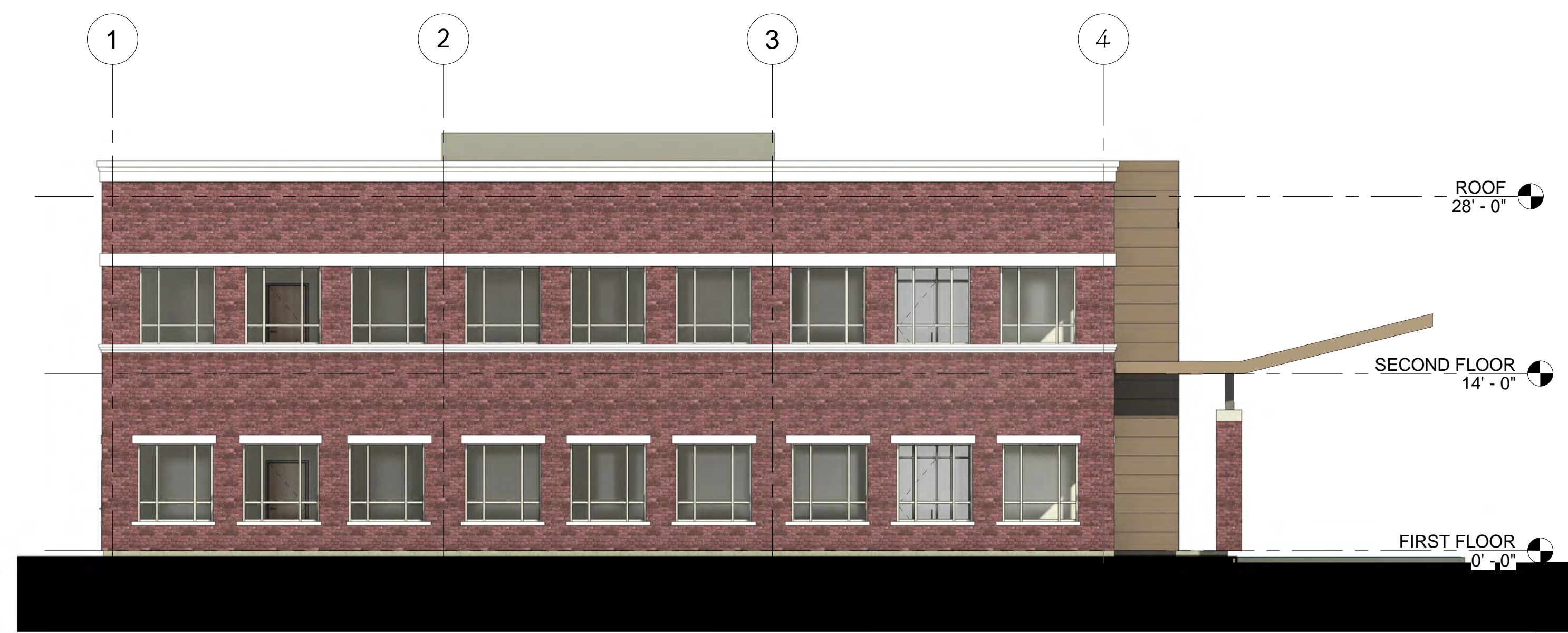
DATE ISSUED
06/12/24

BUILDING
ELEVATIONS

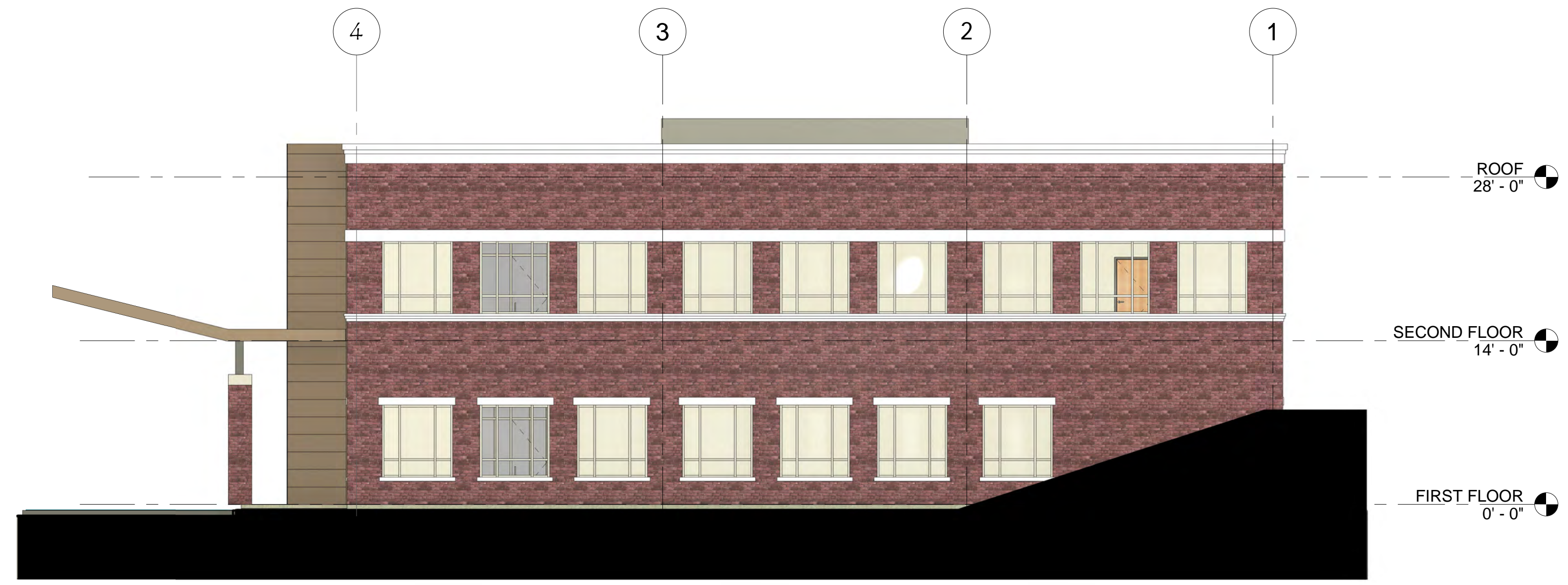
A2.01



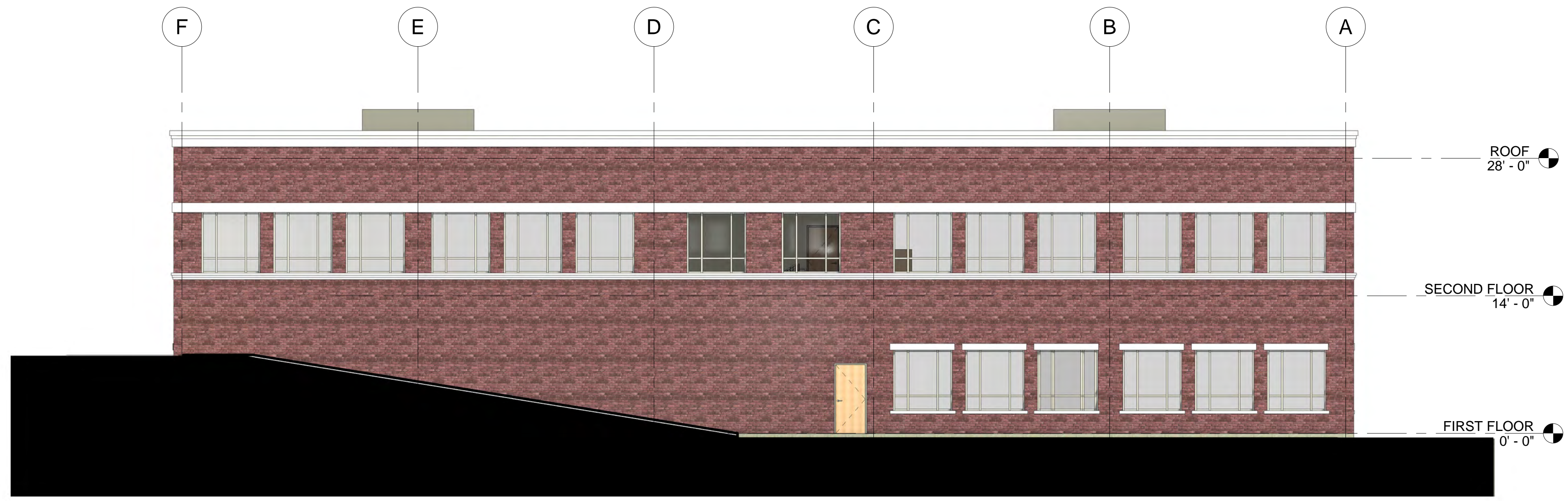
2 SOUTH ELEVATION
1/8" = 1'-0"



4 WEST ELEVATION
1/8" = 1'-0"



① EAST ELEVATION
1/8" = 1'-0"



② NORTH ELEVATION
1/8" = 1'-0"

© Channel Building, Inc. expressly reserves its common law copyright and other property rights in these plans. These plans are not to be reproduced, changed or copied in any form or manner whatsoever nor are they to be assigned to any third party without first obtaining the expressed written permission and consent of Channel Building, Inc.

MEDICAL OFFICE BUILDING
140 HAVERHILL STREET
ANDOVER, MA

PROJECT #Project Number

REVISIONS

- ①
- ②

DOCUMENT PHASE
CONSTRUCTION SET

DATE ISSUED
06/12/24

BUILDING
ELEVATIONS

A2.02