

P&G Andover Manufacturing Center Enhancement Project



Presentation Outline

- Landscaping
- Stormwater
- Traffic
- Tewksbury Abutter Concerns
 - Site Prep
 - Vibration
 - Highway Noise
 - H₂N₂ Storage
- Q&A and Next Steps



Landscaping



Tree - *Acer rubrum*
"October Glory"



Tree - *Cladrastis kentukea*



Tree - *Ginkgo biloba*
"Autumn Gold"



Tree - *Gleditsia triacanthos inermis*
"Suncole"



Tree - *Quercus coccinea*



Tree - *Ulmus American*
"Princeton"



Shrub - *Aronia melanocarpa*
"Autumn Magic"



Shrub - *Fothergilla gardenii*



Shrub - *Physocarpus opulifolius*
"Donna May"



Shrub - *Rhus aromatica Gro-Low*



Fern - *Osmunda cinnamomea*



Fern - *Polystichum acrostichodes*



Groundcover - *Hosta*
"Blue Angel"



Seed Mix - Native Upland Wildlife Forage



Seed Mix - Pearl's Premium

PLANT SCHEDULE

KEY	BOTANICAL NAME	COMMON NAME	SIZE	QTY	NOTES
TREES					
QC	<i>Quercus coccinea</i>	Scarlet Oak	2.5-4"	3	Single Stem, 2 at 2.5-3, 1 at 3.5-4
GB	<i>Ginkgo biloba</i> "Autumn Gold"	Maidenhair Tree	3.5-4"	3	Single Stem
UA	<i>Ulmus American</i> "Princeton"	Princeton American Elm	2.5-3"	4	Single Stem
AR	<i>Aronia rubrum</i> "October Glory"	Chokeberrry	2.5-3"	2	Single Stem
GT	<i>Gleditsia triacanthos inermis</i> "Suncole"	Sunburst Honey Locust	2.5-3"	2	Single Stem
CK	<i>Cladrastis kentukea</i>	Yellowwood	2.5-3"	2	Single Stem
SHRUBS					
PM	<i>Physocarpus opulifolius</i> "Donna May"	Little David Nandebark	2 GAL	80	SPACE 41" O.C.
AM	<i>Aronia melanocarpa</i> "Autumn Magic"	Autumn Magic Chokeberry	2 GAL	75	SPACE 41" O.C.
FG	<i>Fothergilla gardenii</i>	Dwarf Fothergilla	2 GAL	80	SPACE 41" O.C.
RA	<i>Rhus aromatica Gro-Low</i>	Gro-Low Fragrant Sumac	2 GAL	60	SPACE 41" O.C.
FERNS / GROUND COVER MIX					
OC	<i>Osmunda cinnamomea</i>	Cinnamon Fern	1 GAL	208	SPACE 21" O.C.
PA	<i>Polystichum acrostichodes</i>	Cinnamon Fern	1 GAL	208	SPACE 21" O.C.
HO	<i>Hosta</i> "Blue Angel"	Blue Angel Hosta	1 GAL	208	SPACE 21" O.C.
SEED MIXES					
UW	Native Upland Wildlife Forage & Cover Meadow Mix - ERMIX-123			77.90056	20 Bsquare W/ 30 lbs./acre Cover Crop
AMN	PEARL'S PREMIUM			34.90056	10 lbs. per 1000 SF

Project:
P&G ANDOVER MANUFACTURING CENTER ENHANCEMENT PROJECT

30 BURTT ROAD
ANDOVER, MA
01810



landworks studio

PERMITTING SET
NOT FOR CONSTRUCTION
16 APRIL 2024

Stamp:

No. Date Revision

Job No.: PRINCIPRO

Drawn By:

Checked By:

Date:

Scale:

Drawing Title:

Drawing No.:

Landscaping

- EXISTING



Landscaping

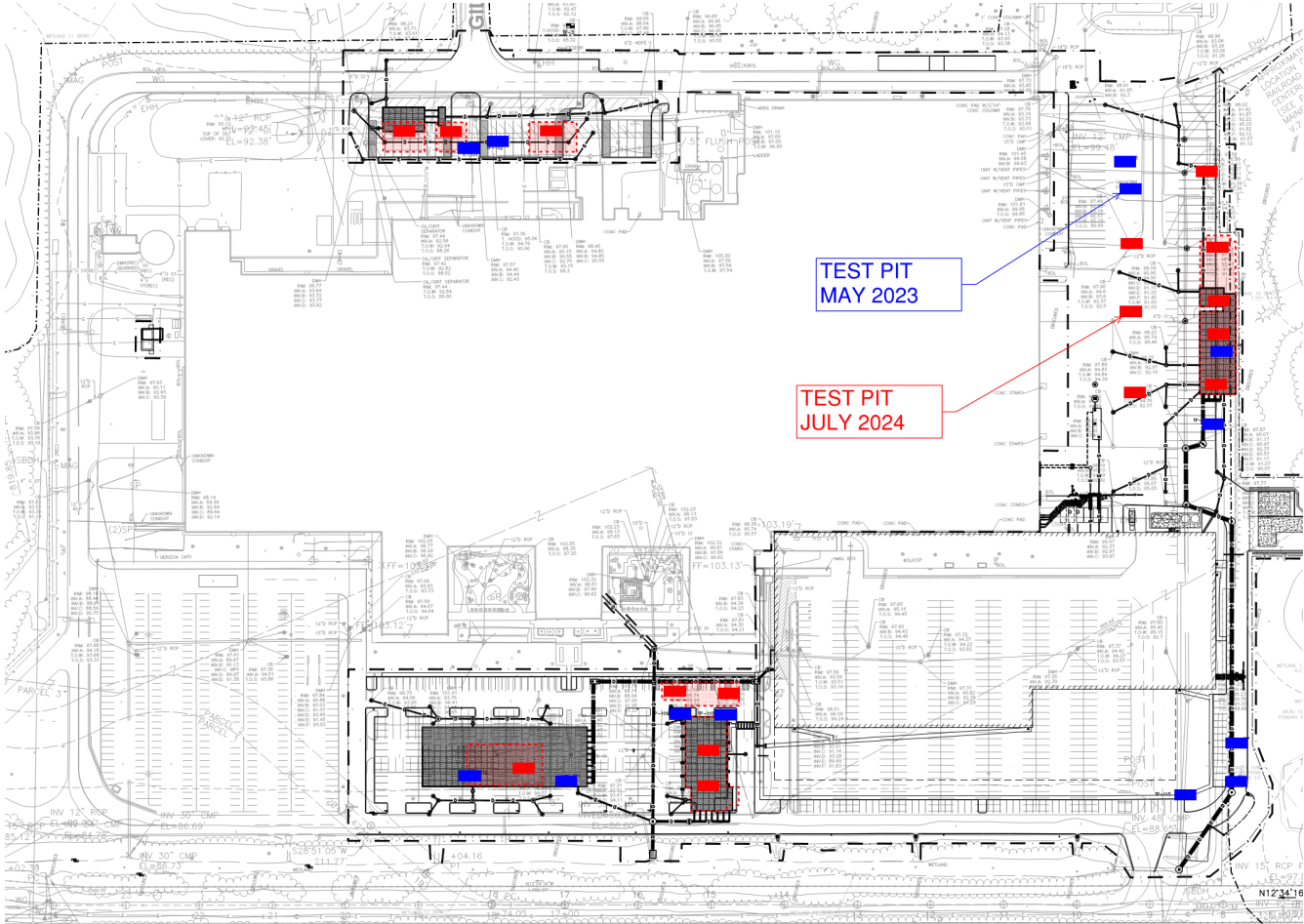
- PROPOSED



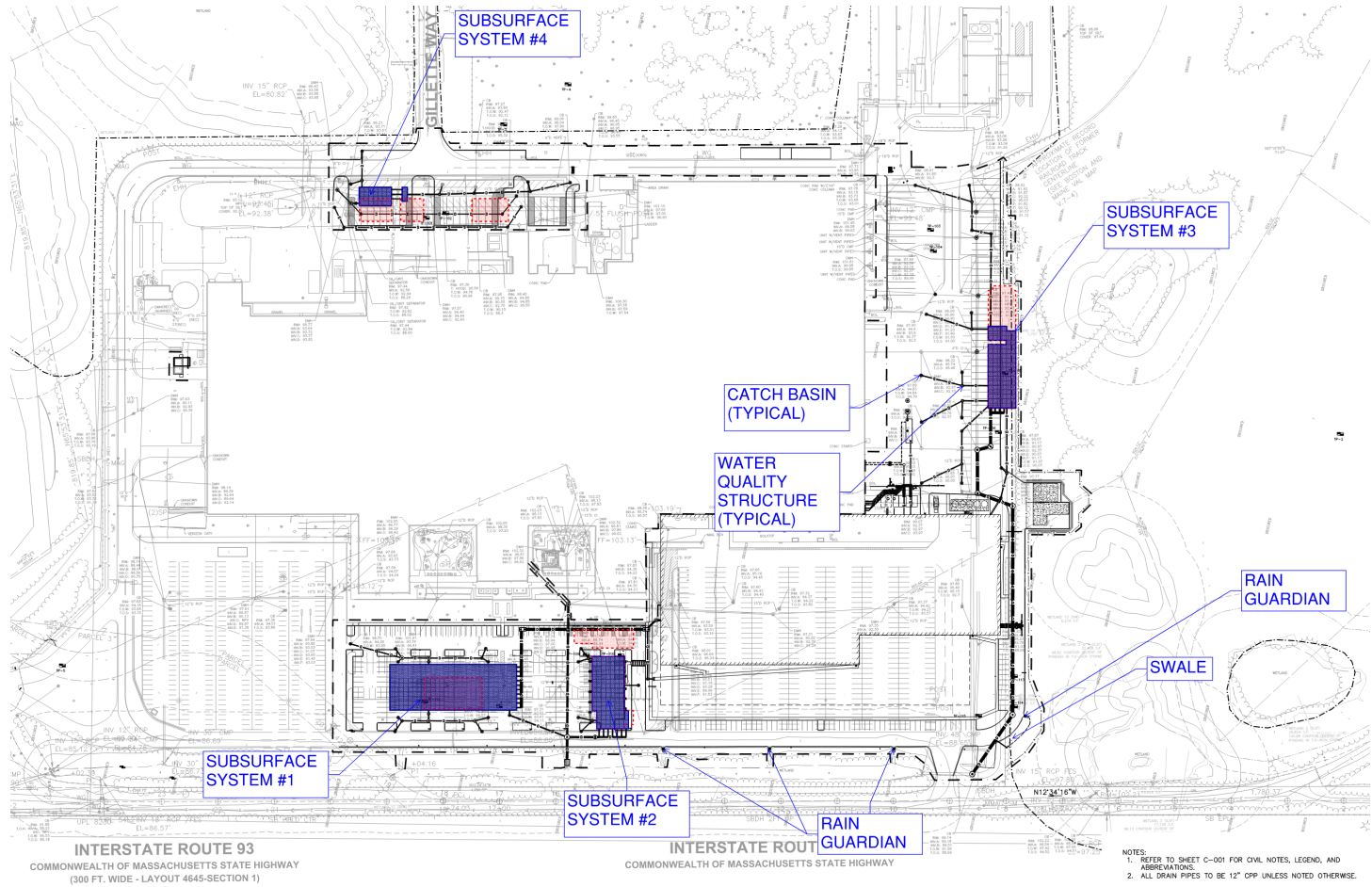
Stormwater

- Received initial stormwater peer review on June 25, 2024
- Additional Test Pits July 2024
- Revised plans and stormwater report
- Design Meets MassDEP Stormwater Regulations, Town of Andover Stormwater Regulations.
- Received second stormwater peer review August 8, 2024

Stormwater



Stormwater

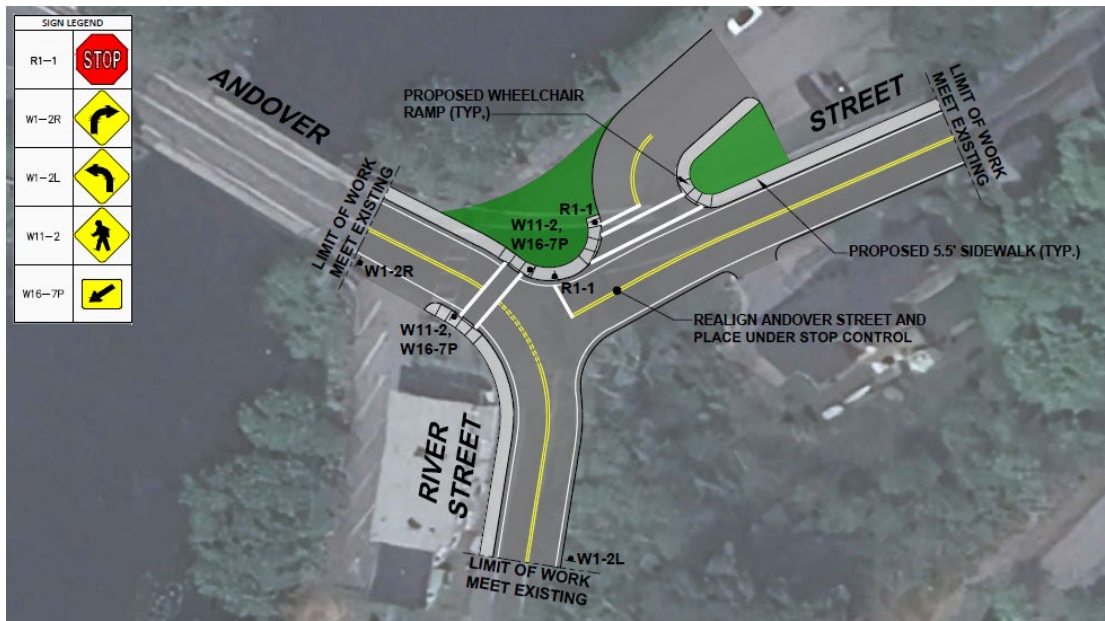


Traffic

- Provided response to GPI peer review letter on August 1, 2024.
- Expanded study area to Wilmington locations as requested.
- Provided clarification on trip generation, trip distribution, employee shifts and operations.
- Provided parking analysis showing adequacy of parking supply.
- Identified mitigation to which Gillette is prepared to contribute.
- Awaiting GPI's confirmation of findings.

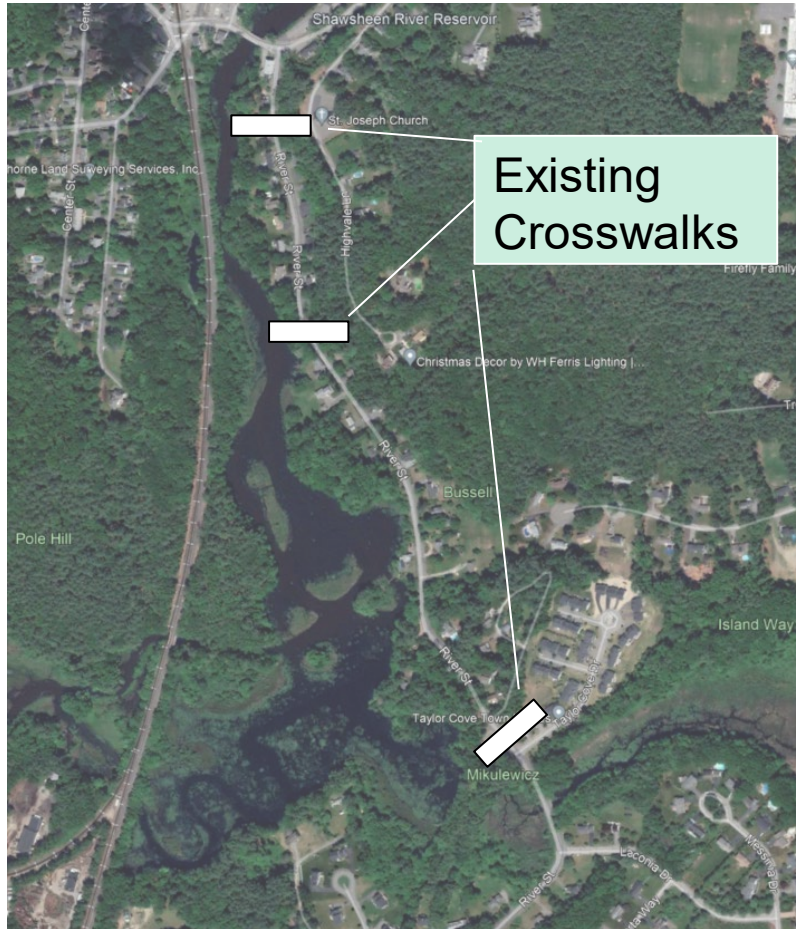
Traffic

Potential Andover Street/River Street Improvements



- Prioritizes north-south traffic flow
- Improves visibility of Andover Street crosswalk
- Reduces River Street delay and queues

Traffic



- Pedestrian improvements proposed
- Contribution towards RRFB at a location along River Street
- Pushbutton flasher for pedestrians to cross street, similar to Lowell Street at Chandler Circle and Lincoln Street (pictured).

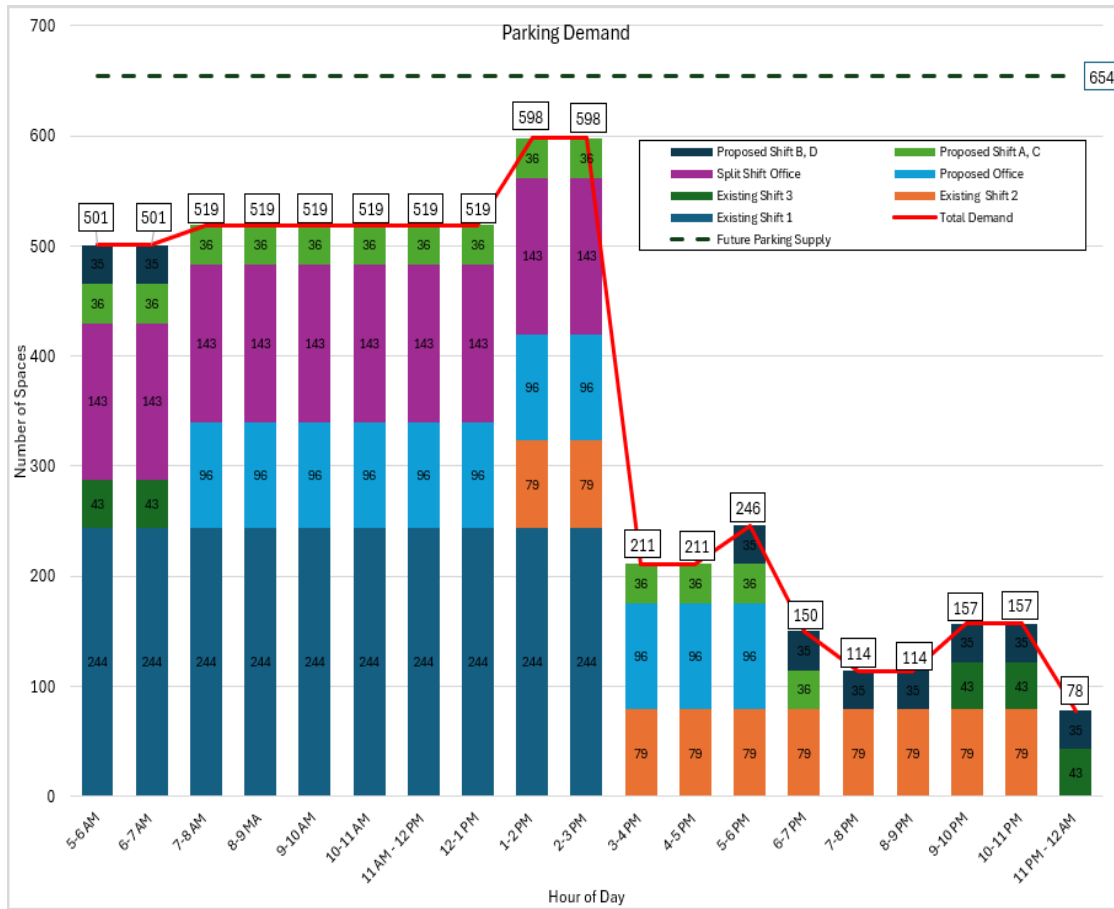
Traffic

Additional mitigation: Intersection Control & TDM



- All-Way STOP Control to balance delays
- TDM Measures
 - TDM Coordinator
 - Encourage car/vanpool registration
 - Review shuttle bus/transit options for employees

Traffic - Parking



- Parking analysis covers existing and proposed future shifts
- Accounts for overlap between shift changes

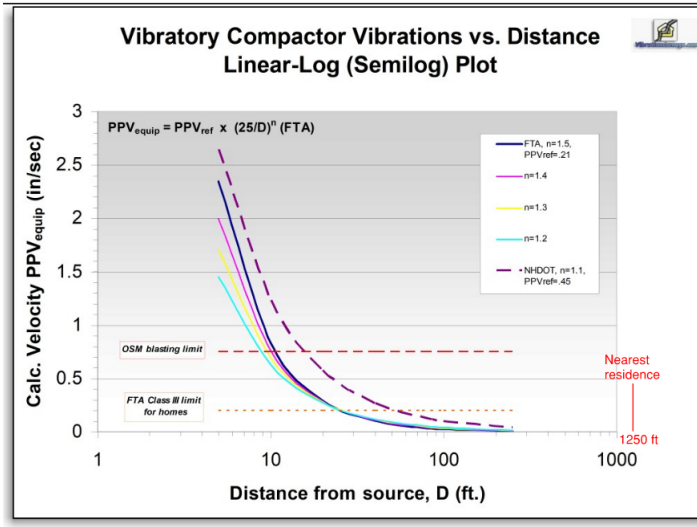
Tewksbury Abutter Comments

- Site Prep
- Vibration
- Highway Noise
- H₂N₂ Storage

Site Prep and Maintenance

- Skanska will follow all provisions of the engineered Stormwater Prevention Plan
- Track Pads, Wheel Wash, Site Labor Sweeping and Street Sweeper's as necessary will prevent soil migration
- Dust control measures such as utilization of crushed stone, misting and wetting will be utilized as necessary
- Only minor interior demolition is currently anticipated as well as some sawcutting of masonry openings. Misting and wetting will be utilized to mitigate any dust
- Site fencing with dust scrim will be utilized

Vibration



- We are NOT utilizing the same compaction utilized at 4 Executive Place - Dynamic Compaction is NOT required
- We will be using a conventional vibratory roller
- Vibrations from these type of equipment drop to minimal levels beyond 250'
- Closest resident from limit of work/fence line is ~1250' across the Highway, therefore we do not see vibrations impacting the community
- Gillette has shared interest in minimizing vibration

Highway Sound Levels

- Primary source of sound affecting Jennies Way neighborhood is vehicle traffic on I-93.
- The P&G building expansion will not measurably affect existing highway sound levels experienced in this neighborhood through reflection.
- For context, the nearest residences from the referenced 4 Executive Place warehouse project is ~700 feet to Jennies Way.
- The nearest residence from the P&G building expansion is nearly twice that distance at ~1,350 feet to Jennies Way.

Hydrogen-Nitrogen System

- Used to produce quality Blades
- Very similar to **existing installation at South Boston**
- Similar systems across the globe in P&G.
- Exceed standards for Hydrogen safety: NFPA, NEC and P&G / supplier's beyond compliance requirements.
- Redundant safeguards prevent loss of H₂.
 - Gas detection provided.
 - Telemetry systems for remote shut down / protection.
- Delivery trailer owned and maintained by the supplier, Air Products.
- Secured fenced area, vehicular barrier protection



Hydrogen-Nitrogen System

Working with Andover Fire Chiefs M. Mansfield, K. Murphy, and Lieutenant R. Beal:

- **Completed positive on-site tour and review** of H₂N₂ installation at Gillette South Boston Site - May 2024
- **3rd Party Review underway** per Fire Chief request to support system design evaluation and compliance approval.
 - Peer review on-track for Aug-Sep 2024 completion
 - System installation beginning ~ mid 2025.
- **Fire Chief and Lieutenant to review** 3rd party report and provide any feedback from Sep thru Dec
- Planning to have permit issued to construct this installation in Spring 25



Q&A and Next Steps

- Q&A

- Next Steps