

NOTES:

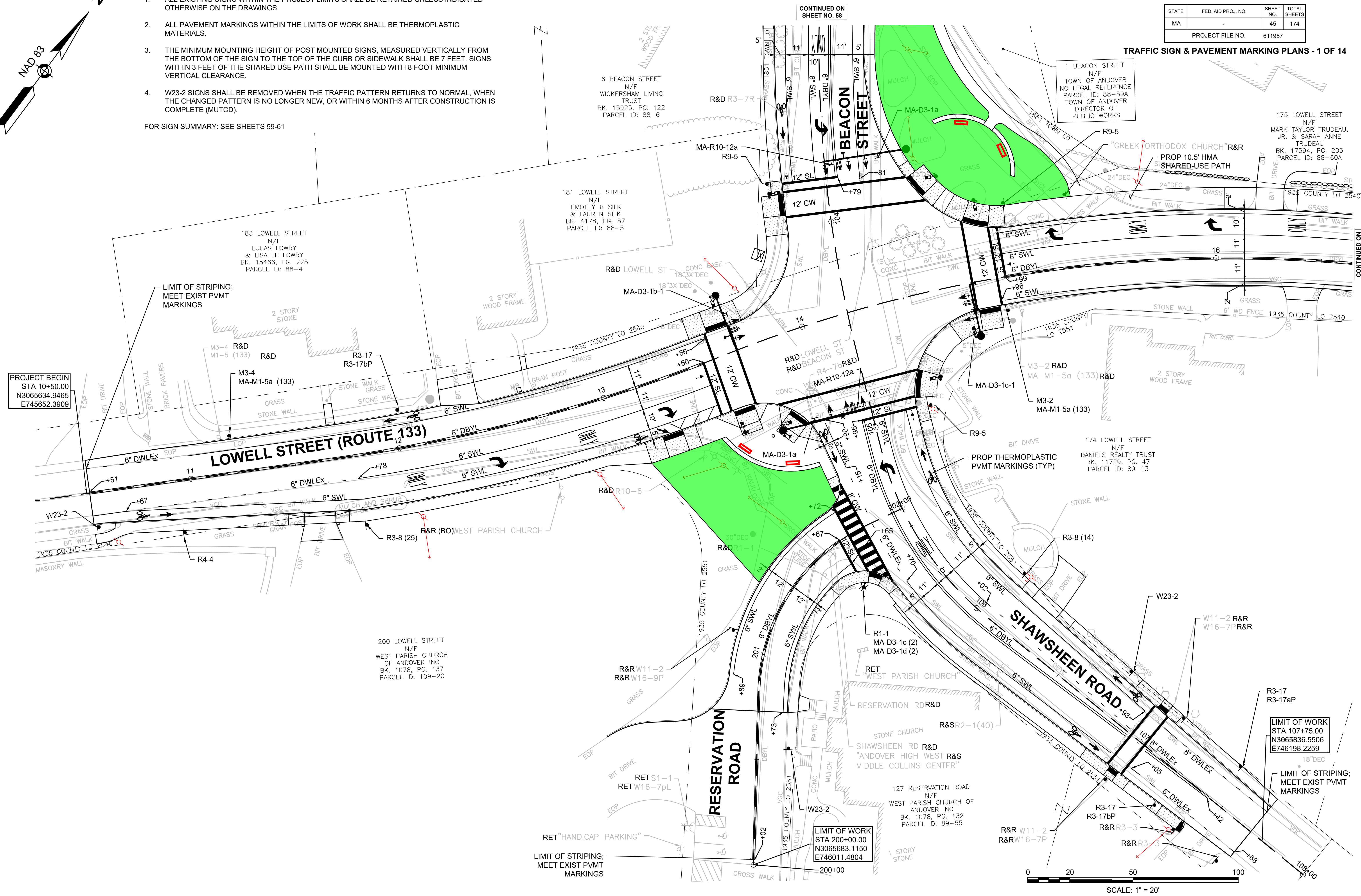
1. ALL EXISTING SIGNS WITHIN THE PROJECT LIMITS SHALL BE RETAINED UNLESS INDICATED OTHERWISE ON THE DRAWINGS.
2. ALL PAVEMENT MARKINGS WITHIN THE LIMITS OF WORK SHALL BE THERMOPLASTIC MATERIALS.
3. THE MINIMUM MOUNTING HEIGHT OF POST MOUNTED SIGNS, MEASURED VERTICALLY FROM THE BOTTOM OF THE SIGN TO THE TOP OF THE CURB OR SIDEWALK SHALL BE 7 FEET. SIGNS WITHIN 3 FEET OF THE SHARED USE PATH SHALL BE MOUNTED WITH 8 FOOT MINIMUM VERTICAL CLEARANCE.
4. W23-2 SIGNS SHALL BE REMOVED WHEN THE TRAFFIC PATTERN RETURNS TO NORMAL, WHEN THE CHANGED PATTERN IS NO LONGER NEW, OR WITHIN 6 MONTHS AFTER CONSTRUCTION IS COMPLETE (MUTCD).

FOR SIGN SUMMARY: SEE SHEETS 59-61

ANDOVER  
LOWELL STREET (ROUTE 133)

STATE	FED. AID PROJ. NO.	SHEET NO.	TOTAL SHEETS
MA		45	174
PROJECT FILE NO.		611957	

TRAFFIC SIGN & PAVEMENT MARKING PLANS - 1 OF 14



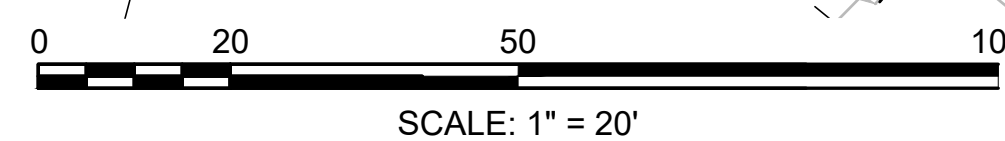
PROJECT BEGIN  
STA 10+50.00  
N3065634.9465  
E745652.3909

LIMIT OF STRIPING;  
MEET EXIST PVMT  
MARKINGS

LIMIT OF WORK  
STA 107+75.00  
N3065836.5506  
E746198.2259

LIMIT OF STRIPING;  
MEET EXIST PVMT  
MARKINGS

LIMIT OF WORK  
STA 200+00.00  
N3065683.1150  
E746011.4804



CONTINUED ON  
SHEET NO. 58

CONTINUED ON  
SHEET NO. 46

ANDOVER  
LOWELL STREET (ROUTE 133)

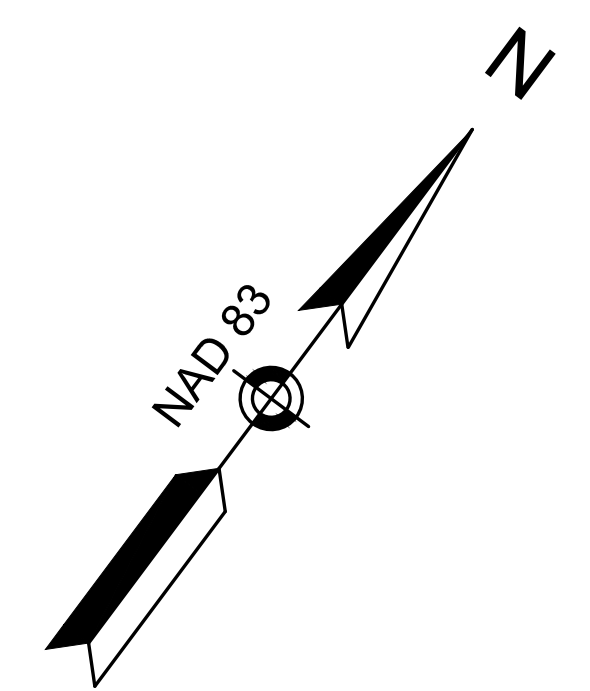
STATE	FED. AID PROJ. NO.	SHEET NO.	TOTAL SHEETS
MA	-	46	174
PROJECT FILE NO.		611957	

TRAFFIC SIGN & PAVEMENT MARKING PLANS - 2 OF 14

NOTES:

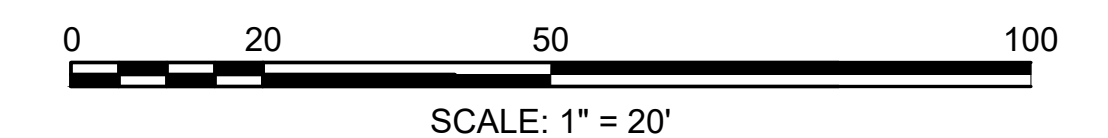
1. ALL EXISTING SIGNS WITHIN THE PROJECT LIMITS SHALL BE RETAINED UNLESS INDICATED OTHERWISE ON THE DRAWINGS.
2. ALL PAVEMENT MARKINGS WITHIN THE LIMITS OF WORK SHALL BE THERMOPLASTIC MATERIALS.
3. THE MINIMUM MOUNTING HEIGHT OF POST MOUNTED SIGNS, MEASURED VERTICALLY FROM THE BOTTOM OF THE SIGN TO THE TOP OF THE CURB OR SIDEWALK SHALL BE 7 FEET. SIGNS WITHIN 3 FEET OF THE SHARED USE PATH SHALL BE MOUNTED WITH 8 FOOT MINIMUM VERTICAL CLEARANCE.

FOR SIGN SUMMARY: SEE SHEETS 59-61



CONTINUED ON  
SHEET NO. 45

CONTINUED ON  
SHEET NO. 47



ANDOVER  
LOWELL STREET (ROUTE 133)

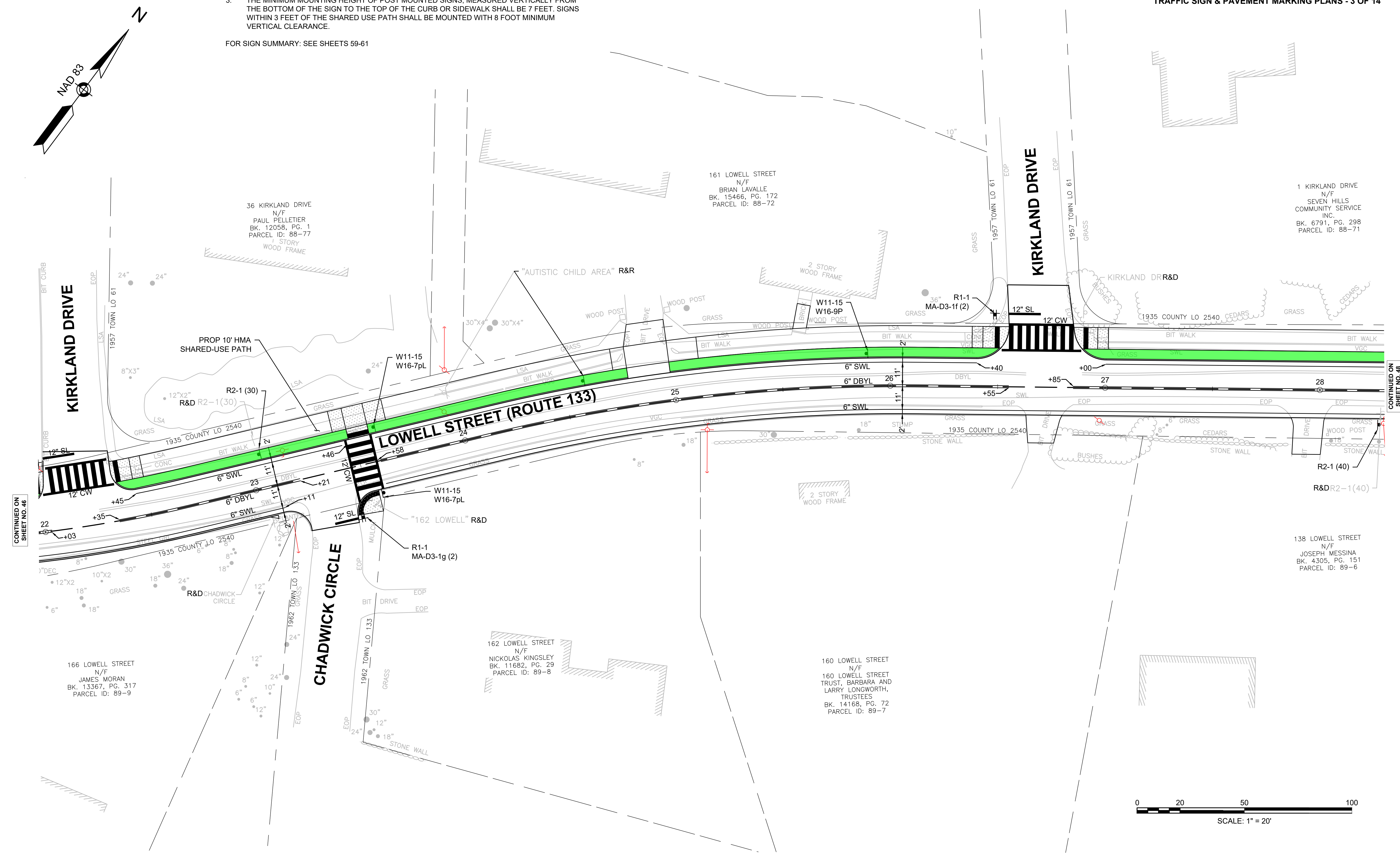
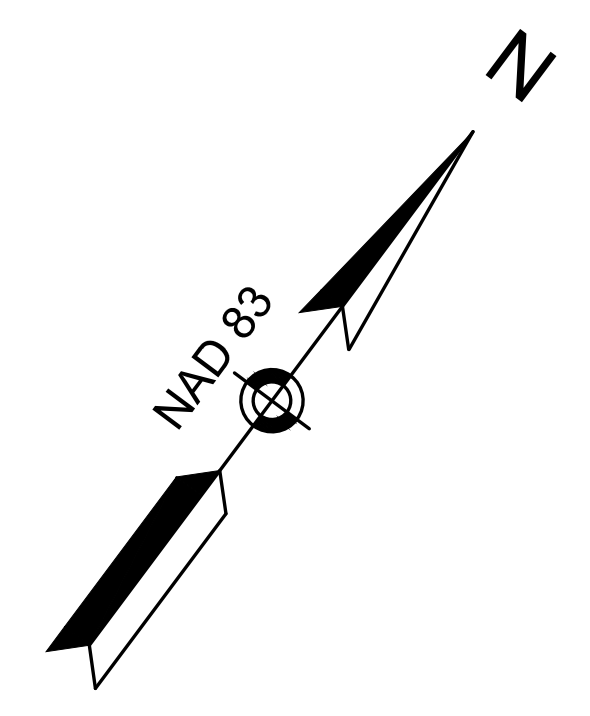
STATE	FED. AID PROJ. NO.	SHEET NO.	TOTAL SHEETS
MA	-	47	174
PROJECT FILE NO.		611957	

TRAFFIC SIGN & PAVEMENT MARKING PLANS - 3 OF 14

NOTES:

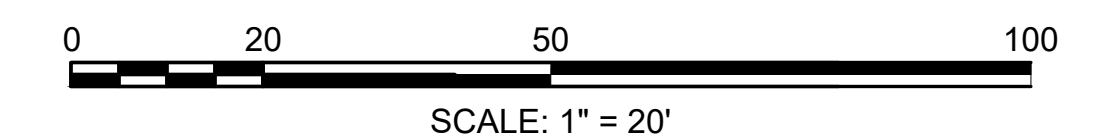
- ALL EXISTING SIGNS WITHIN THE PROJECT LIMITS SHALL BE RETAINED UNLESS INDICATED OTHERWISE ON THE DRAWINGS.
- ALL PAVEMENT MARKINGS WITHIN THE LIMITS OF WORK SHALL BE THERMOPLASTIC MATERIALS.
- THE MINIMUM MOUNTING HEIGHT OF POST MOUNTED SIGNS, MEASURED VERTICALLY FROM THE BOTTOM OF THE SIGN TO THE TOP OF THE CURB OR SIDEWALK SHALL BE 7 FEET. SIGNS WITHIN 3 FEET OF THE SHARED USE PATH SHALL BE MOUNTED WITH 8 FOOT MINIMUM VERTICAL CLEARANCE.

FOR SIGN SUMMARY: SEE SHEETS 59-61



CONTINUED ON  
SHEET NO. 46

CONTINUED ON  
SHEET NO. 48



**NOTES:**

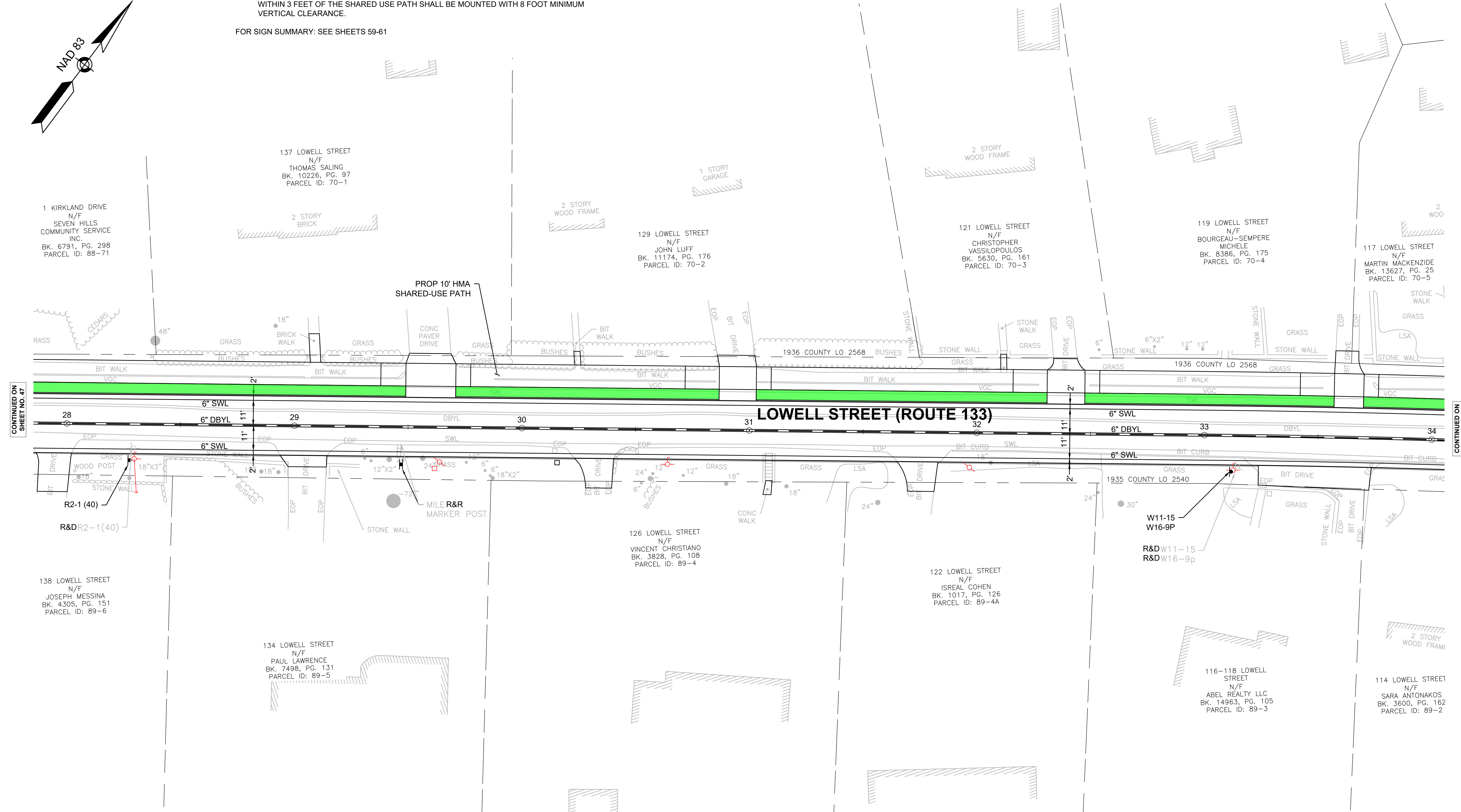
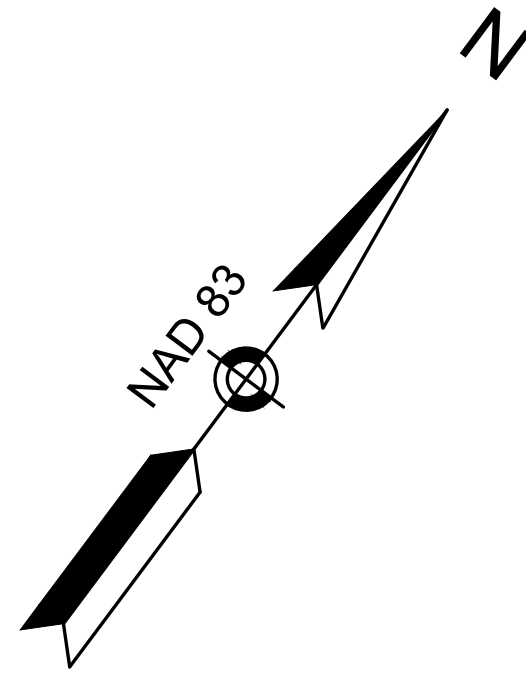
1. ALL EXISTING SIGNS WITHIN THE PROJECT LIMITS SHALL BE RETAINED UNLESS INDICATED OTHERWISE ON THE DRAWINGS.
2. ALL PAVEMENT MARKINGS WITHIN THE LIMITS OF WORK SHALL BE THERMOPLASTIC MATERIALS.
3. THE MINIMUM MOUNTING HEIGHT OF POST MOUNTED SIGNS, MEASURED VERTICALLY FROM THE BOTTOM OF THE SIGN TO THE TOP OF THE CURB OR SIDEWALK SHALL BE 7 FEET. SIGNS WITHIN 3 FEET OF THE SHARED USE PATH SHALL BE MOUNTED WITH 8 FOOT MINIMUM VERTICAL CLEARANCE.

FOR SIGN SUMMARY: SEE SHEETS 59-61

**ANDOVER  
LOWELL STREET (ROUTE 133)**

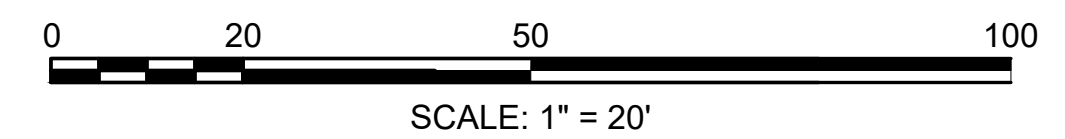
STATE	FED. AID PROJ. NO.	SHEET NO.	TOTAL SHEETS
MA	-	48	174
PROJECT FILE NO.		611957	

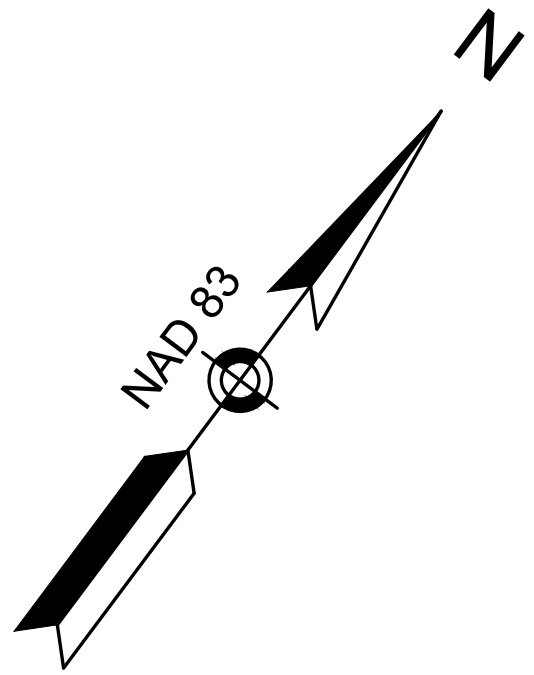
**TRAFFIC SIGN & PAVEMENT MARKING PLANS - 4 OF 14**



CONTINUED ON SHEET NO. 47

CONTINUED ON SHEET NO. 49





NOTES:

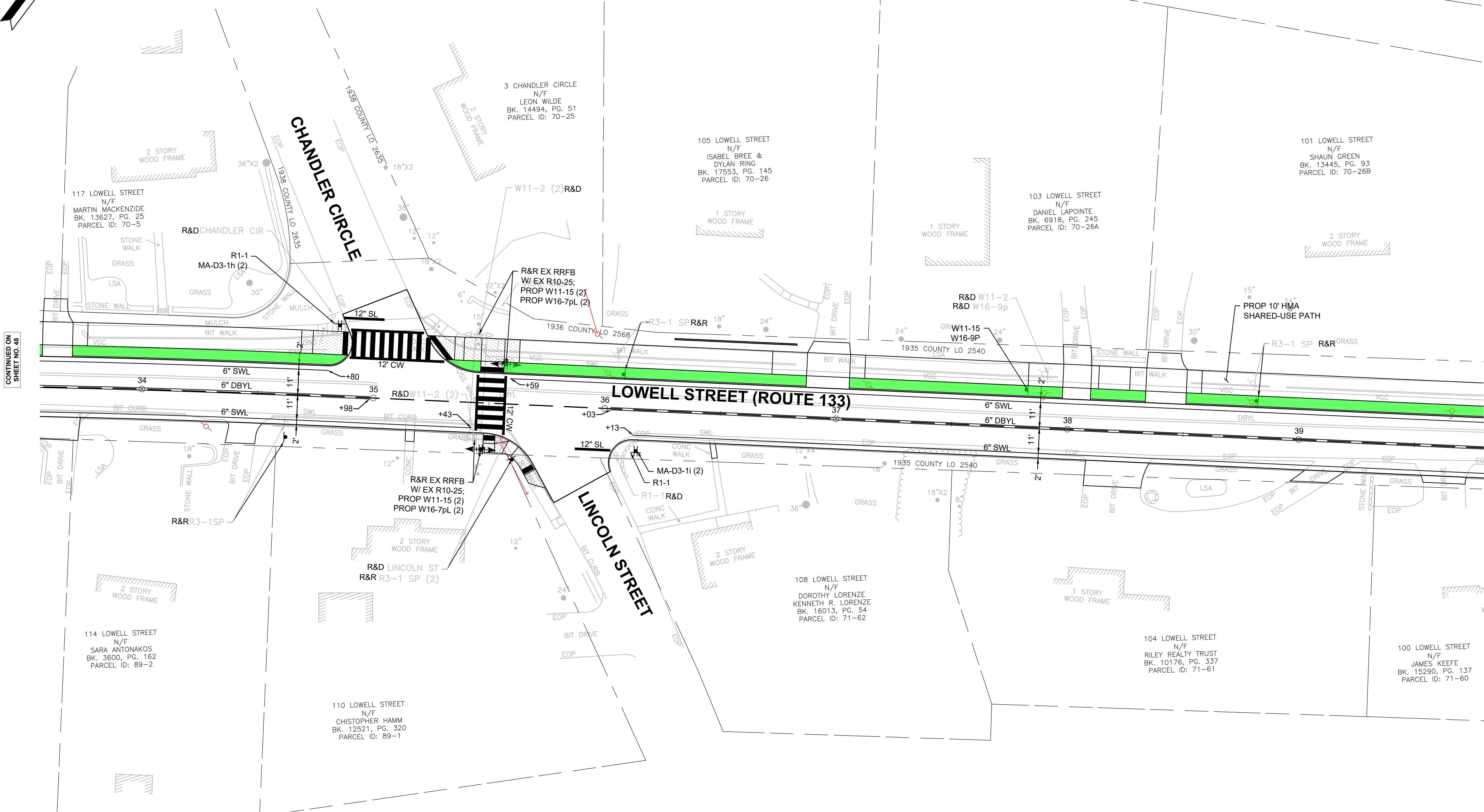
1. ALL EXISTING SIGNS WITHIN THE PROJECT LIMITS SHALL BE RETAINED UNLESS INDICATED OTHERWISE ON THE DRAWINGS.
2. ALL PAVEMENT MARKINGS WITHIN THE LIMITS OF WORK SHALL BE THERMOPLASTIC MATERIALS.
3. THE MINIMUM MOUNTING HEIGHT OF POST MOUNTED SIGNS, MEASURED VERTICALLY FROM THE BOTTOM OF THE SIGN TO THE TOP OF THE CURB OR SIDEWALK SHALL BE 7 FEET. SIGNS WITHIN 3 FEET OF THE SHARED USE PATH SHALL BE MOUNTED WITH 8 FOOT MINIMUM VERTICAL CLEARANCE.

FOR SIGN SUMMARY: SEE SHEETS 59-61

ANDOVER  
LOWELL STREET (ROUTE 133)

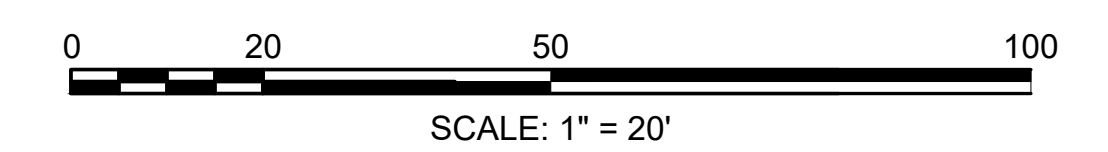
STATE	FED. AID PROJ. NO.	SHEET NO.	TOTAL SHEETS
MA	-	49	174
PROJECT FILE NO.		611957	

TRAFFIC SIGN & PAVEMENT MARKING PLANS - 5 OF 14



CONTINUED ON  
SHEET NO. 48

CONTINUED ON  
SHEET NO. 50



**ANDOVER  
LOWELL STREET (ROUTE 133)**

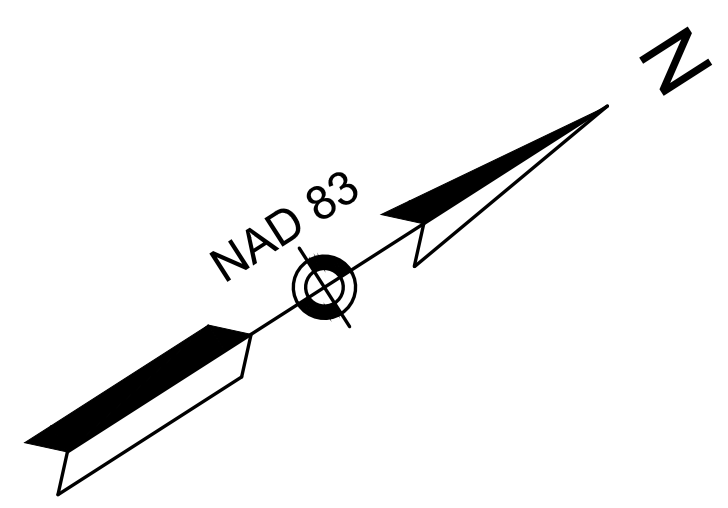
STATE	FED. AID PROJ. NO.	SHEET NO.	TOTAL SHEETS
MA	-	50	174
PROJECT FILE NO.		611957	

**TRAFFIC SIGN & PAVEMENT MARKING PLANS - 6 OF 14**

**NOTES:**

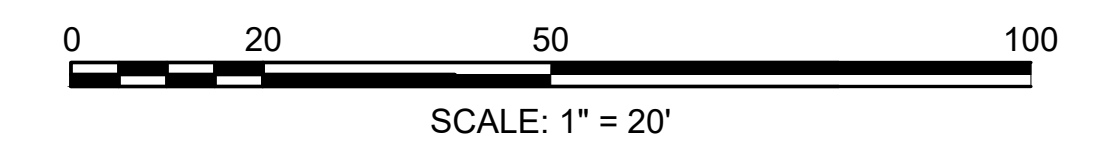
1. ALL EXISTING SIGNS WITHIN THE PROJECT LIMITS SHALL BE RETAINED UNLESS INDICATED OTHERWISE ON THE DRAWINGS.
2. ALL PAVEMENT MARKINGS WITHIN THE LIMITS OF WORK SHALL BE THERMOPLASTIC MATERIALS.
3. THE MINIMUM MOUNTING HEIGHT OF POST MOUNTED SIGNS, MEASURED VERTICALLY FROM THE BOTTOM OF THE SIGN TO THE TOP OF THE CURB OR SIDEWALK SHALL BE 7 FEET. SIGNS WITHIN 3 FEET OF THE SHARED USE PATH SHALL BE MOUNTED WITH 8 FOOT MINIMUM VERTICAL CLEARANCE.

FOR SIGN SUMMARY: SEE SHEETS 59-61



CONTINUED ON  
SHEET NO. 49

CONTINUED ON  
SHEET NO. 51



**NOTES:**

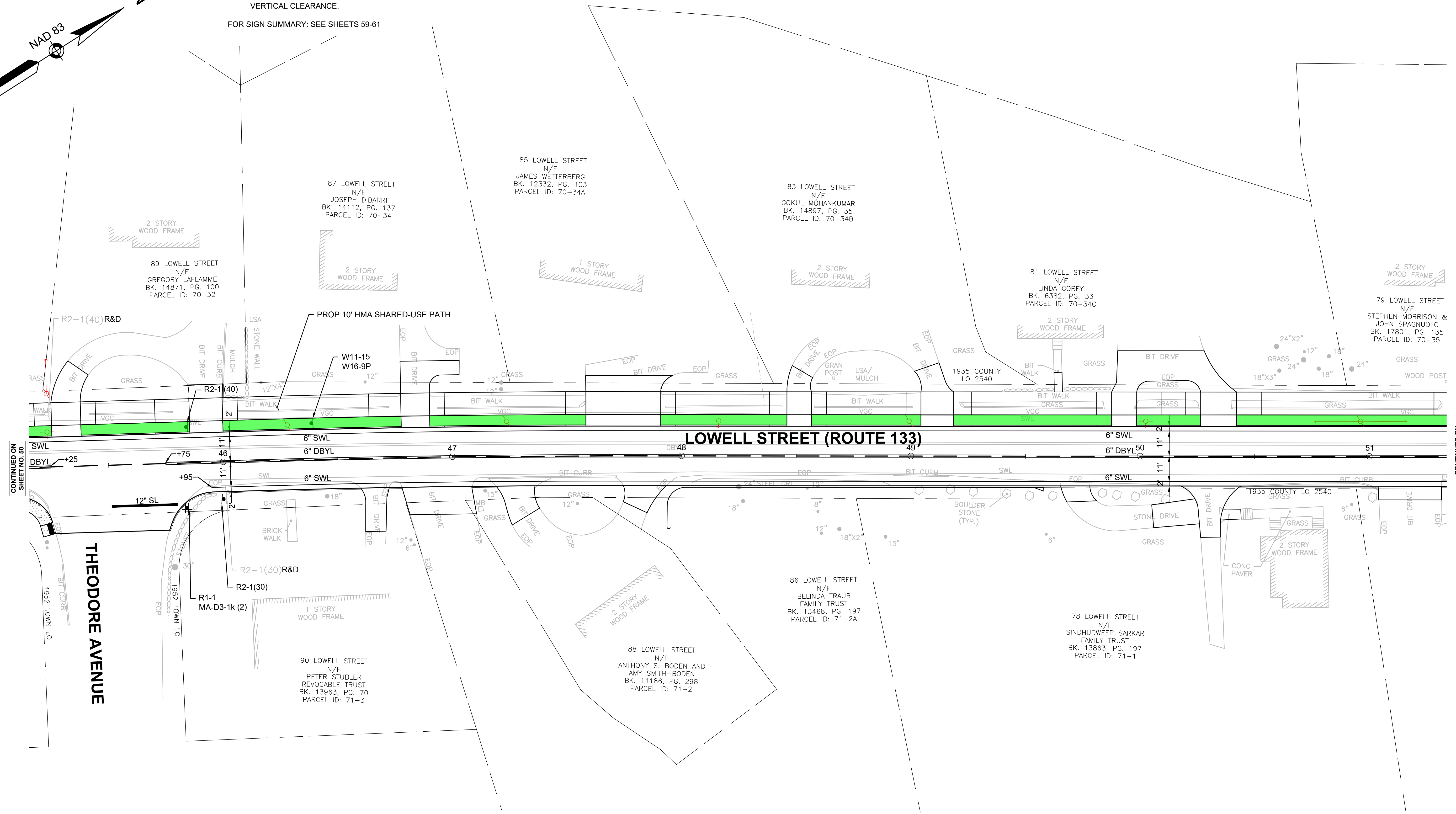
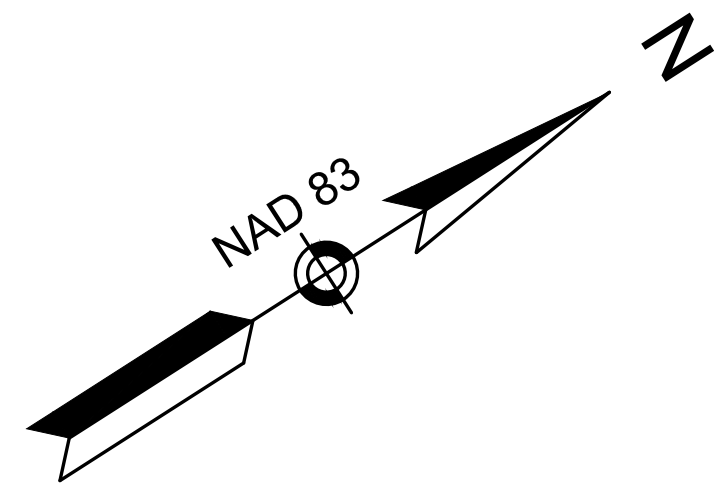
1. ALL EXISTING SIGNS WITHIN THE PROJECT LIMITS SHALL BE RETAINED UNLESS INDICATED OTHERWISE ON THE DRAWINGS.
2. ALL PAVEMENT MARKINGS WITHIN THE LIMITS OF WORK SHALL BE THERMOPLASTIC MATERIALS.
3. THE MINIMUM MOUNTING HEIGHT OF POST MOUNTED SIGNS, MEASURED VERTICALLY FROM THE BOTTOM OF THE SIGN TO THE TOP OF THE CURB OR SIDEWALK SHALL BE 7 FEET. SIGNS WITHIN 3 FEET OF THE SHARED USE PATH SHALL BE MOUNTED WITH 8 FOOT MINIMUM VERTICAL CLEARANCE.

FOR SIGN SUMMARY: SEE SHEETS 59-61

**ANDOVER  
LOWELL STREET (ROUTE 133)**

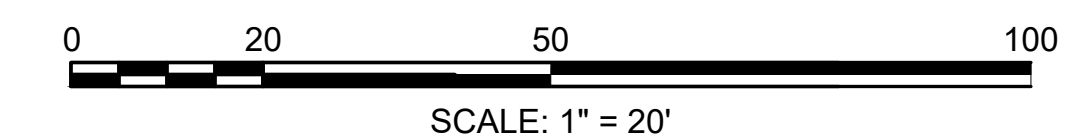
STATE	FED. AID PROJ. NO.	SHEET NO.	TOTAL SHEETS
MA	-	51	174
PROJECT FILE NO.		611957	

TRAFFIC SIGN & PAVEMENT MARKING PLANS - 7 OF 14



CONTINUED ON SHEET NO. 50

CONTINUED ON SHEET NO. 52



**NOTES:**

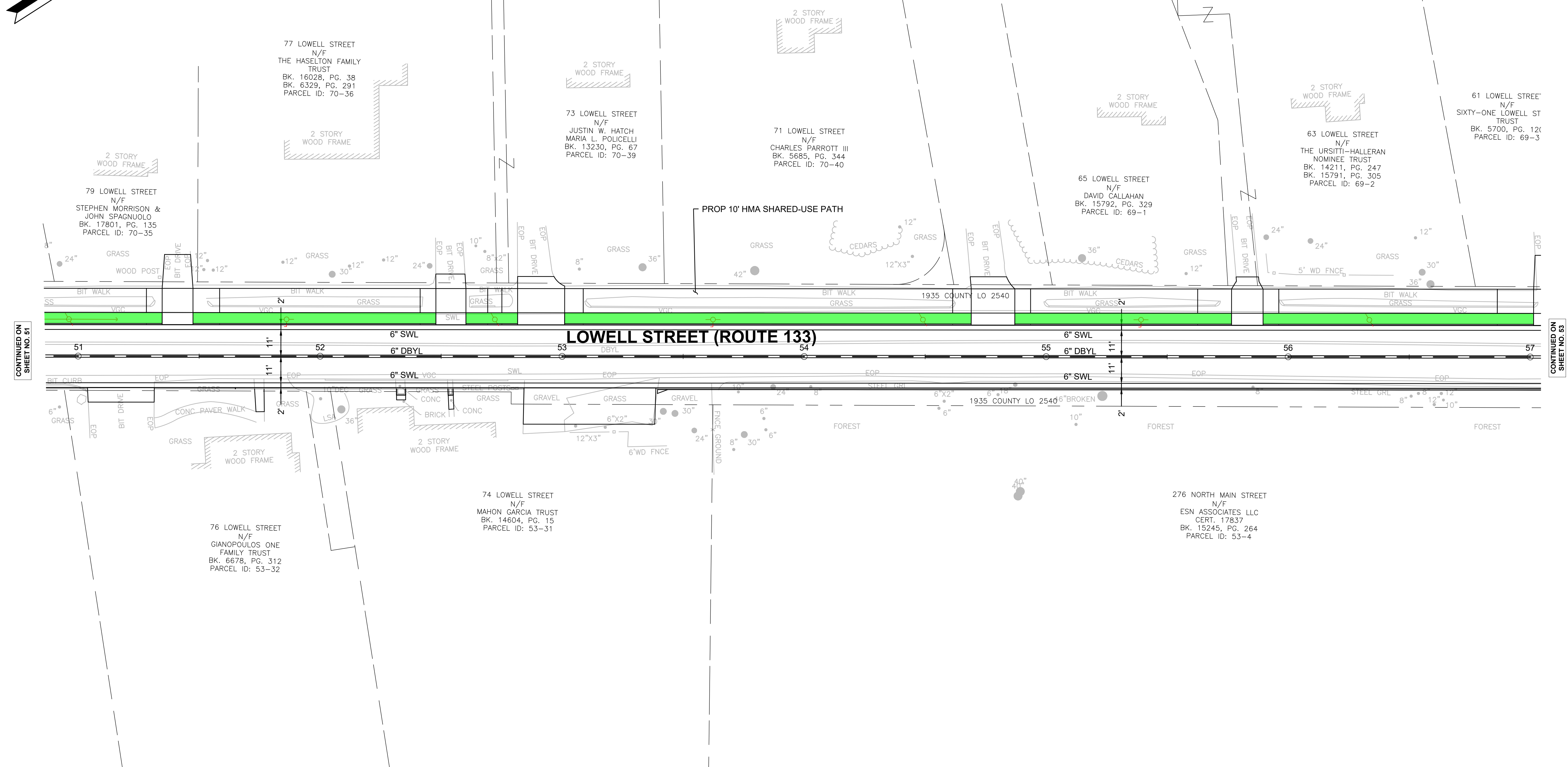
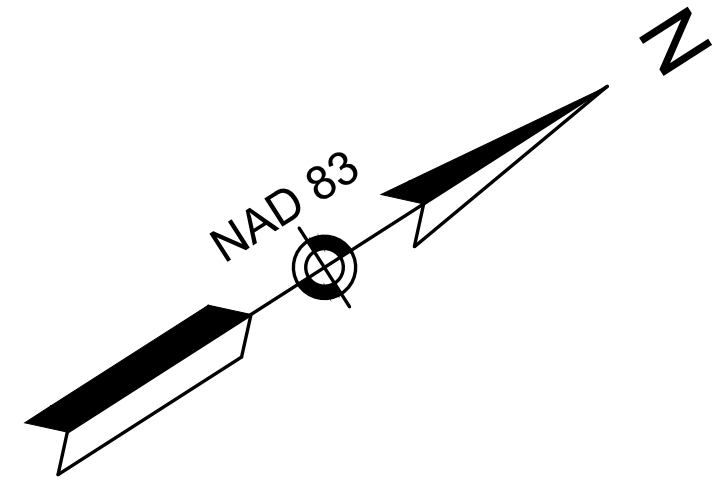
1. ALL EXISTING SIGNS WITHIN THE PROJECT LIMITS SHALL BE RETAINED UNLESS INDICATED OTHERWISE ON THE DRAWINGS.
2. ALL PAVEMENT MARKINGS WITHIN THE LIMITS OF WORK SHALL BE THERMOPLASTIC MATERIALS.
3. THE MINIMUM MOUNTING HEIGHT OF POST MOUNTED SIGNS, MEASURED VERTICALLY FROM THE BOTTOM OF THE SIGN TO THE TOP OF THE CURB OR SIDEWALK SHALL BE 7 FEET. SIGNS WITHIN 3 FEET OF THE SHARED USE PATH SHALL BE MOUNTED WITH 8 FOOT MINIMUM VERTICAL CLEARANCE.

FOR SIGN SUMMARY: SEE SHEETS 59-61

**ANDOVER  
LOWELL STREET (ROUTE 133)**

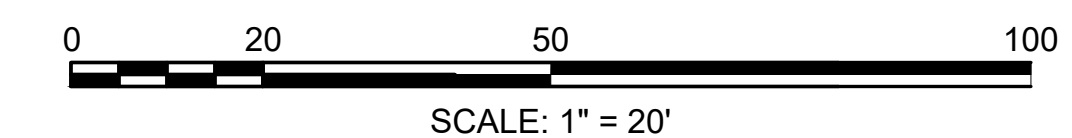
STATE	FED. AID PROJ. NO.	SHEET NO.	TOTAL SHEETS
MA	-	52	174
PROJECT FILE NO.		611957	

TRAFFIC SIGN & PAVEMENT MARKING PLANS - 8 OF 14



CONTINUED ON  
SHEET NO. 51

CONTINUED ON  
SHEET NO. 53



**ANDOVER  
LOWELL STREET (ROUTE 133)**

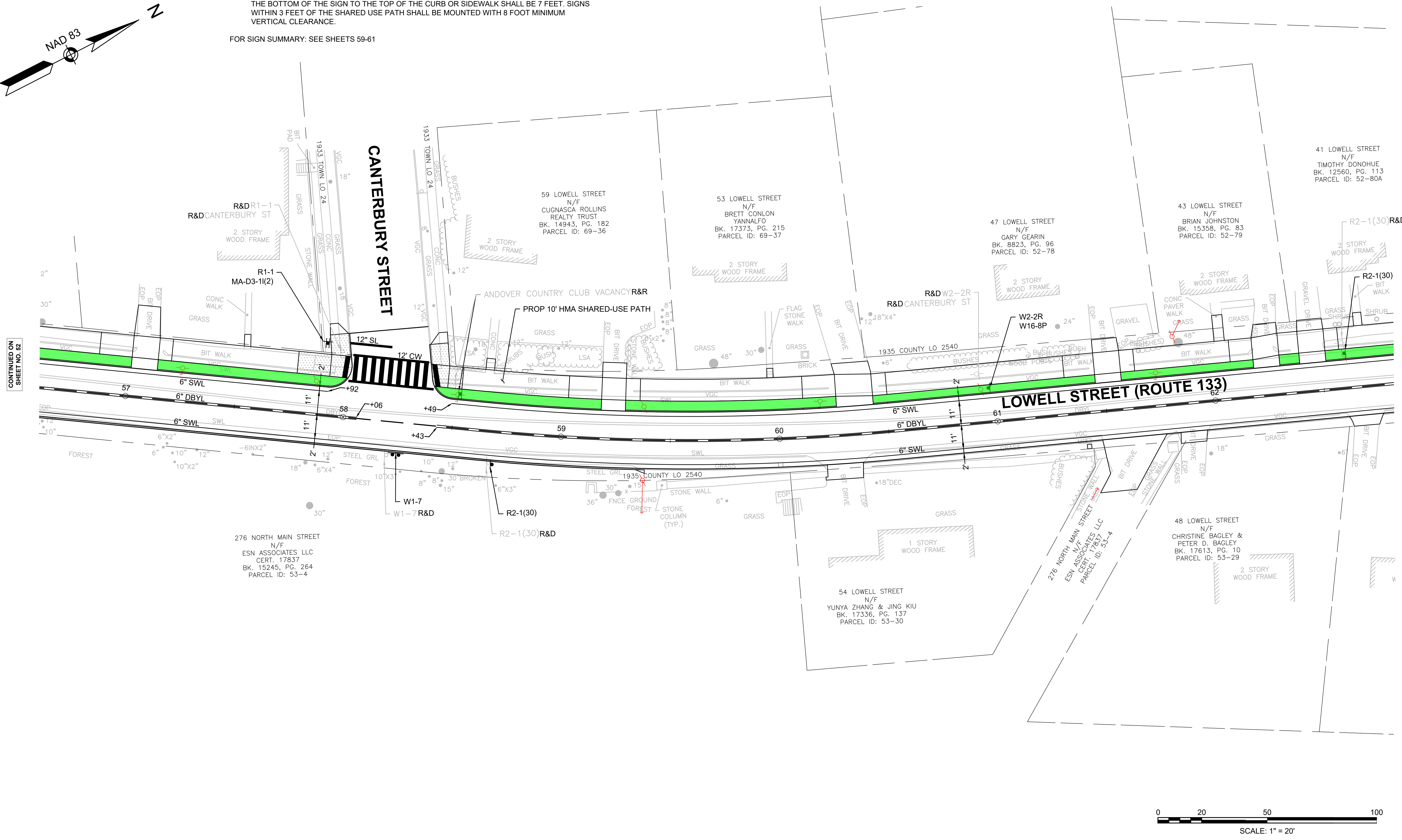
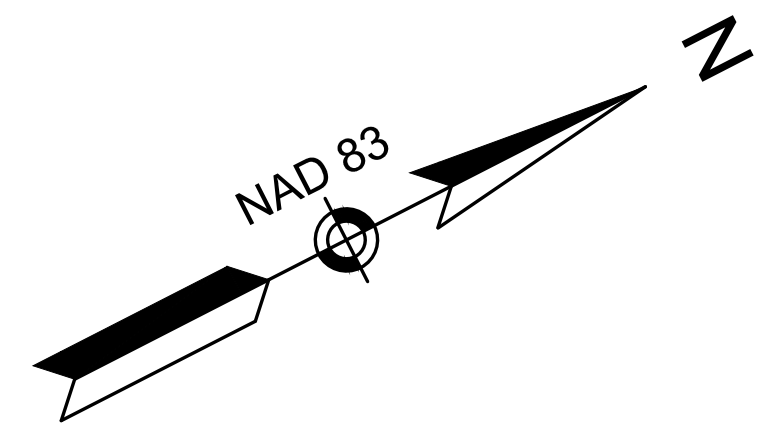
STATE	FED. AID PROJ. NO.	SHEET NO.	TOTAL SHEETS
MA	-	53	174
PROJECT FILE NO.		611957	

**TRAFFIC SIGN & PAVEMENT MARKING PLANS - 9 OF 14**

**NOTES:**

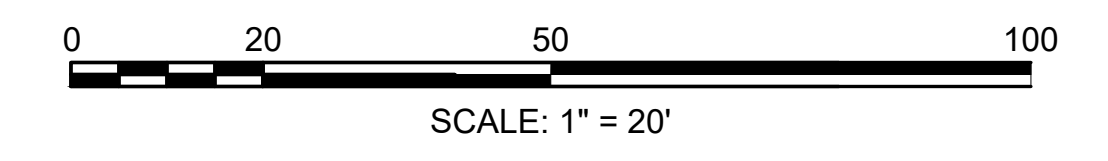
1. ALL EXISTING SIGNS WITHIN THE PROJECT LIMITS SHALL BE RETAINED UNLESS INDICATED OTHERWISE ON THE DRAWINGS.
2. ALL PAVEMENT MARKINGS WITHIN THE LIMITS OF WORK SHALL BE THERMOPLASTIC MATERIALS.
3. THE MINIMUM MOUNTING HEIGHT OF POST MOUNTED SIGNS, MEASURED VERTICALLY FROM THE BOTTOM OF THE SIGN TO THE TOP OF THE CURB OR SIDEWALK SHALL BE 7 FEET. SIGNS WITHIN 3 FEET OF THE SHARED USE PATH SHALL BE MOUNTED WITH 8 FOOT MINIMUM VERTICAL CLEARANCE.

FOR SIGN SUMMARY: SEE SHEETS 59-61



CONTINUED ON SHEET NO. 52

CONTINUED ON SHEET NO. 54



ANDOVER  
LOWELL STREET (ROUTE 133)

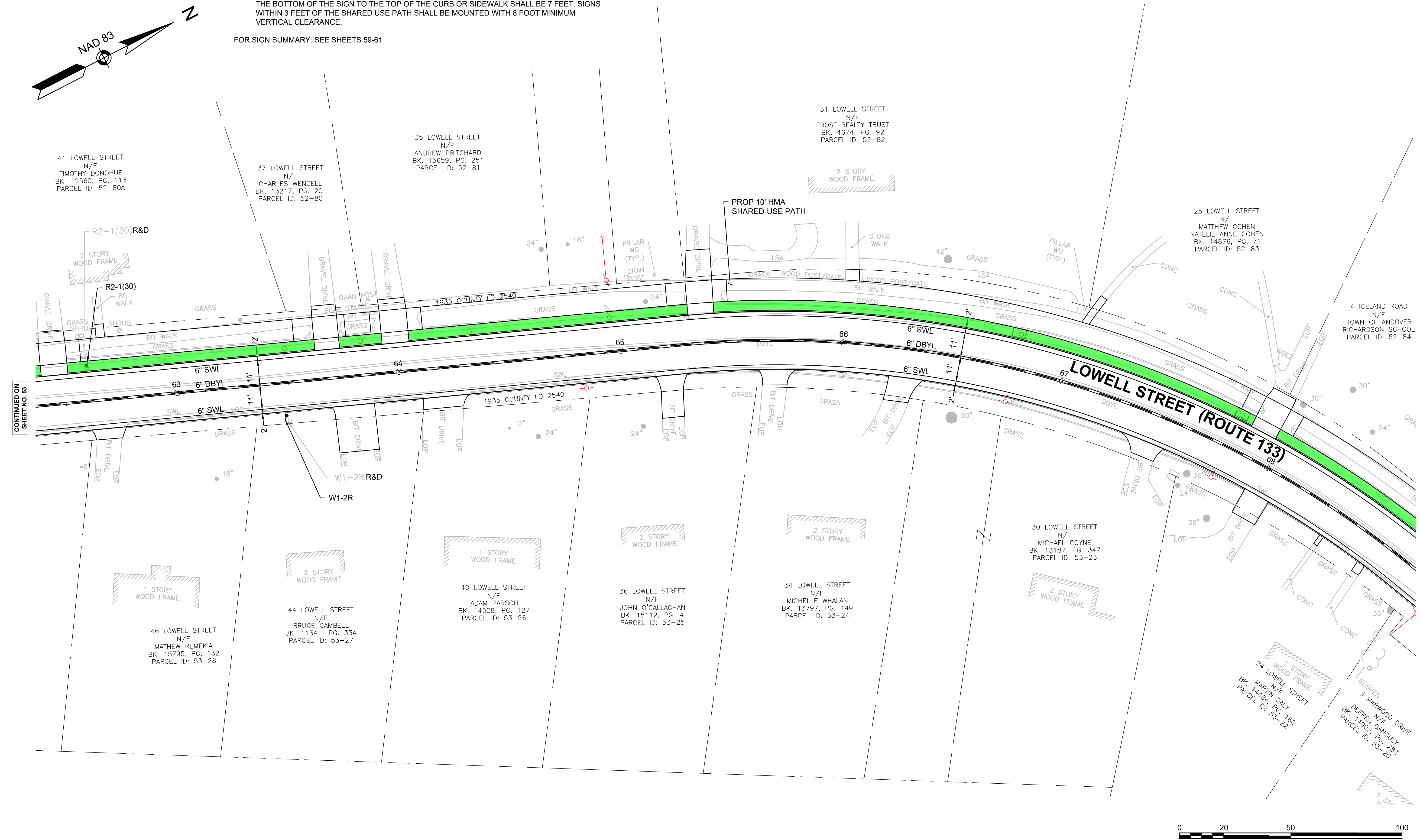
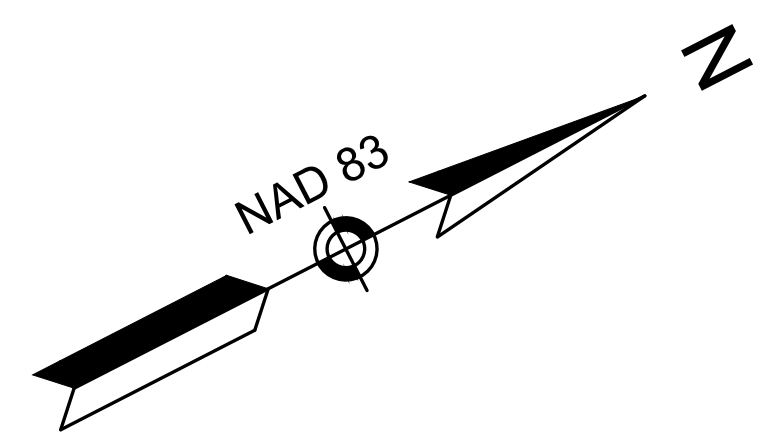
STATE	FED. AID PROJ. NO.	SHEET NO.	TOTAL SHEETS
MA	-	54	174
PROJECT FILE NO.		611957	

TRAFFIC SIGN & PAVEMENT MARKING PLANS - 10 OF 14

NOTES:

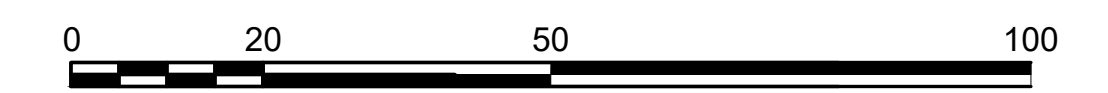
1. ALL EXISTING SIGNS WITHIN THE PROJECT LIMITS SHALL BE RETAINED UNLESS INDICATED OTHERWISE ON THE DRAWINGS.
2. ALL PAVEMENT MARKINGS WITHIN THE LIMITS OF WORK SHALL BE THERMOPLASTIC MATERIALS.
3. THE MINIMUM MOUNTING HEIGHT OF POST MOUNTED SIGNS, MEASURED VERTICALLY FROM THE BOTTOM OF THE SIGN TO THE TOP OF THE CURB OR SIDEWALK SHALL BE 7 FEET. SIGNS WITHIN 3 FEET OF THE SHARED USE PATH SHALL BE MOUNTED WITH 8 FOOT MINIMUM VERTICAL CLEARANCE.

FOR SIGN SUMMARY: SEE SHEETS 59-61



CONTINUED ON SHEET NO. 53

CONTINUED ON SHEET NO. 55



SCALE: 1" = 20'



**EXISTING D6/D8 SIGNS**

**ANDOVER  
LOWELL STREET (ROUTE 133)**

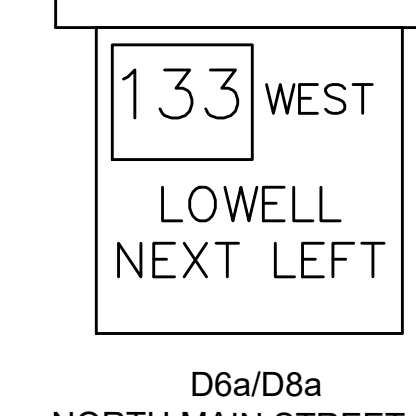
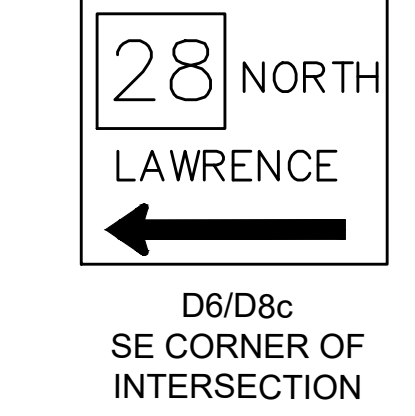
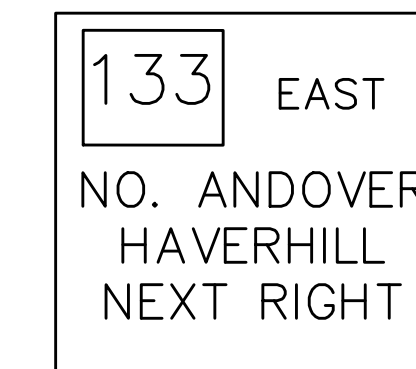
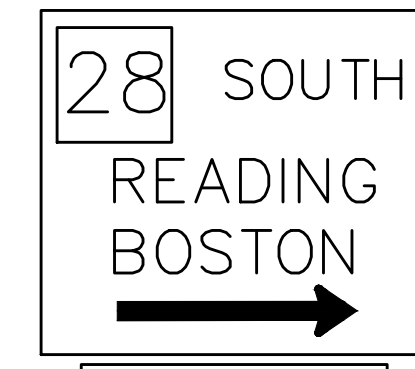
STATE	FED. AID PROJ. NO.	SHEET NO.	TOTAL SHEETS
MA	-	56	174
PROJECT FILE NO.		611957	

TRAFFIC SIGN & PAVEMENT MARKING PLANS - 12 OF 14

**NOTES:**

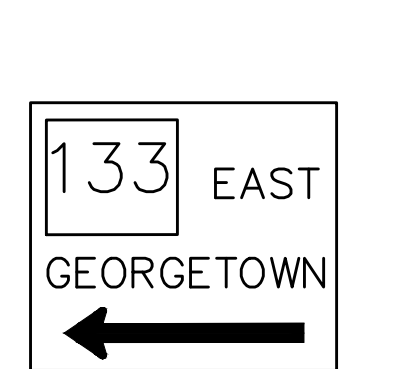
- ALL EXISTING SIGNS WITHIN THE PROJECT LIMITS SHALL BE RETAINED UNLESS INDICATED OTHERWISE ON THE DRAWINGS.
- ALL PAVEMENT MARKINGS WITHIN THE LIMITS OF WORK SHALL BE THERMOPLASTIC MATERIALS.
- THE MINIMUM MOUNTING HEIGHT OF POST MOUNTED SIGNS, MEASURED VERTICALLY FROM THE BOTTOM OF THE SIGN TO THE TOP OF THE CURB OR SIDEWALK SHALL BE 7 FEET. SIGNS WITHIN 3 FEET OF THE SHARED USE PATH SHALL BE MOUNTED WITH 8 FOOT MINIMUM VERTICAL CLEARANCE.
- W23-2 SIGNS SHALL BE REMOVED WHEN THE TRAFFIC PATTERN RETURNS TO NORMAL, WHEN THE CHANGED PATTERN IS NO LONGER NEW, OR WITHIN 6 MONTHS AFTER CONSTRUCTION IS COMPLETE (MUTCD).

FOR SIGN SUMMARY: SEE SHEETS 59-61

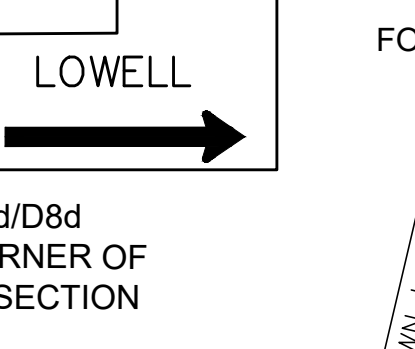
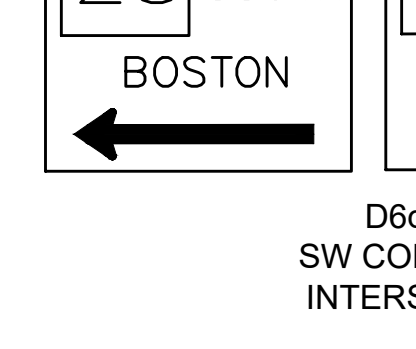
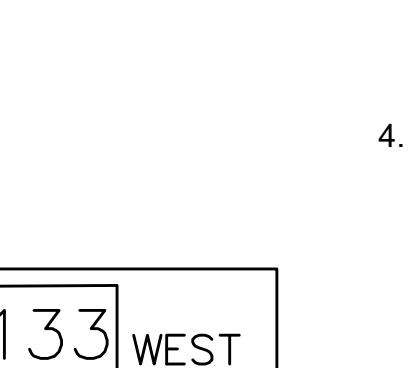
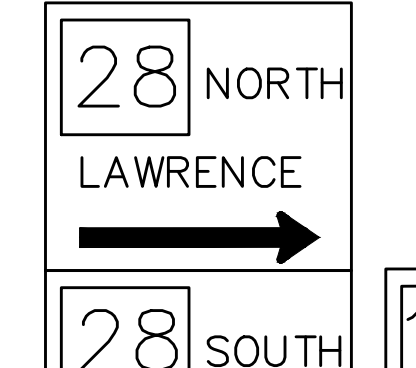


D6/D8c  
SE CORNER OF  
INTERSECTION

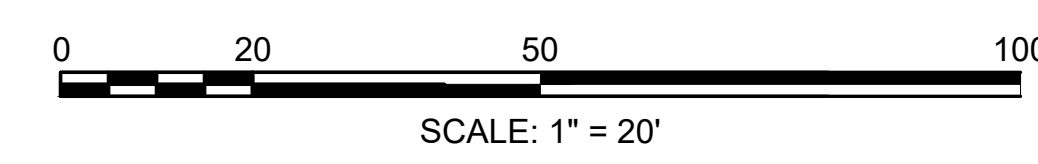
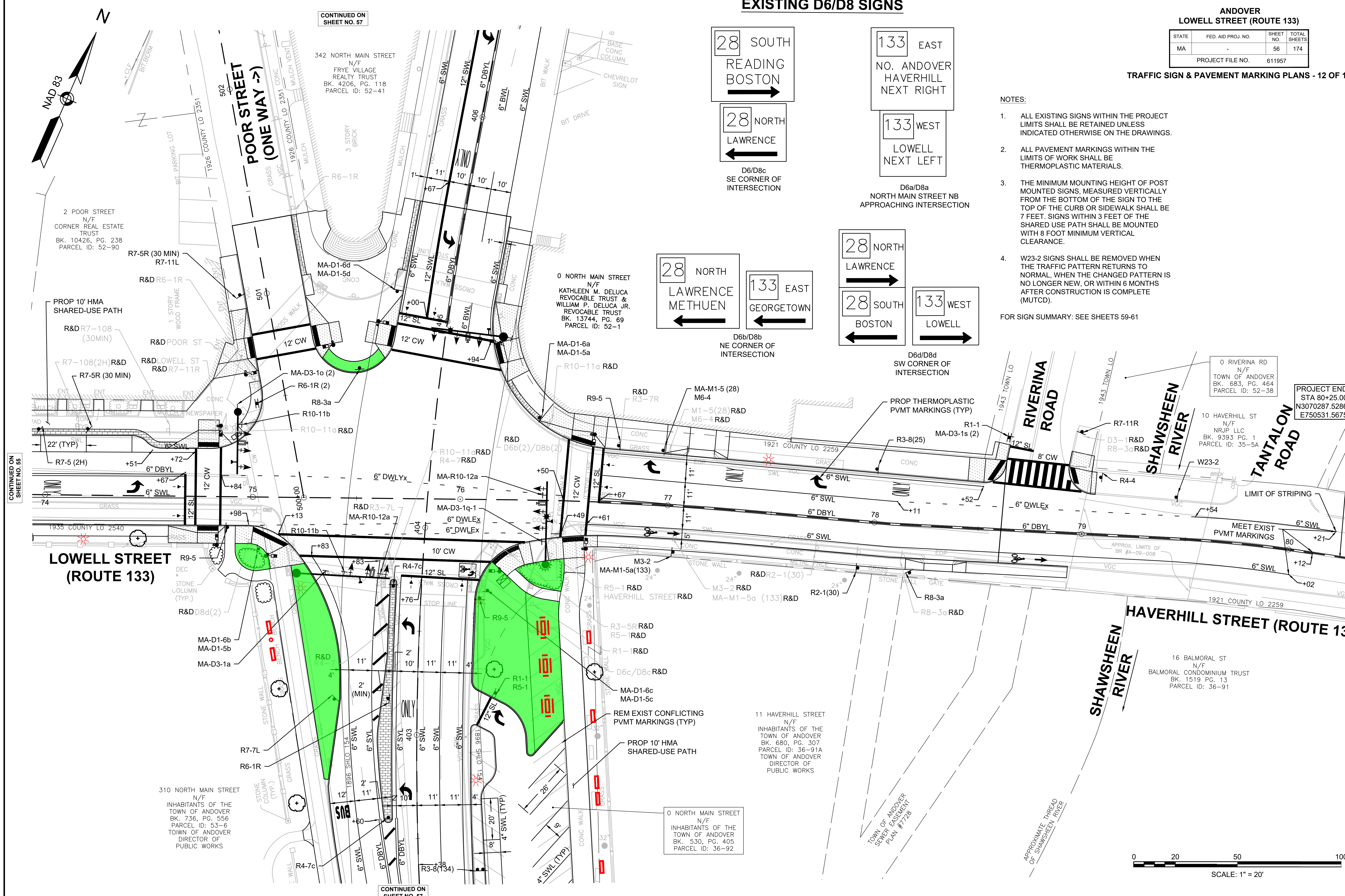
D6a/D8a  
NORTH MAIN STREET NB  
APPROACHING INTERSECTION



D6b/D8b  
NE CORNER OF  
INTERSECTION



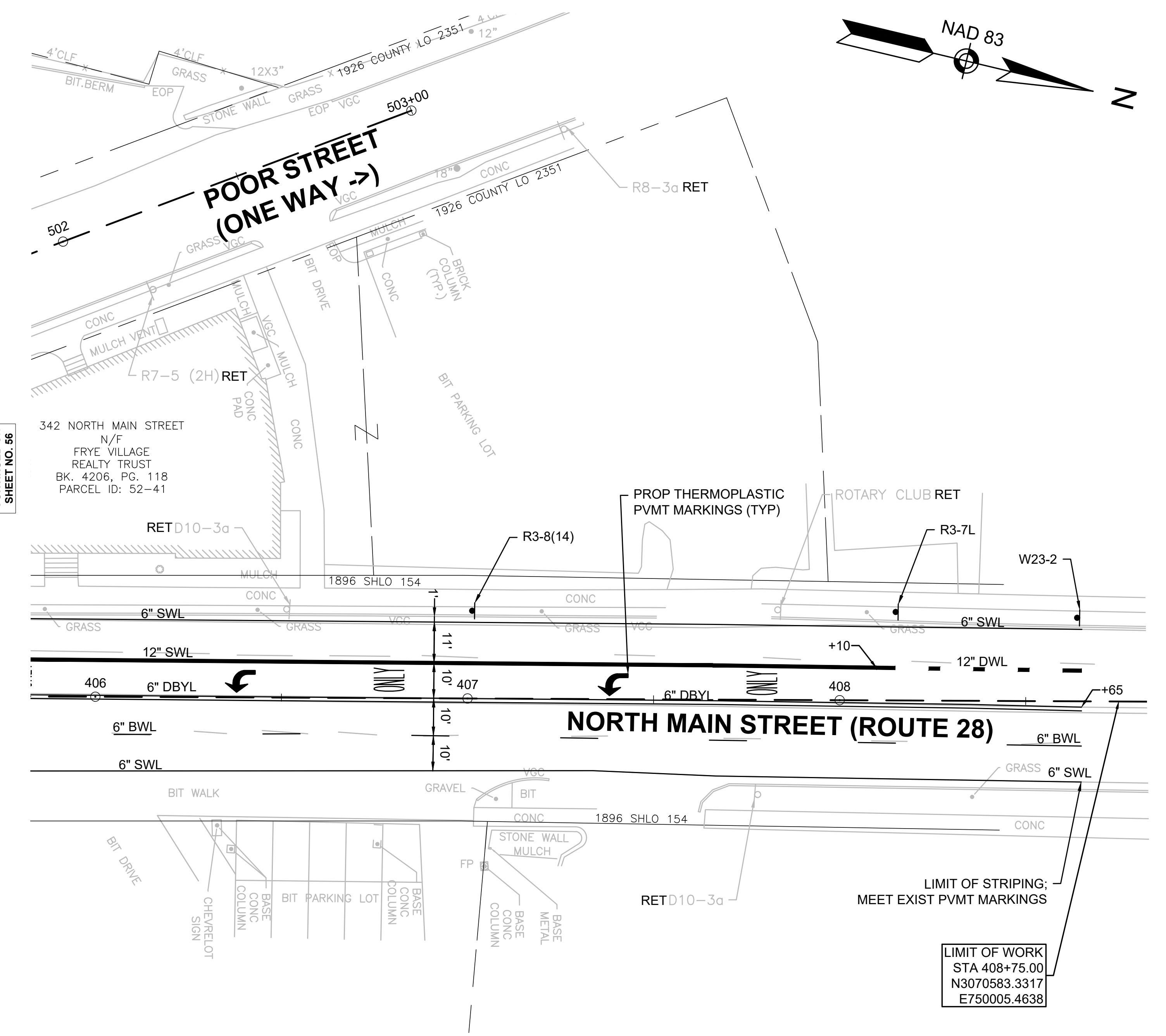
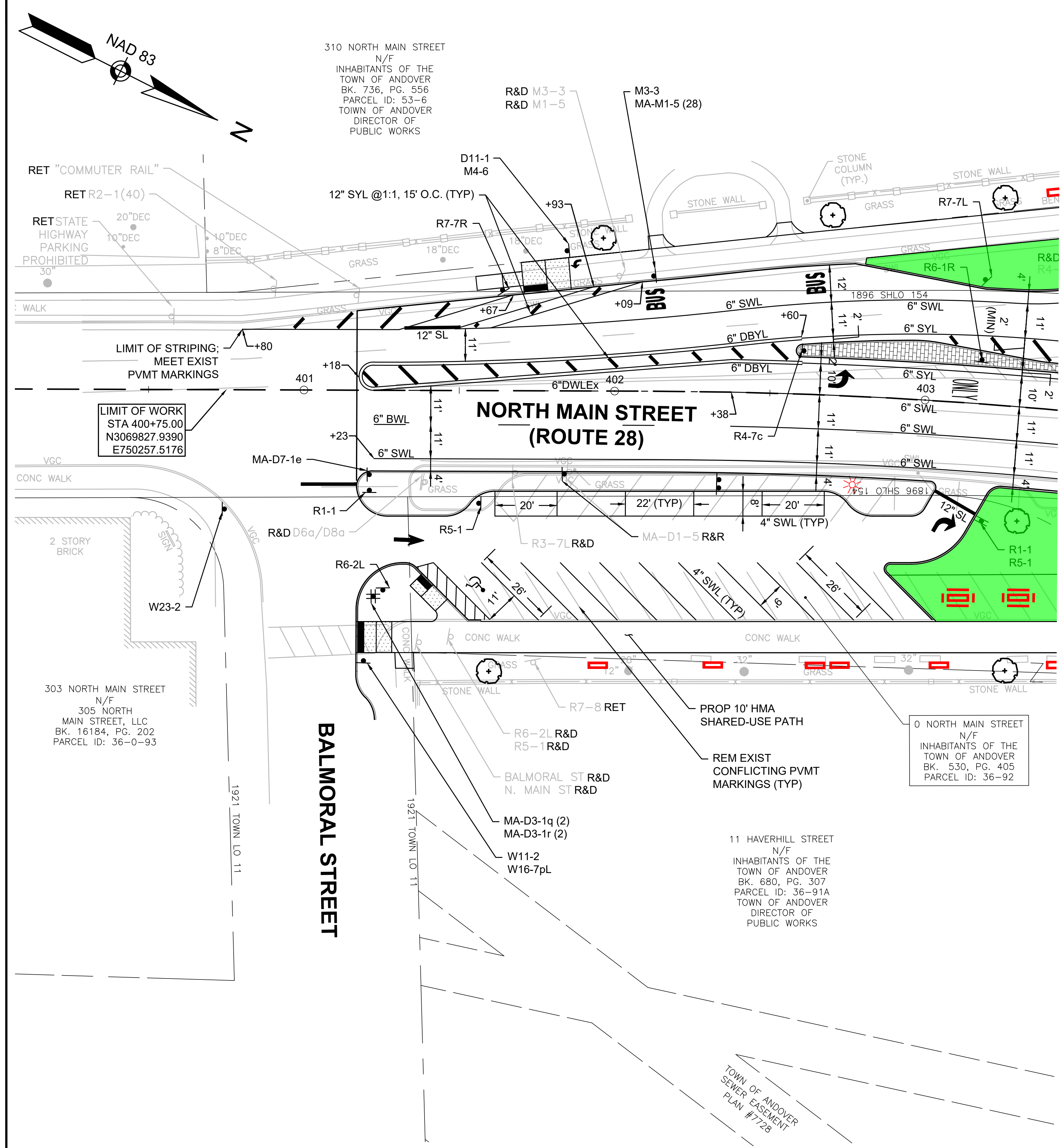
D6d/D8d  
SW CORNER OF  
INTERSECTION



ANDOVER  
LOWELL STREET (ROUTE 133)

STATE	FED. AID PROJ. NO.	SHEET NO.	TOTAL SHEETS
MA	-	57	174
PROJECT FILE NO.		611957	

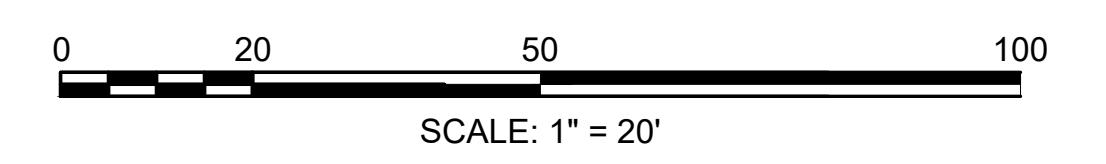
TRAFFIC SIGN & PAVEMENT MARKING PLANS - 13 OF 14



NOTES:

1. ALL EXISTING SIGNS WITHIN THE PROJECT LIMITS SHALL BE RETAINED UNLESS INDICATED OTHERWISE ON THE DRAWINGS.
2. ALL PAVEMENT MARKINGS WITHIN THE LIMITS OF WORK SHALL BE THERMOPLASTIC MATERIALS.
3. THE MINIMUM MOUNTING HEIGHT OF POST MOUNTED SIGNS, MEASURED VERTICALLY FROM THE BOTTOM OF THE SIGN TO THE TOP OF THE CURB OR SIDEWALK SHALL BE 7 FEET. SIGNS WITHIN 3 FEET OF THE SHARED USE PATH SHALL BE MOUNTED WITH 8 FOOT MINIMUM VERTICAL CLEARANCE.
4. W23-2 SIGNS SHALL BE REMOVED WHEN THE TRAFFIC PATTERN RETURNS TO NORMAL, WHEN THE CHANGED PATTERN IS NO LONGER NEW, OR WITHIN 6 MONTHS AFTER CONSTRUCTION IS COMPLETE (MUTCD).

FOR SIGN SUMMARY: SEE SHEETS 59-61



NOTES:

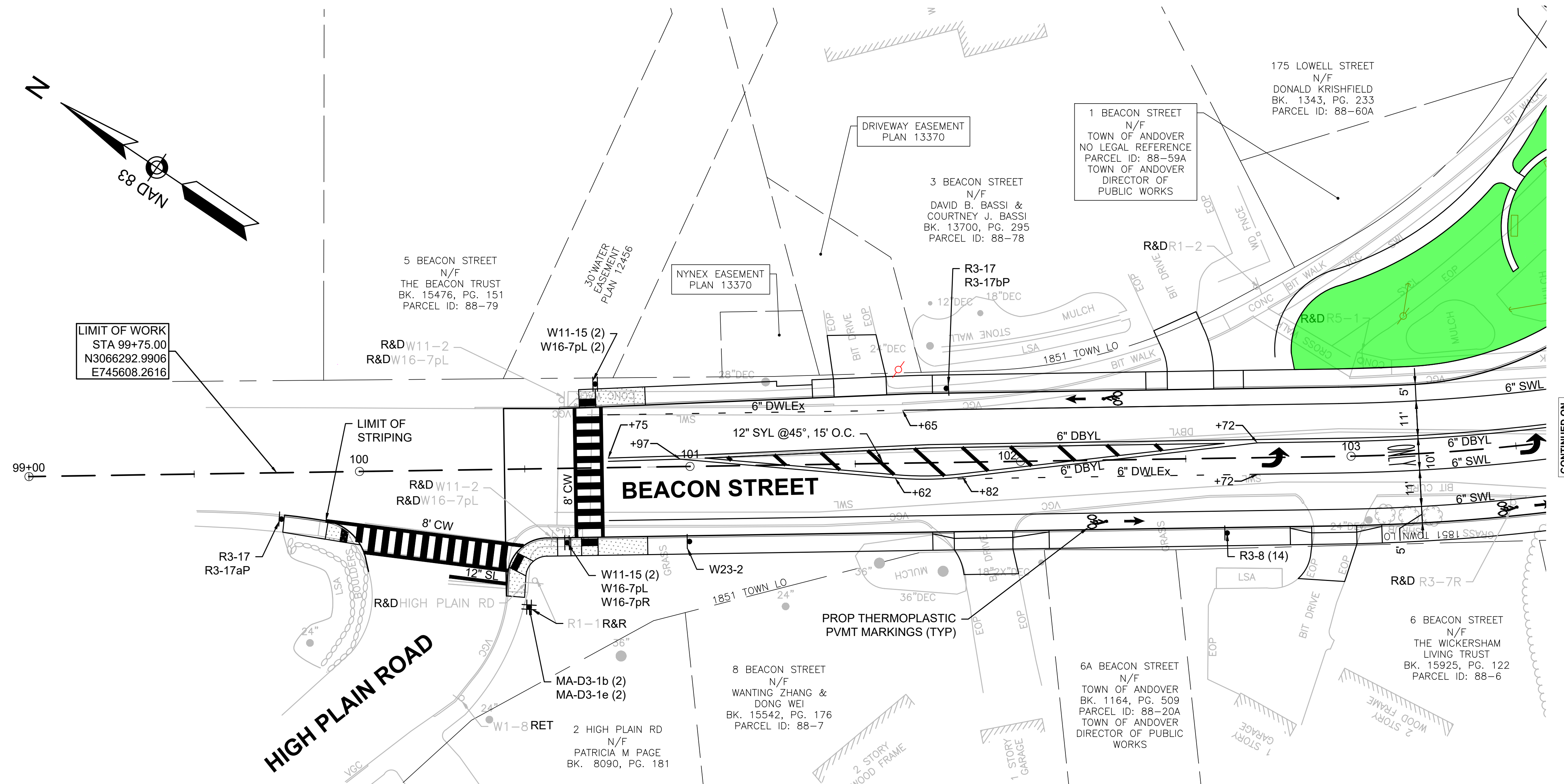
1. ALL EXISTING SIGNS WITHIN THE PROJECT LIMITS SHALL BE RETAINED UNLESS INDICATED OTHERWISE ON THE DRAWINGS.
2. ALL PAVEMENT MARKINGS WITHIN THE LIMITS OF WORK SHALL BE THERMOPLASTIC MATERIALS.
3. THE MINIMUM MOUNTING HEIGHT OF POST MOUNTED SIGNS, MEASURED VERTICALLY FROM THE BOTTOM OF THE SIGN TO THE TOP OF THE CURB OR SIDEWALK SHALL BE 7 FEET. SIGNS WITHIN 3 FEET OF THE SHARED USE PATH SHALL BE MOUNTED WITH 8 FOOT MINIMUM VERTICAL CLEARANCE.

FOR SIGN SUMMARY: SEE SHEETS 59-61

ANDOVER  
LOWELL STREET (ROUTE 133)

STATE	FED. AID PROJ. NO.	SHEET NO.	TOTAL SHEETS
MA	-	58	174
PROJECT FILE NO.		611957	

TRAFFIC SIGN & PAVEMENT MARKING PLANS - 14 OF 14



LIMIT OF WORK  
STA 99+75.00  
N3066292.9906  
E745608.2616

CONTINUED ON  
SHEET NO. 45

0 20 50 100  
SCALE: 1" = 20'