

**ELEVATION / SECTION WALL TYPE LEGEND**

**WALL TYPE 1: BRICK WALL ASSEMBLY**

- FINISH: 3 5/8" BRICK VENEER WITH ANCHORS RUNNING BOND( SEE ELEVATION SOLDIER ORIENTATION COURSES TYPE 1A)
- 2 1/2" AIR CAVITY
- 3" STONE WOOL EXTERIOR WALL INSULATION
- CONT. FULLY APPLIED AIR/VAPOR BARRIER
- 5/8" EXTERIOR GYPSUM SHEATHING
- CMU
- 2 1/2 METAL STUD
- (2) LAYERS 5/8" INTERIOR GYPSUM SHEATHING
- INTERIOR FINISH AS SCHEDULED

**WALL TYPE 2: GFRC RAINSCREEN SYSTEM (BASIS OF DESIGN)**

- GFRC RAINSCREEN PANELS
- 1 -1/2" NON-FERROUS BLACK-PAINTED CHANNEL ON INTERMITTENT ST. STL. CLIP & BOLT SUPPORT SYSTEM. PTD GALV. STEEL Z-GIRT ON PLASTIC SHIM, SEALED ALONG TOP EDGE.
- 4" RIGID MINERAL WOOL INSULATION (R-26)
- CONTINUOUS FULLY APPLIED AIR/ VAPOR BARRIER MEMBRANE
- 5/8" EXTERIOR GYPSUM SHEATHING
- CMU
- 2 1/2 METAL STUD
- (2) LAYERS 5/8" INTERIOR GYPSUM SHEATHING
- INTERIOR FINISH AS SCHEDULED

**WALL TYPE 2: TERRA COTTA RAINSCREEN SYSTEM (ALTERNATE 1)**

- 40MM / 1 1/2" TERRA COTTA PANEL ASSEMBLY ON S.S. CLIPS (SEE ELEVATION FOR TERRA COTTA TYPE. TYPE 2A: 6' 0" X 2'-8" TYPE 2B: 6' X0'- 8")
- 1 -1/2" NON-FERROUS BLACK-PAINTED CHANNEL ON INTERMITTENT ST. STL. CLIP & BOLT SUPPORT SYSTEM. PTD GALV. STEEL Z-GIRT ON PLASTIC SHIM, SEALED ALONG TOP EDGE.
- 4" RIGID MINERAL WOOL INSULATION (R-26)
- CONTINUOUS FULLY APPLIED AIR/ VAPOR BARRIER MEMBRANE
- 5/8" EXTERIOR GYPSUM SHEATHING
- CMU
- 2 1/2 METAL STUD
- (2) LAYERS 5/8" INTERIOR GYPSUM SHEATHING
- INTERIOR FINISH AS SCHEDULED

**WALL TYPE 3: METAL-FACED COMPOSITE WALL PANELS**

- METAL-FACED COMPOSITE WALL PANELS
- 1 -1/2" NON-FERROUS BLACK-PAINTED CHANNEL ON INTERMITTENT ST. STL. CLIP & BOLT SUPPORT SYSTEM. PTD GALV. STEEL Z-GIRT ON PLASTIC SHIM, SEALED ALONG TOP EDGE.
- 4" RIGID MINERAL WOOL INSULATION (R-26)
- CONTINUOUS AIR/ VAPOR BARRIER MEMBRANE
- 5/8" EXTERIOR GYPSUM SHEATHING
- CMU
- 2 1/2 METAL STUD
- (2) LAYERS 5/8" INTERIOR GYPSUM SHEATHING
- INTERIOR FINISH AS SCHEDULED

**WALL TYPE 4: CURTAIN WALL**

- KAWNEER 1600 UT (BASIS OF DESIGN)
- 3 COATS KYNAR METALLIC FINISH
- SOLARBAN 72 ACUITY #2 FOR LARGE SPANS GLAZING (IGU + FRITTED GLASS) -GL1
- INSULATING - SHADOW BOX GLASS- FRITTED GLASS (SEE ELEVATION TYPE 4A)
- GLASS ALTERNATE GUARDIAN SN68 ULTRA CLEAR IGU- FRITTED GLASS

**WALL TYPE 5: GRANITE BASE**

- FINISH: 2" CAMBRIAN BLACK FLAMED GRANITE CLADDING WITH ANCHORS (BASIS OF DESIGN)
- 2" POMPEI BASALT STONE CLADDING WITH ANCHORS (ALTERNATE 1)
- 2 1/2" AIR CAVITY
- 4" RIGID POLYISO INSULATION
- CONT. AIR/VAPOR BARRIER
- 5/8" EXTERIOR GYPSUM SHEATHING
- CMU/MISC. STL SUPPORT/ CONCRETE FOUNDATION WALL

**WINDOW TYPE W1:**

- KAWNEER 1600 UT (BASIS OF DESIGN)
- 3 COATS KYNAR METALLIC FINISH
- SOLARBAN 72 ACUITY (IGU + FRITTED GLASS) -GL2
- INSULATING - SHADOW BOX GLASS- FRITTED GLASS (SEE ELEVATION TYPE 4A)
- GLASS ALTERNATE GUARDIAN SN68 ULTRA CLEAR IGU - FRITTED GLASS
- CUSTOM PROFILE EXTENDED LEG MULLION CAP AROUND THE FRAME PERIMETER. MITER AT CORNER, TYP. TO PROJECT 6" +/- OF MASONRY FACE TYP.

**SUNSCREEN TYPE S1: ALUMINUM SUN SCREEN**

- PERFORATED ALUMINUM SUN SCREEN - COLOR TO MATCH CURTAIN WALL

**PERIMETER FOOTING ASSEMBLY TYPE F1:**

- DRAINAGE BOARD
- 2" RIGID INSULATION
- WATERPROOFING MEMBRANE
- CONCRETE FOUNDATION WALL AND FOOTING, REF. STRUCTURAL

**PARAPET TYP.**

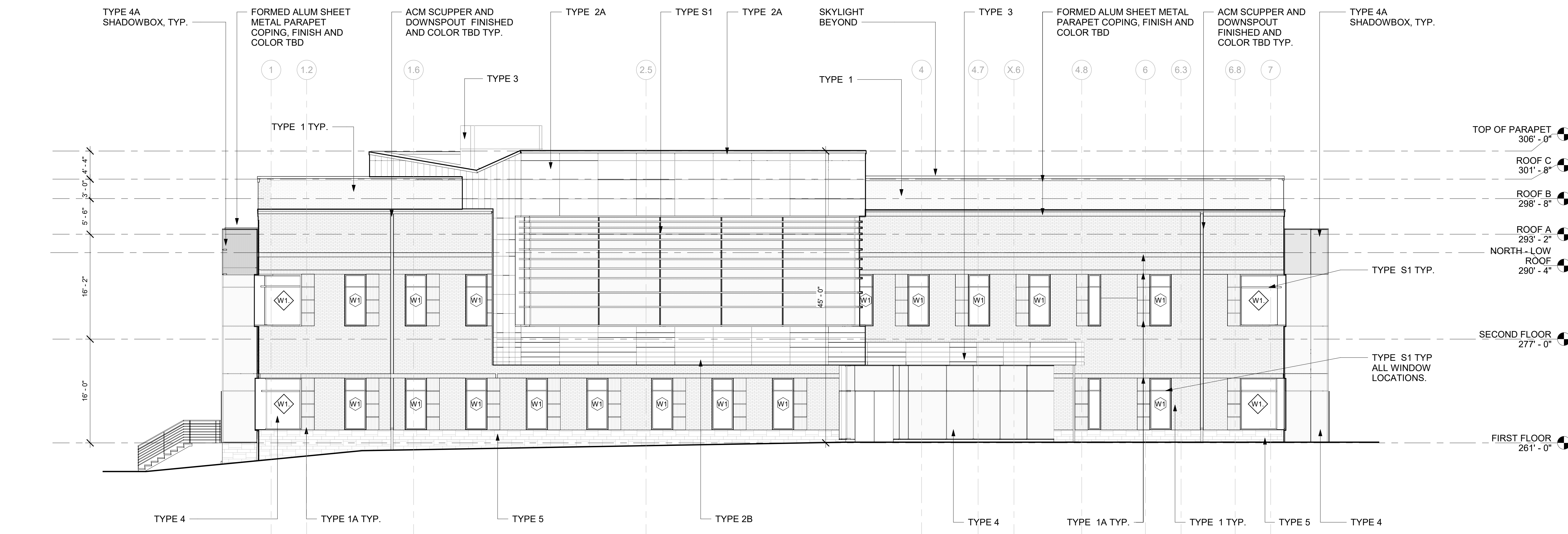
- ACM PARAPET COPING, FINISH AND COLOR TBD
- P.T. WOOD BLOCKING
- FULLY ADHERED PVC ROOFING MEMBRANE, LAP UP AND OVER PARAPET CONSTRUCTION
- METAL FRAMING
- VAPOR RETARDER
- EXTERIOR GYPSUM BOARD

**GFRC RAINSCREEN SYSTEM SOFFIT SYSTEM TYPE -JP**

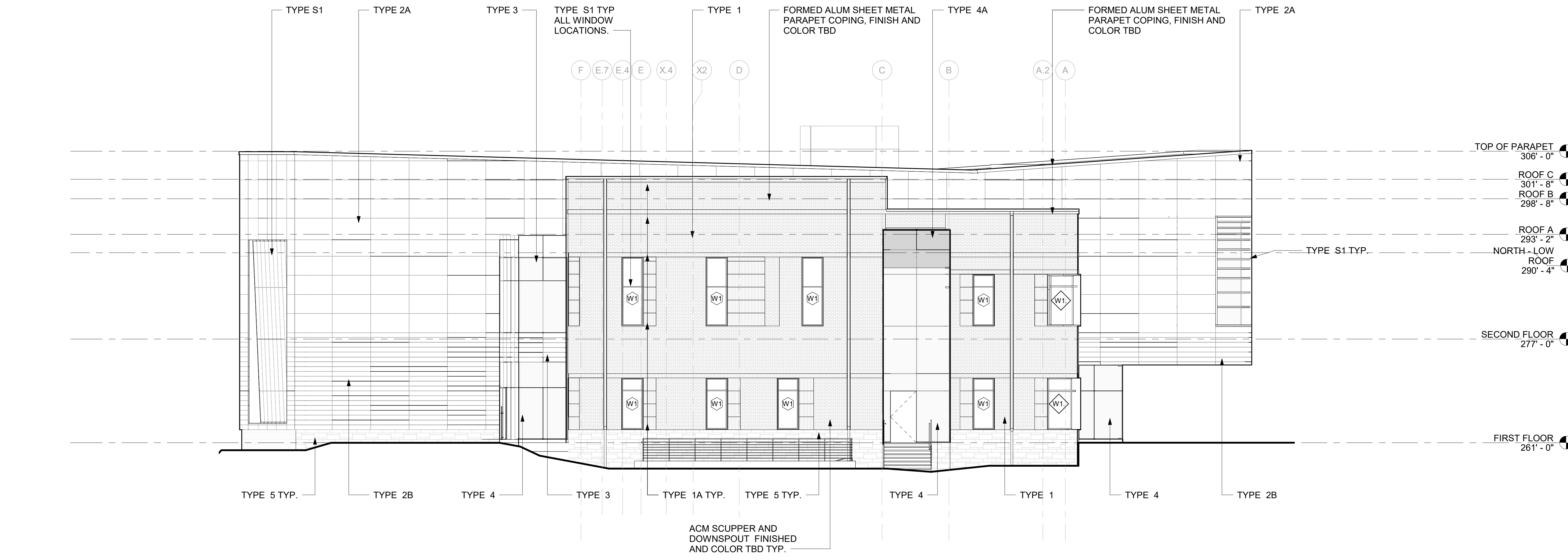
- GFRC RAINSCREEN PANELS SOFFIT
- 1 -1/2" NON-FERROUS BLACK-PAINTED CHANNEL ON INTERMITTENT ST. STL. CLIP & BOLT SUPPORT SYSTEM. PTD GALV. STEEL Z-GIRT ON PLASTIC SHIM, SEALED ALONG TOP EDGE.
- 4" RIGID POLYISO INSULATION (R-26)
- CONTINUOUS AIR/ VAPOR BARRIER MEMBRANE
- METAL FRAMING

**NOTE:**

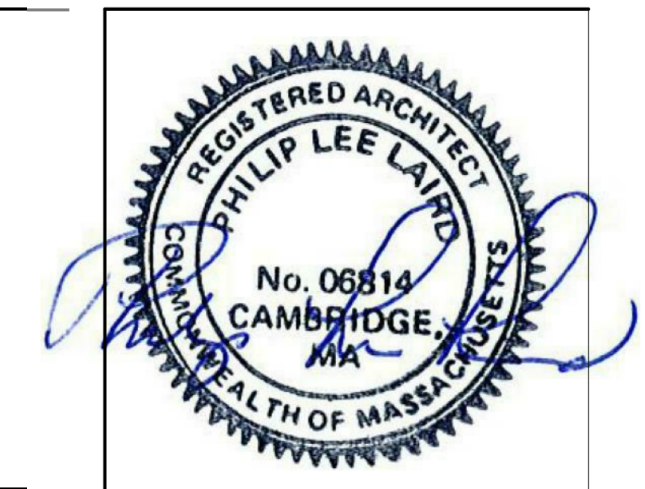
REFER TO ACOUSTICAL DRAWINGS FOR EXTERIOR GLAZING AND DOOR REQUIREMENTS.



2 SOUTH  
1/8" = 1'-0"



1 WEST  
1/8" = 1'-0"



NO.	REVISION	DATE

SITE PLAN SPECIAL PERMIT SUBMISSION  
SCALE: 1/8" = 1'-0"  
JOB NO: 2010 - 01  
DATE: 05/16/2022  
DRAWN BY: Author  
FILE NAME: 041000 Elevations

**ELEVATION / SECTION WALL TYPE LEGEND**

**WALL TYPE 1: BRICK WALL ASSEMBLY**

- FINISH: 3 5/8" BRICK VENEER WITH ANCHORS RUNNING BOND( SEE ELEVATION SOLDIER ORIENTATION COURSES **TYPE 1A**)
- 2 1/2" AIR CAVITY
- 3" STONE WOOL EXTERIOR WALL INSULATION
- CONT. FULLY APPLIED AIR/VAPOR BARRIER
- 5/8" EXTERIOR GYPSUM SHEATHING
- CMU
- 2 1/2" METAL STUD
- (2) LAYERS 5/8" INTERIOR GYPSUM SHEATHING
- INTERIOR FINISH AS SCHEDULED

**WALL TYPE 2: GFRC RAINSCREEN SYSTEM (BASIS OF DESIGN)**

- GFRC RAINSCREEN PANELS
- 1 -1/2" NON-FERROUS BLACK-PAINTED CHANNEL ON INTERMITTENT ST. STL. CLIP & BOLT SUPPORT SYSTEM. PTD GALV. STEEL Z-GIRT ON PLASTIC SHIM, SEALED ALONG TOP EDGE
- 4" RIGID MINERAL WOOL INSULATION (R-26)
- CONTINUOUS FULLY APPLIED AIR/ VAPOR BARRIER MEMBRANE
- 5/8" EXTERIOR GYPSUM SHEATHING
- CMU
- 2 1/2" METAL STUD
- (2) LAYERS 5/8" INTERIOR GYPSUM SHEATHING
- INTERIOR FINISH AS SCHEDULED

**WALL TYPE 2: TERRA COTTA RAINSCREEN SYSTEM (ALTERNATE 1)**

- 40MM / 1 1/2" TERRA COTTA PANEL ASSEMBLY ON S.S. CLIPS (SEE ELEVATION FOR TERRA COTTA TYPE. **TYPE 2A:** 6" 0" X 2'-8" **TYPE 2B:** 6" X0'-8")
- 1 -1/2" NON-FERROUS BLACK-PAINTED CHANNEL ON INTERMITTENT ST. STL. CLIP & BOLT SUPPORT SYSTEM. PTD GALV. STEEL Z-GIRT ON PLASTIC SHIM, SEALED ALONG TOP EDGE
- 4" RIGID MINERAL WOOL INSULATION (R-26)
- CONTINUOUS FULLY APPLIED AIR/ VAPOR BARRIER MEMBRANE
- 5/8" EXTERIOR GYPSUM SHEATHING
- CMU
- 2 1/2" METAL STUD
- (2) LAYERS 5/8" INTERIOR GYPSUM SHEATHING
- INTERIOR FINISH AS SCHEDULED

**WALL TYPE 3: METAL-FACED COMPOSITE WALL PANELS**

- METAL-FACED COMPOSITE WALL PANELS
- 1 -1/2" NON-FERROUS BLACK-PAINTED CHANNEL ON INTERMITTENT ST. STL. CLIP & BOLT SUPPORT SYSTEM. PTD GALV. STEEL Z-GIRT ON PLASTIC SHIM, SEALED ALONG TOP EDGE
- 4" RIGID MINERAL WOOL INSULATION (R-26)
- CONTINUOUS AIR/ VAPOR BARRIER MEMBRANE
- 5/8" EXTERIOR GYPSUM SHEATHING
- CMU
- 2 1/2" METAL STUD
- (2) LAYERS 5/8" INTERIOR GYPSUM SHEATHING
- INTERIOR FINISH AS SCHEDULED

**WALL TYPE 4: CURTAIN WALL**

- KAWNEER 1600 UT (BASIS OF DESIGN)
- 3 COATS KYNAR METALLIC FINISH
- SOLARBAN 72 ACUITY #2 FOR LARGE SPANS GLAZING (IGU + FRITTED GLASS) -GL1
- INSULATING - SHADOW BOX GLASS- FRITTED GLASS (SEE ELEVATION TYPE 4A)
- GLASS ALTERNATE GUARDIAN SN68 ULTRA CLEAR IGU- FRITTED GLASS

**WALL TYPE 5 : GRANITE BASE**

- FINISH: 2" CAMBRIAN BLACK FLAMED GRANITE CLADDING WITH ANCHORS (BASIS OF DESIGN)
- 2" POMPEI BASALT STONE CLADDING WITH ANCHORS (ALTERNATE 1)
- 2 1/2" AIR CAVITY
- 4" RIGID POLYISO INSULATION
- CONT. AIR/VAPOR BARRIER
- 5/8" EXTERIOR GYPSUM SHEATHING
- CMU/MISC. STL SUPPORT/ CONCRETE FOUNDATION WALL

**WINDOW TYPE W1:**

- KAWNEER 1600 UT (BASIS OF DESIGN)
- 3 COATS KYNAR METALLIC FINISH
- SOLARBAN 72 ACUITY (IGU + FRITTED GLASS) -GL2
- INSULATING - SHADOW BOX GLASS- FRITTED GLASS (SEE ELEVATION TYPE 4A)
- GLASS ALTERNATE GUARDIAN SN68 ULTRA CLEAR IGU - FRITTED GLASS
- CUSTOM PROFILE EXTENDED LEG MULLION CAP AROUND THE FRAME PERIMETER. MITER AT CORNER. TYP. TO PROJECT 6" +/- OF MASONRY FACE TYP.

**SUNSCREEN TYPE S1: ALUMINUM SUN SCREEN**

- PERFORATED ALUMINUM SUN SCREEN - COLOR TO MATCH CURTAIN WALL

**PERIMETER FOOTING ASSEMBLY TYPE F1:**

- DRAINAGE BOARD
- 2" RIGID INSULATION
- WATERPROOFING MEMBRANE
- CONCRETE FOUNDATION WALL AND FOOTING, REF. STRUCTURAL

**PARAPET TYP.**

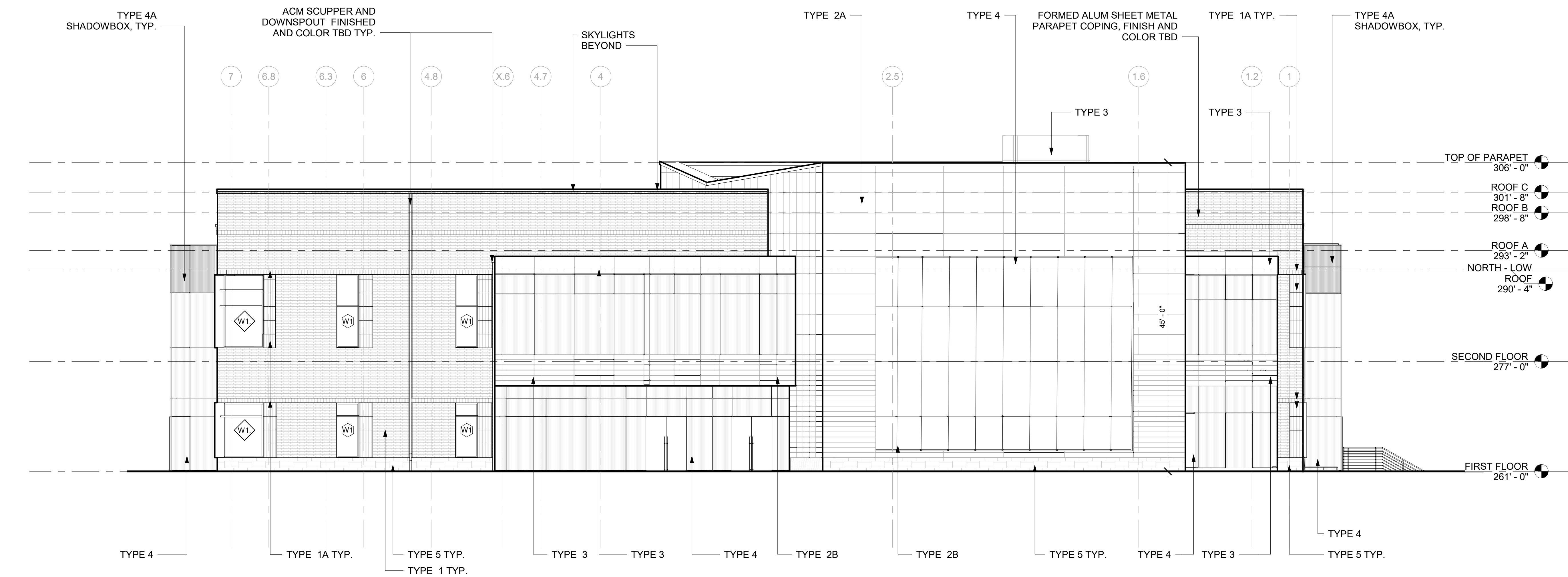
- ACM PARAPET COPING, FINISH AND COLOR TBD
- P.T. WOOD BLOCKING
- FULLY ADHERED PVC ROOFING MEMBRANE, LAP UP AND OVER PARAPET CONSTRUCTION
- METAL FRAMING
- VAPOR RETARDER
- EXTERIOR GYPSUM BOARD

**GFRC RAINSCREEN SYSTEM SOFFIT SYSTEM TYPE -JP**

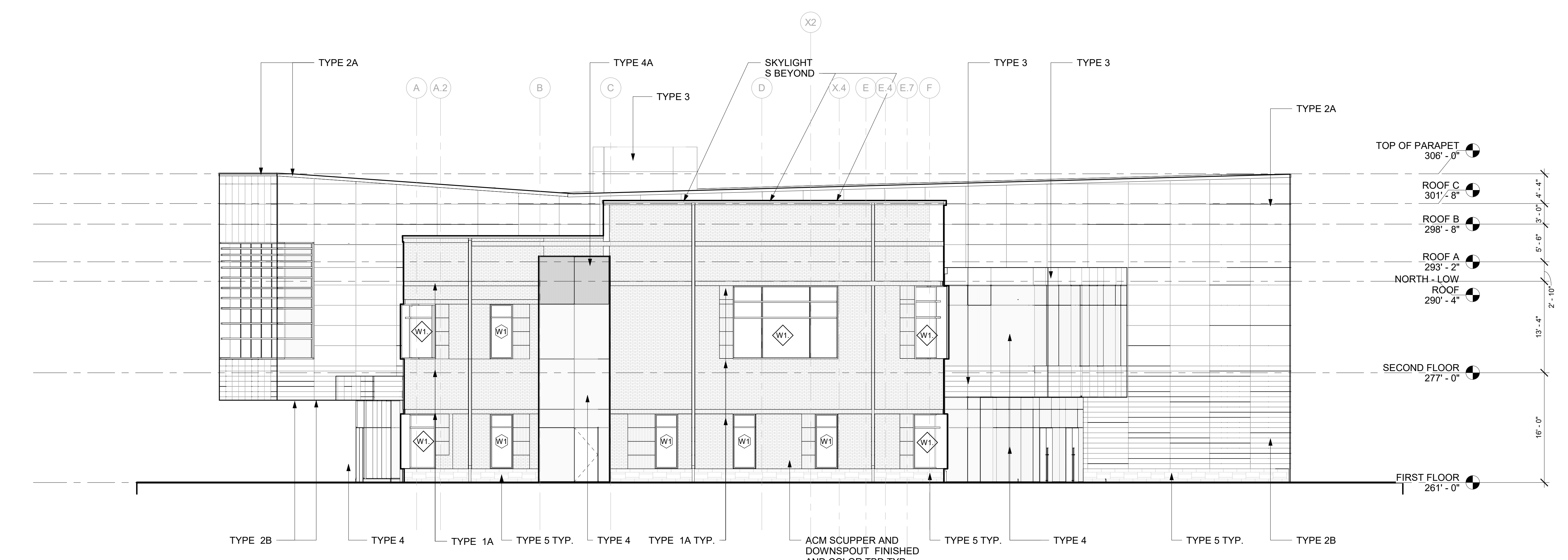
- GFRC RAINSCREEN PANELS SOFFIT
- 1 -1/2" NON-FERROUS BLACK-PAINTED CHANNEL ON INTERMITTENT ST. STL. CLIP & BOLT SUPPORT SYSTEM. PTD GALV. STEEL Z-GIRT ON PLASTIC SHIM, SEALED ALONG TOP EDGE
- 4" RIGID POLYISO INSULATION (R-26)
- CONTINUOUS AIR/ VAPOR BARRIER MEMBRANE
- METAL FRAMING

**NOTE:**

REFER TO ACOUSTICAL DRAWINGS FOR EXTERIOR GLAZING AND DOOR REQUIREMENTS.



2 NORTH  
1/8" = 1'-0"



1 EAST  
1/8" = 1'-0"

