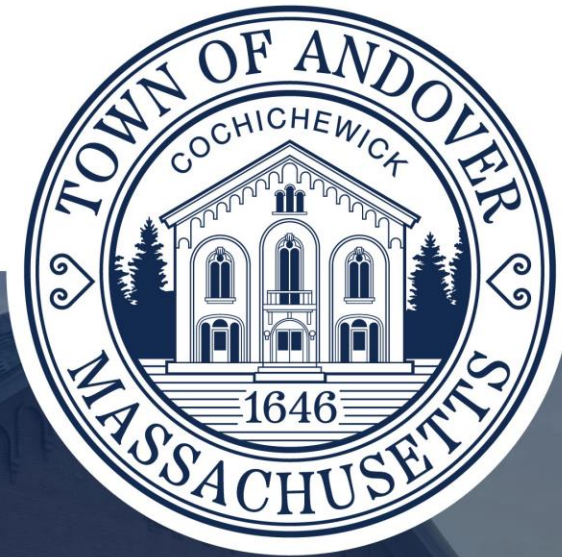


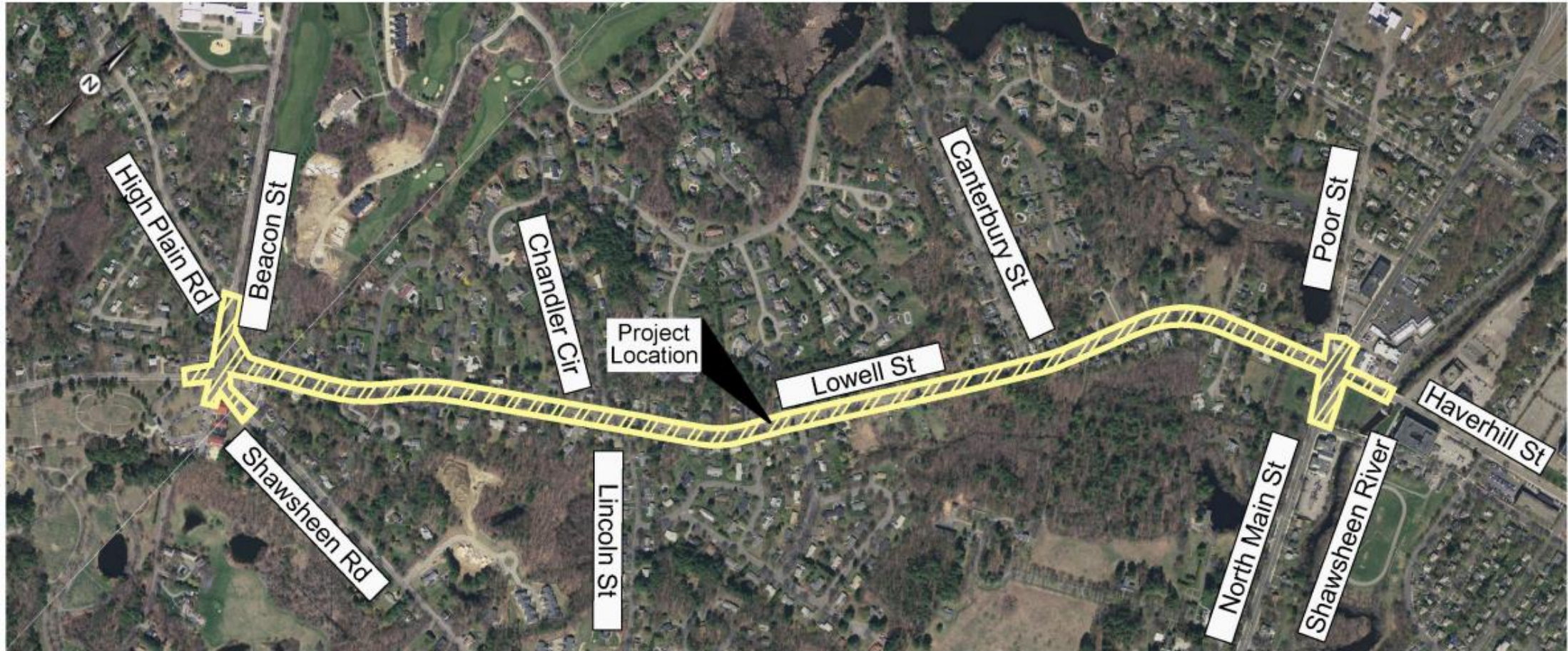
Route 133 Corridor Project



January 27, 2026

ANDOVERMA.GOV

Project Area



- Project Limits:** Approximately 1.25 miles, from West Parish to Shawsheen Village.
- Key Intersections:** Upgrades at Beacon Street/Shawsheen Road and Main Street (Route 28).

Project Need & Resident Concerns

- Intersection traffic operations
- Intersection safety/ alignment
- Vehicle speeds
- Insufficient pedestrian accommodations
- Lack of bicycle accommodations
- Aging Infrastructure (Drainage/Pavement/Signals)
- Pedestrian safety



Project Goals

- Improve traffic operations
- Expand pedestrian accessibility
- Enhance safety for all users & calm traffic
- Preserve character & aesthetics
- Introduce bicycle accommodations
- Modernize aging infrastructure (stormwater, pavement, signals)
- Preserve access to businesses & maintain village parking



25% Design Public Hearing Recap

- Hybrid hearing held September 18, 2024 (in-person & Zoom)
- Over 30 residents attended (also televised on Andover TV)
- Strong support for preferred alternative
- 12 public comments received & responded to by MassDOT
- WalkBike Andover group supportive of project & offered detailed design review comments
- Over 50 people have since viewed the recording available at:

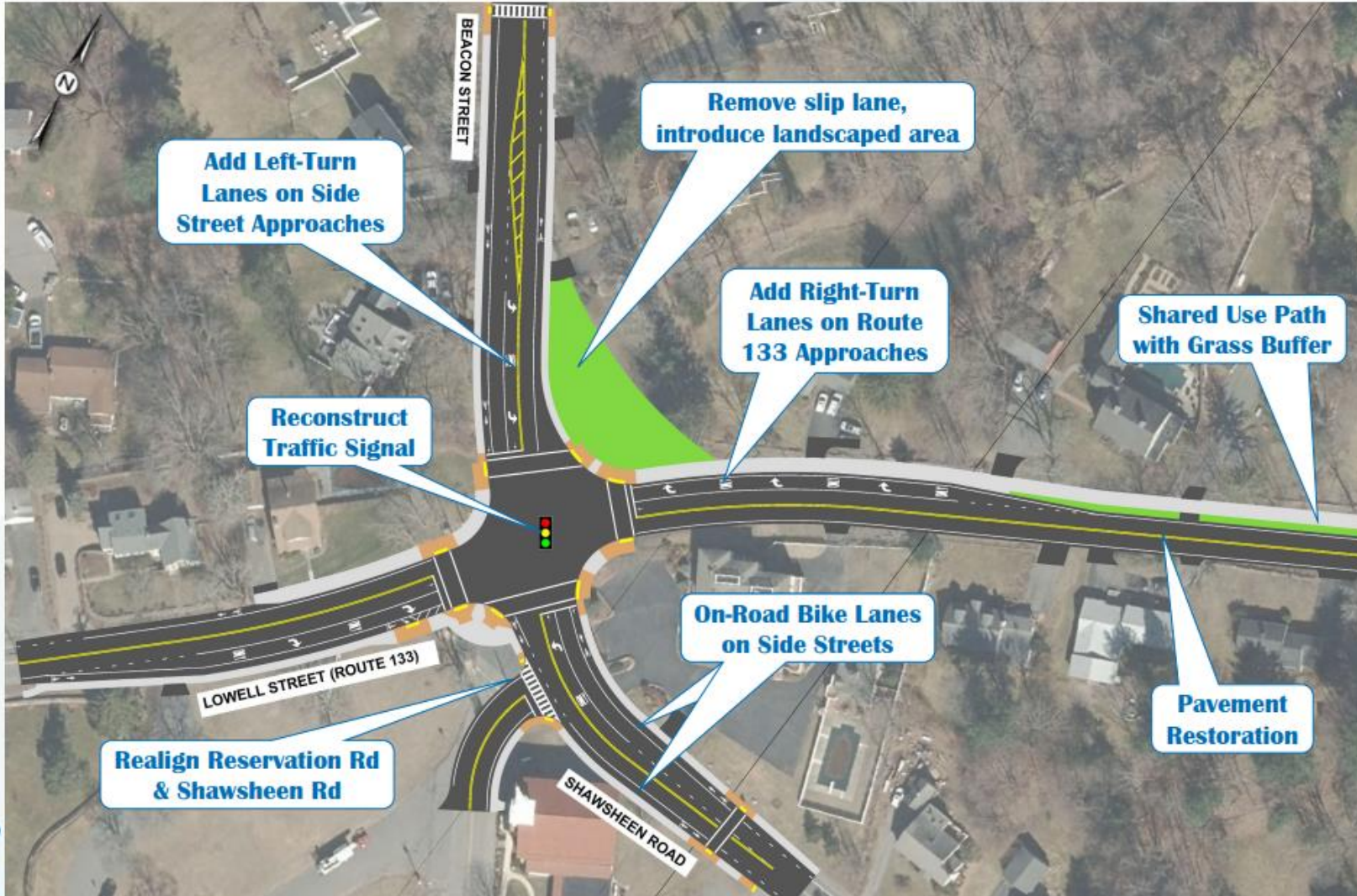


Preferred Alternative

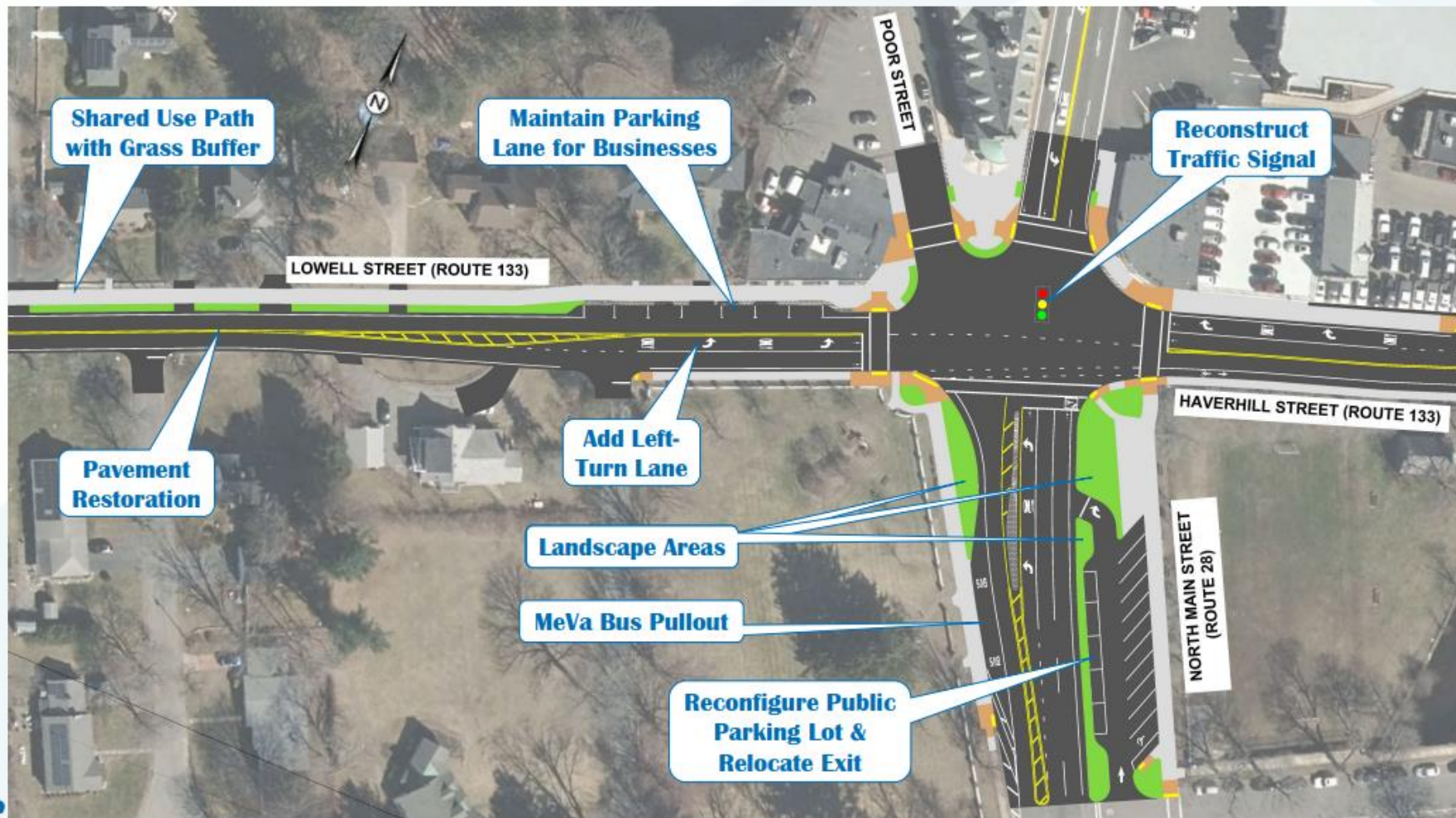
- Shared-use path along north side of roadway
- Improve pedestrian accessibility & add bicycle accommodations
- Fully reconstruct traffic signals at Route 133 / Route 28 and Route 133 / Beacon / Shawsheen
- Modernize roadway infrastructure including drainage, pavement, striping, and signage



Route 133/Beacon Street/ Shawsheen Rd



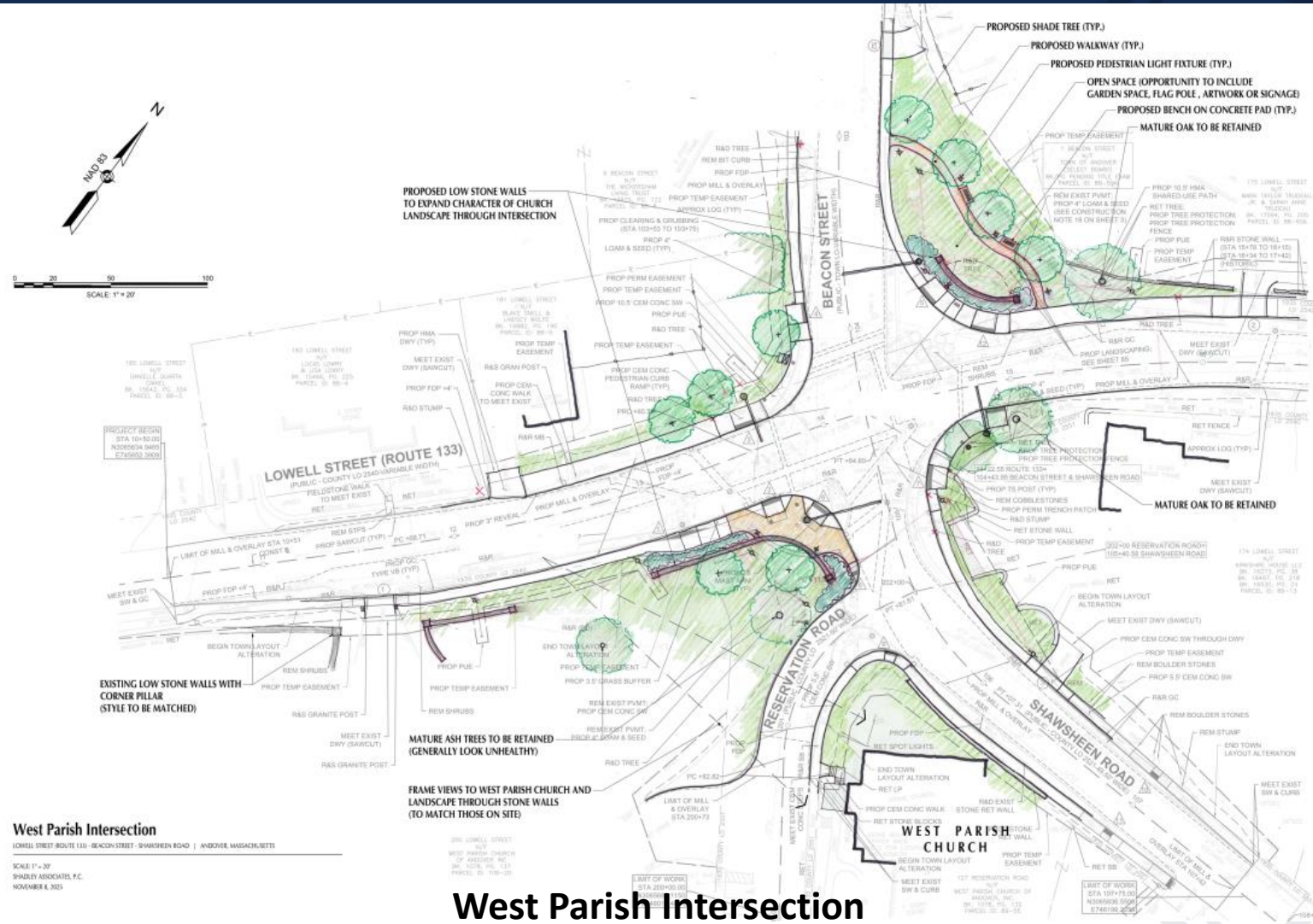
Route 133/Route 28/Shawsheen



Route 133 Corridor Public Enhancements Working Group

- Explore potential investments in streetscape enhancements, including but not limited to landscaping, lighting and street furniture
- Consult with other professionals to obtain expert guidance as needed
- Facilitate community outreach and engagement activities
- Review and provide feedback on design proposals and plans and facilitate a consensus
- Prepare and present periodic updates to the Select Board and other relevant Town stakeholders

Rt 133 Corridor – Initial Public Enhancements Concepts



West Parish Intersection

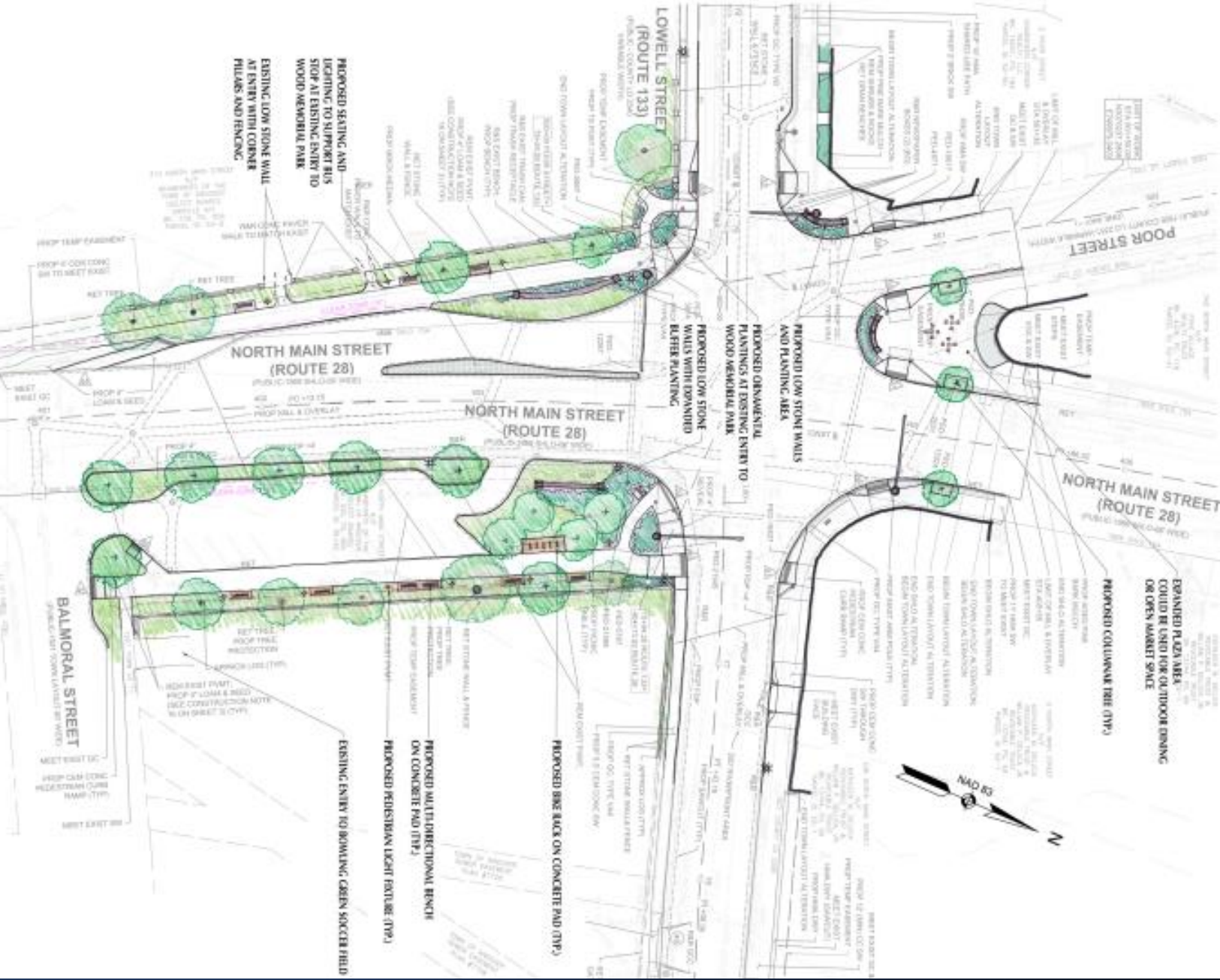
- New Open Space
- Proposed Walkway
- New Trees
- Preservation Of Mature Trees
- Ornamental Plannings
- Low Stone Walls w/ Planting Areas
- Frame Views to West Parish Church
- Pedestrian Light Fixtures

Shawsheen Square



Shawsheen Village Intersection

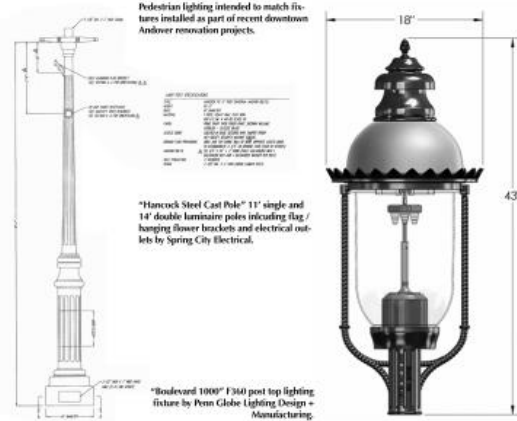
- Expanded Plaza
- New Trees
- Ornamental Plannings
- Low Stone Walls w/ Planting Areas
- Pedestrian Light Fixtures
- Street Furniture
- Bicycle Accommodations



Landscape Precedent Images



Pedestrian Lighting



Colo. blue, Princeton Snow, Colugo



Austrian Red Green, Red Screen Red Maple



Charles M. Young, Naylor, Before Homebase



Liquidambar styraciflua 'Nimbus', Redwing



Platanus australis 'Woodgolf', Woodgolf London Platanus



USA American American Linden



USA American American Elm (Swainson & hybrid)



Spring Hill, Very Elm, Very Elm, Very Elm, Very Elm

Street Tree Options



BENCH Dabbs Bench 28



TRASH RECEPTACLE Landscape Forms Dux

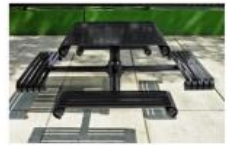


TABLE Dabbs Steel Pedestal Table 44



BICYCLE PARKING POST Dabbs Bike Rack 63 in. Planer



INTERPRETIVE PANEL

Site Furnishings



WOOD MEMORIAL PARK STONE WALL, PILLARS AND FENCING



WEST PARISH CHURCH STONE WALL AND PILLAR

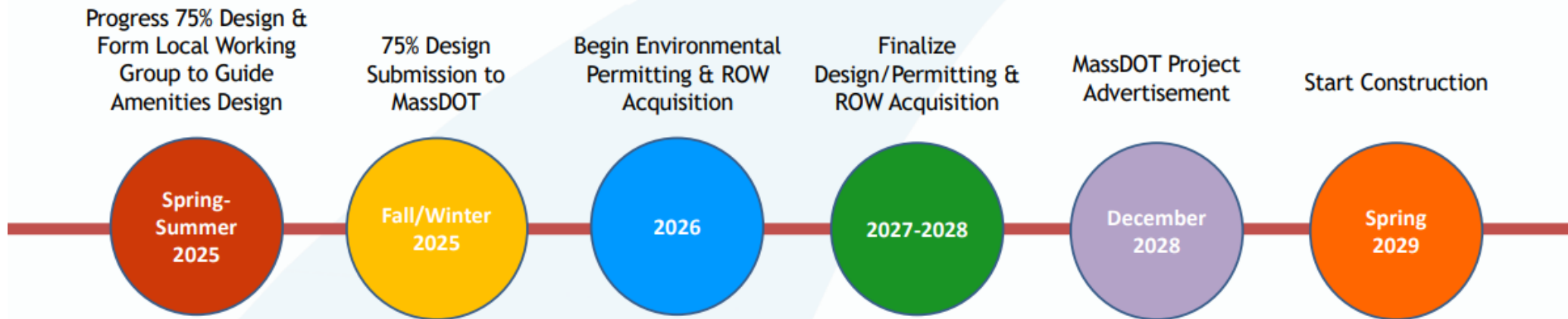
Stone Walls

Landscape Precedent Images

WEST PARISH AND SHAWSHEN VILLAGE INTERSECTIONS | ANDOVER, MASSACHUSETTS

SHADLEY ASSOCIATES, P.C.
NOVEMBER 8, 2025

Next Steps



Project updates will be posted on the Town's project website at <https://andoverma.gov/877/Route-133-Corridor> or use the QR Code:



Questions



(978) 623-8650
planning@andoverma.gov
andoverma.gov/planning

- Paul Materazzo, Director of Planning & Land Use
- Andrew Lewine, Chair Rt 133 Corridor Public Enhancements Working Group
- Clint Palemero, Vice Chair Rt 133 Corridor Public Enhancements Working Group